

# Role of Maps

- Targeting and Positioning for Inclusive Design
  - Global Targeting by Intrinsic Properties for Further Local Optimizations
    - DOS, Geometry, Potential, ...
  - Comparative Studies of Complex System
- Grouping of Extrinsic and Structure-Sensitive Properties for Knowledge Discovery
- Utilization for Digital Converging Procedures
- .....

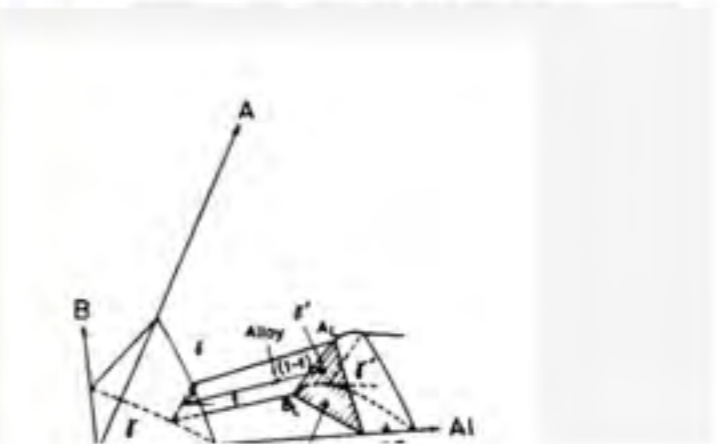
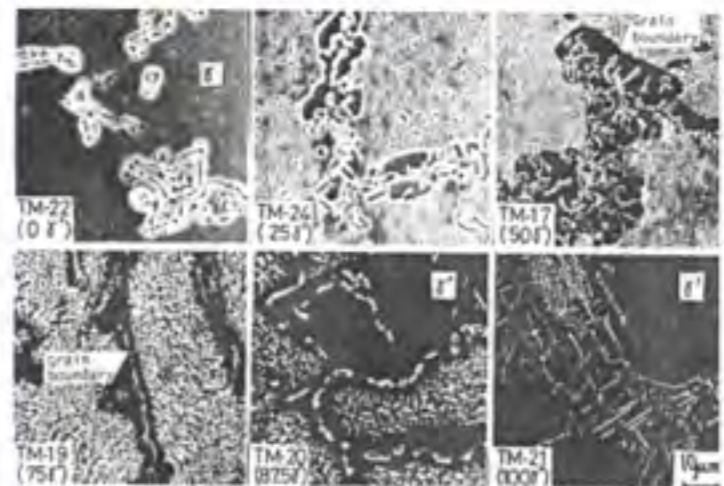
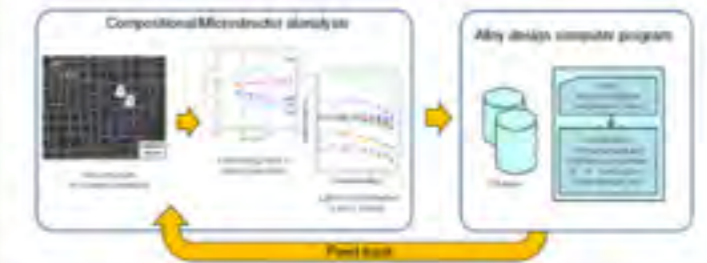
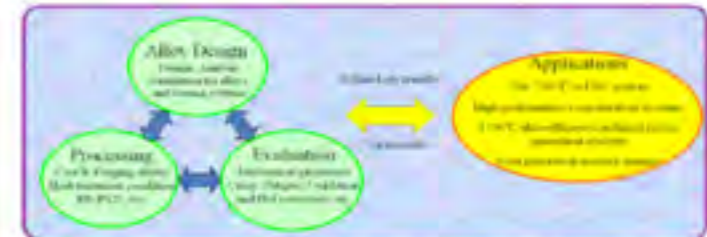
# Materials Design

- “Materials are made from atoms.” by Arthur Robert von Hippel
- Toward alloying theory-“Physical Properties and Interrelationships of Metallic and Semimetallic Elements by Karl A. Gschneidner, Solid State Physics Vol.16, pp.275-446.
- ...



**Phacomp and its evolutions** Example #329718

\*J.H.Westbrook et al.  
 \*M.Yamazaki->H.Harada->  
 \*N.Yukawa->Morinaga

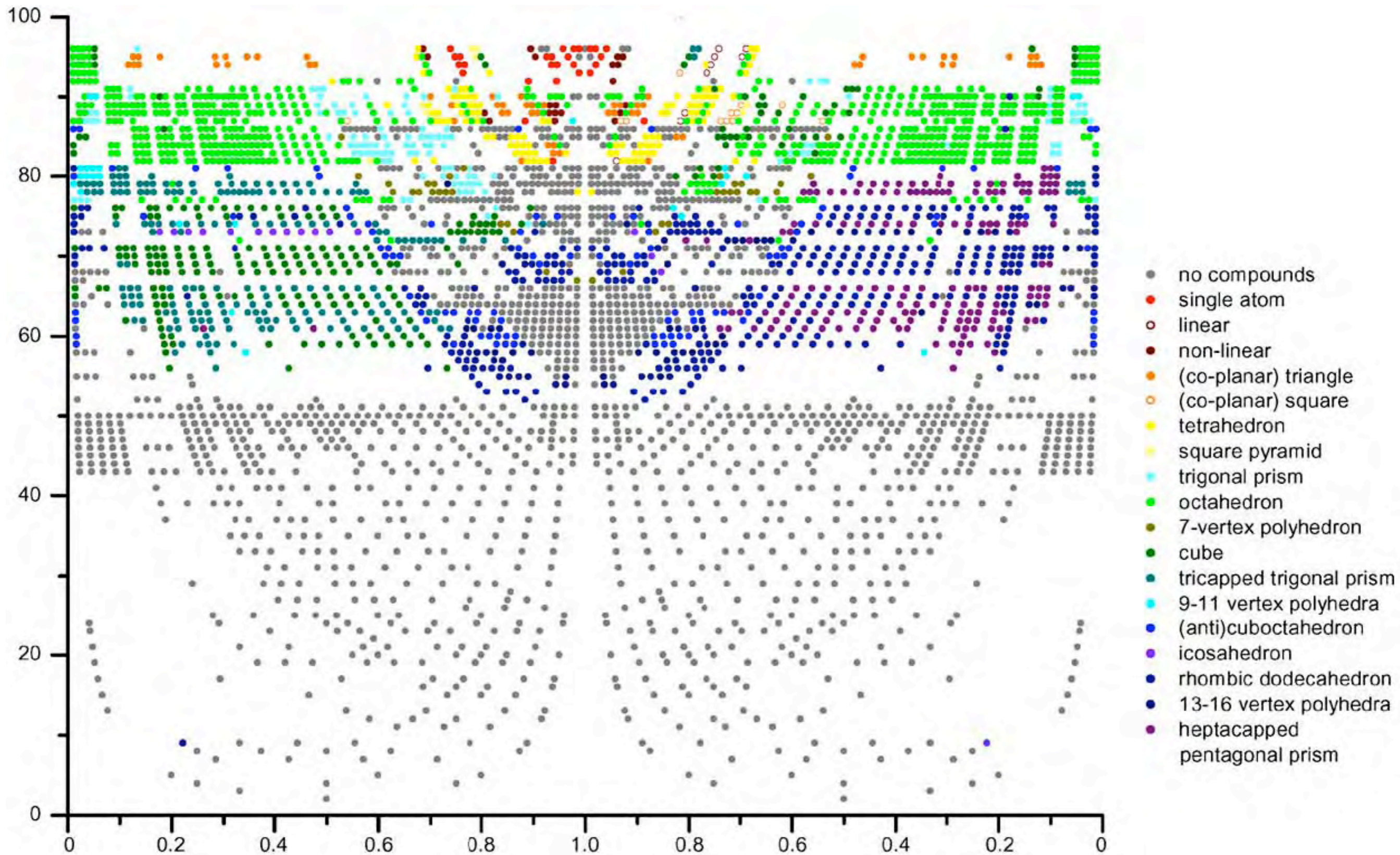


Edit Delete Bookmark

Rollovers Tabs

Add idea Comment Move Cross-link Cite New map



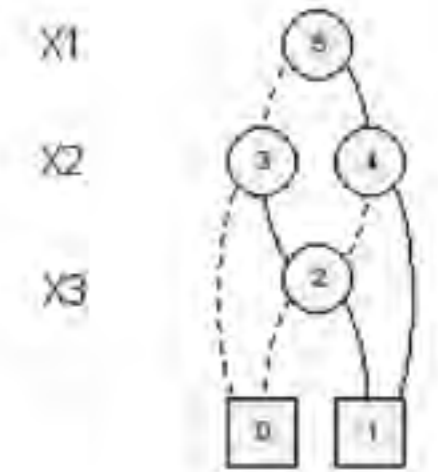
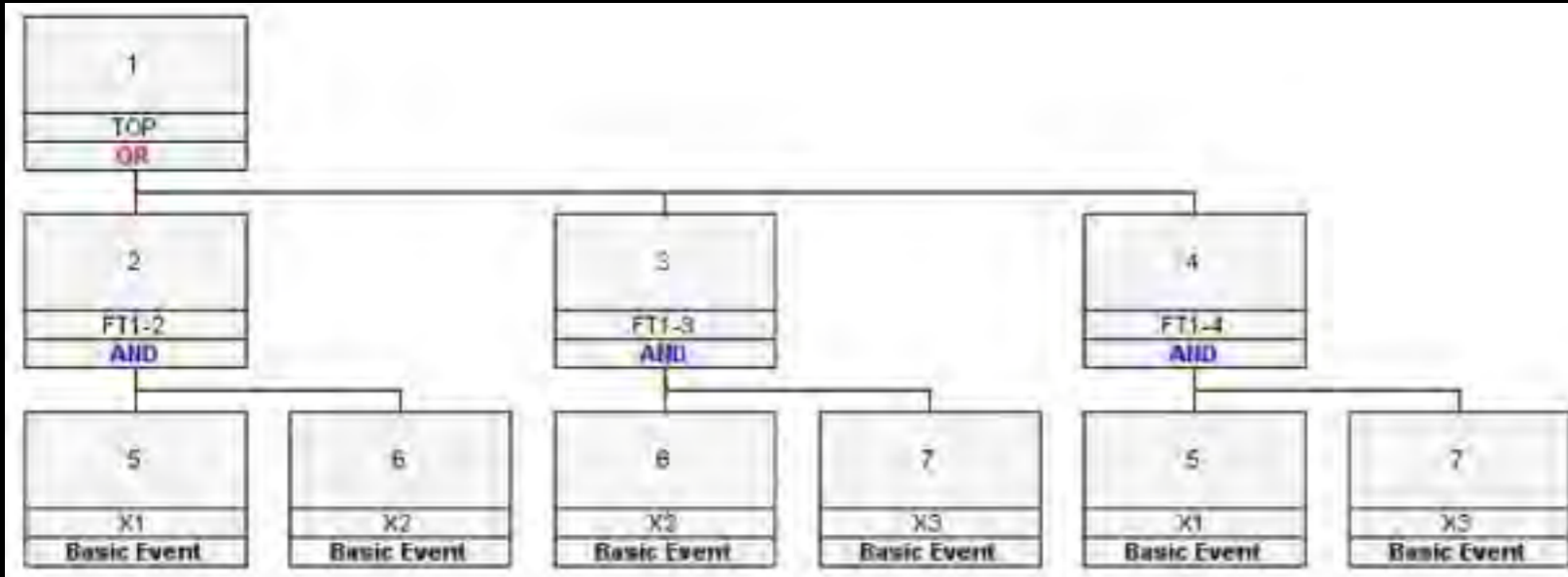
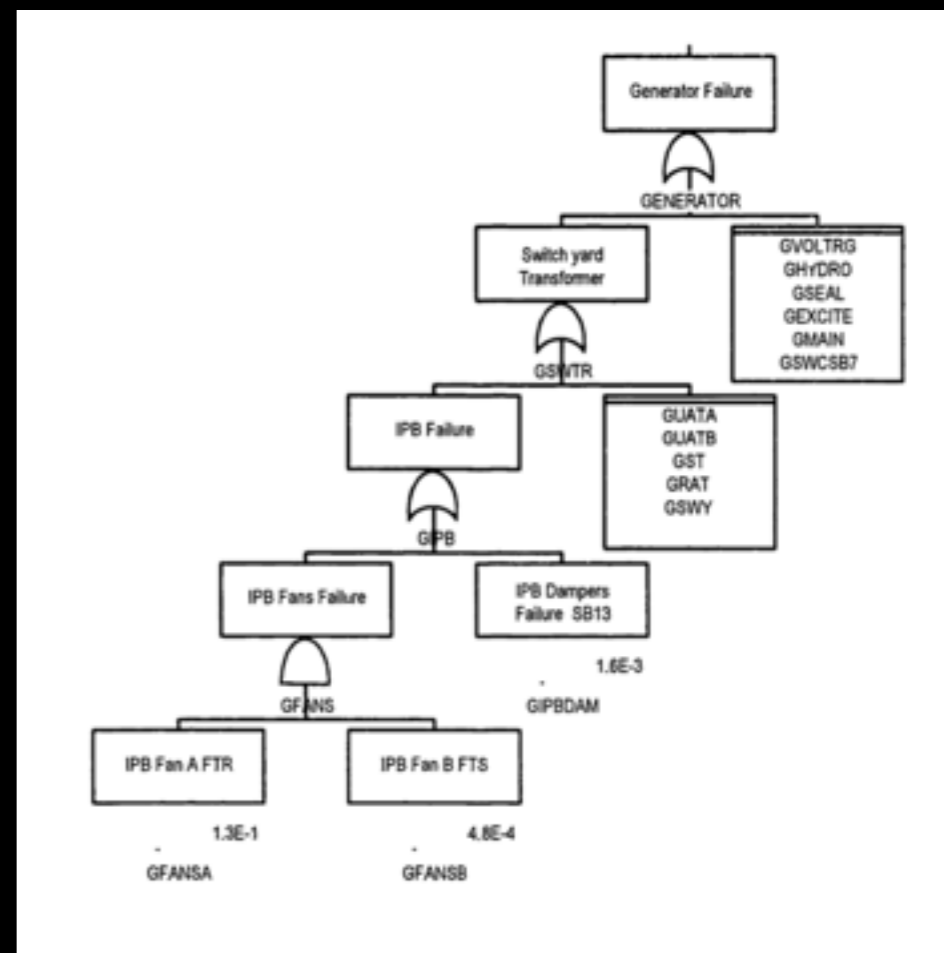
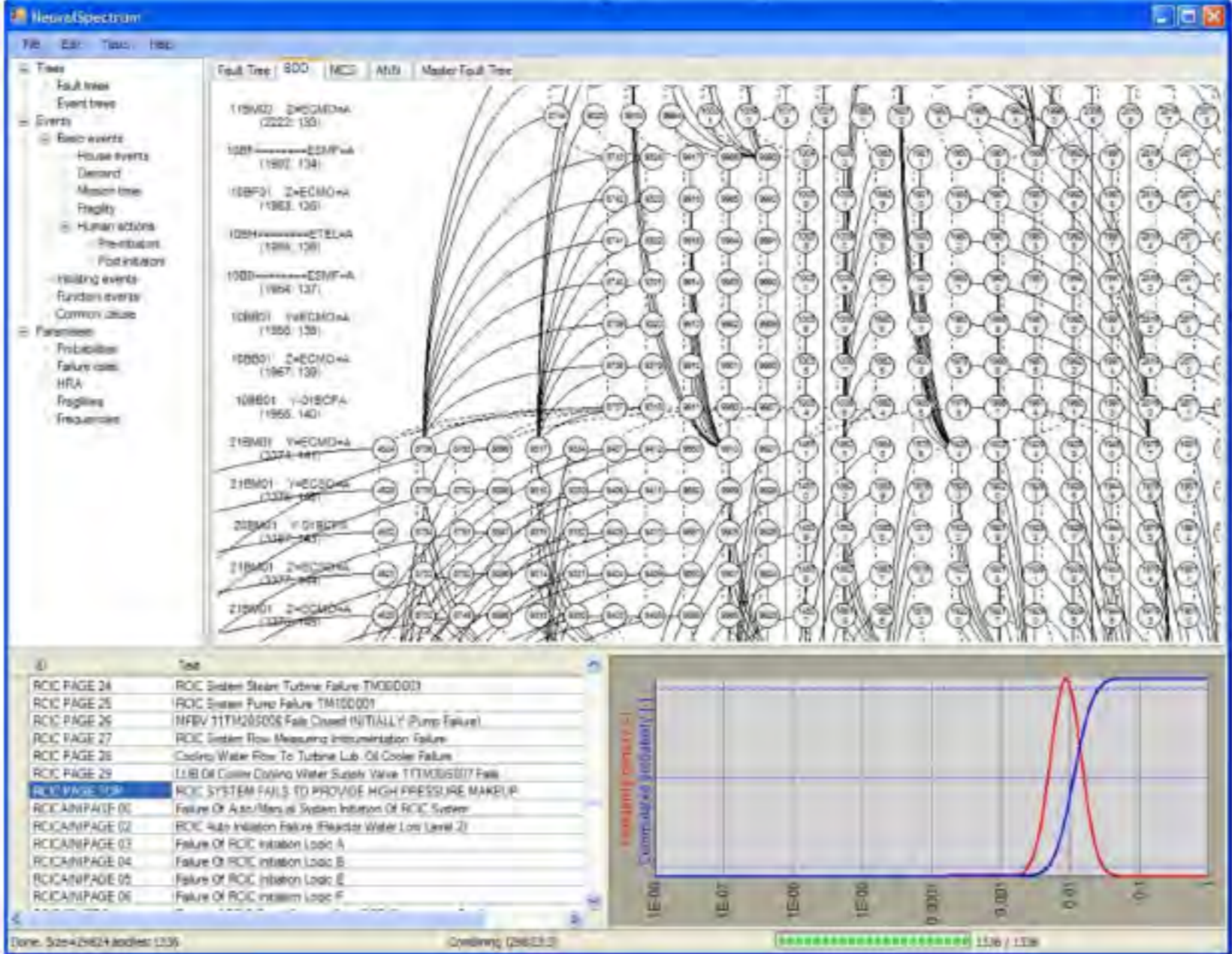


# User Innovation by Eric von Hippel

- Innovation by lead user : that end-users, rather than manufacturers, are responsible for a large amount of innovation
- Business strategy and free/open source software (FOSS)

Open Access, Open Data,  
Open Science







**CRITICAL INFRASTRUCTURE  
COMMUNITY**

*Partnership-based  
collective action*

**Vision**  
*Where we want to be*

**NATIONAL**

**Core Tenets**  
*Values and assumptions that guide planning and activities throughout cycles*

**Performance Measures**  
*How we will know we have accomplished our goals/priorities*

**Mission**  
*Who we are and why we are here*

**SECTOR,  
REGIONAL,  
SLTT**

**Priorities**  
*What we will do*

*NIPP 2013: Partnering for Critical Infrastructure Security and Resilience  
Call to Action and Activities  
(Multi-year)*

*Additional Priorities To Be Identified Through Partnership Priority-Setting and Joint Planning Processes*

**Goals**  
*What we want to accomplish*

**NIPP 2013  
ELEMENTS**