

# アカゲザルによるキメラ動物作出

## Generation of Chimeric Rhesus Monkeys

Masahito Tachibana,<sup>1</sup> Michelle Sparman,<sup>1</sup> Cathy Ramsey,<sup>1</sup> Hong Ma,<sup>1</sup> Hyo-Sang Lee,<sup>1</sup> Maria Cecilia T. Pene and Shoukhrat Mitalipov<sup>1,2,\*</sup>

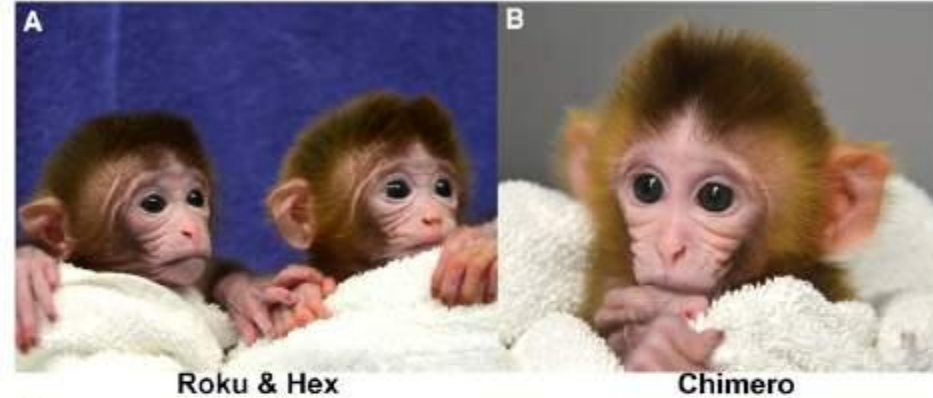
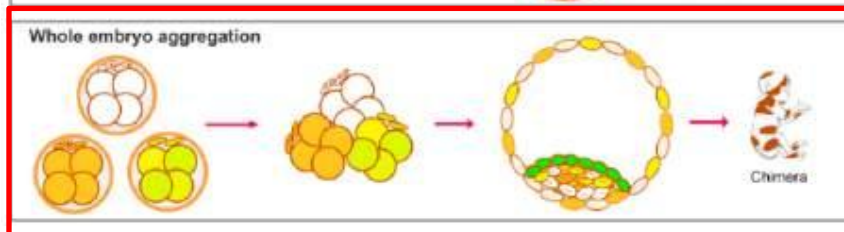
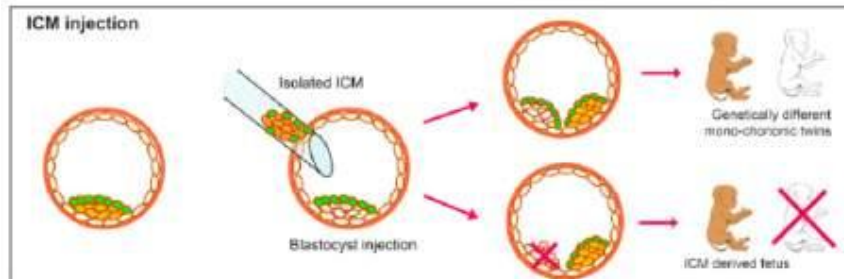
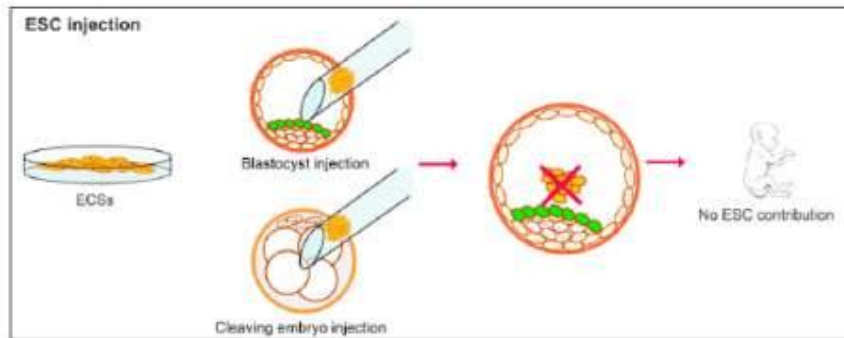
<sup>1</sup>Oregon National Primate Research Center

<sup>2</sup>Oregon Stem Cell Center and Departments of Obstetrics & Gynecology and Molecular & Medical Genetics

Oregon Health & Science University, 505 N.W. 185<sup>th</sup> Avenue, Beaverton, OR 97006, USA

<sup>3</sup>Veterinary Genetics Laboratory, University of California, Davis, CA 95616-8744, USA

\*Correspondence: mitalipo@ohsu.edu



**C**

Animal	DNA origin	AME	D22S685	162B17B
Sperm donor male #6	blood	XY	315/327	295/309
Egg donor Female #15	blood	XX	311/319	309/317
Egg donor Female #16	blood	XX	287/359	289/315
Recipient #25	blood	XX	323/331	293/308

EA-f8 (ROKU)	cord blood	XY	287/315	289/295/309/315
EA-f8 (ROKU)	cord	XY	287/315	289/295/309/315
EA-f8 (ROKU)	Membrane	XY	287/315/323/331	289/293/295/309
EA-f8 (ROKU)	Placental body	XY	287/315/323/331	289/295/309/315
EA-f9 (HEX)	cord blood	XY	287/327	309/315
EA-f9 (HEX)	cord	XY	287/319/327	309/315/317
EA-f8 (HEX)	Membrane	XY	287/319/323/327/331	293/309/315/317
EA-f8 (HEX)	Placental body	XY	287/311/315/319/327	309/315

**D**

Animal	DNA origin	AME	D7S513	D9S921
Sperm donor Male #1	blood	XY	197/201	167/199
Egg donor Female #17	blood	XX	189/205	179/195
Egg donor Female #18	blood	XX	191/235	187/195
Recipient #27	blood	XX	199/215	195/207

EA-f10 (CHIMERO)	cord blood	XY	191/197/201/235	167/187/195/199
EA-f10 (CHIMERO)	cord	XY	191/197/201/235	167/187/195/199
EA-f10 (CHIMERO)	Membrane	XY	191/197/201/235	167/187/195/199
EA-f10 (CHIMERO)	Placental body	XY	191/199/201/215/235	195/199/207