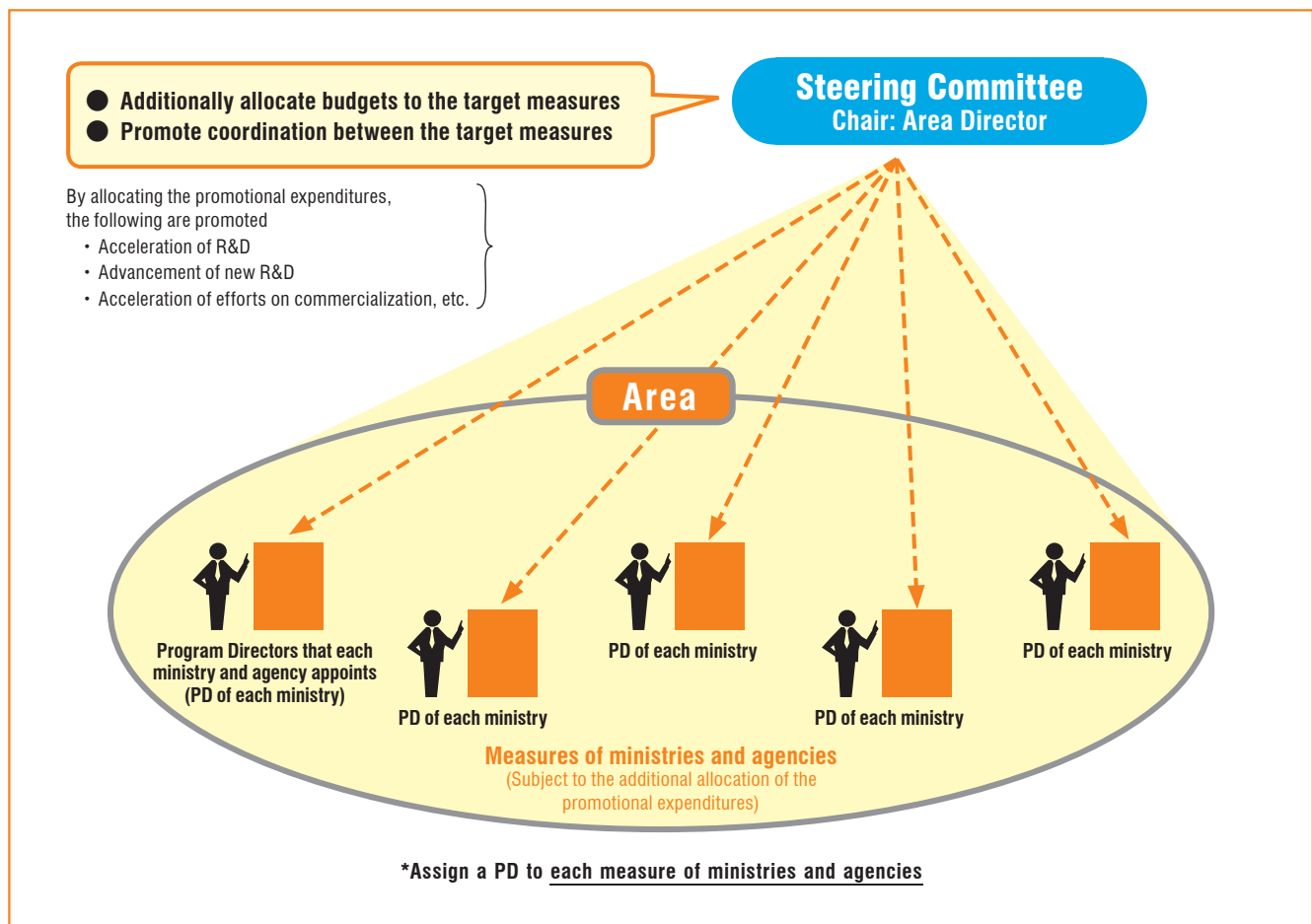
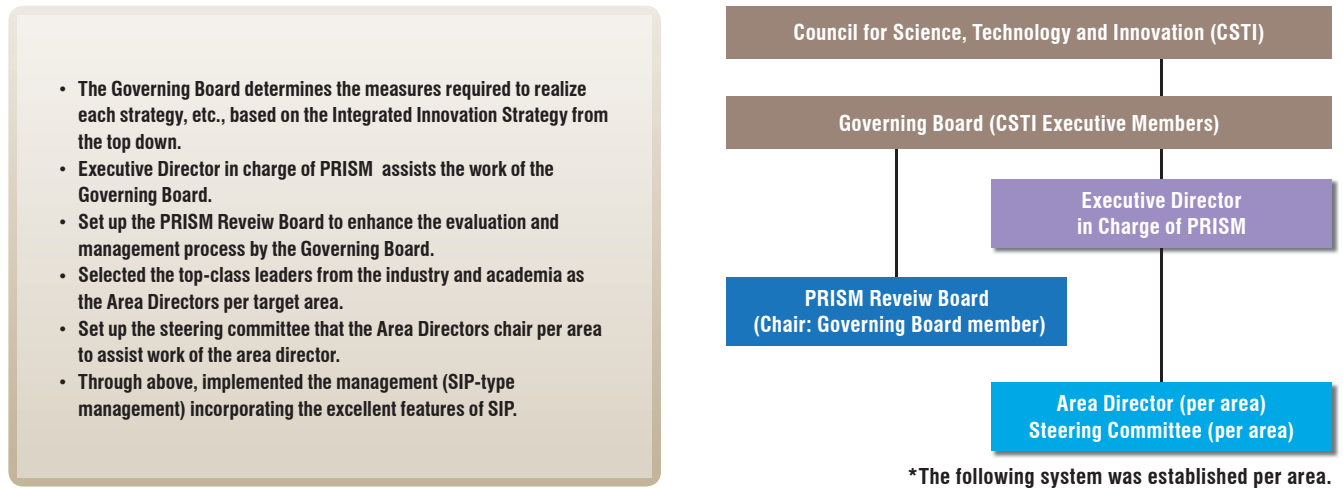


Overview of the PRISM R&D model

Implementation system of the R&D model

The structure where the Governing Board sets up the target areas and promotes R&D under the area directors so that CSTI promotes important measures that are required to realize each strategy and it should implement as the headquarters. Also, the PRISM Screening Board was set up under the Governing Board in 2019 and efforts have been made to enhance the evaluation and management process.



Overview of the PRISM R&D model

What is the Governing Board?

Stipulated the establishment of the Governing Board consisting of CSTI executive members under the CSTI in “the Basic Policy for the Expenditure on Science, Technology and Innovation Promotion” (the Council for Science, Technology and Innovation (CSTI) held in May 23, 2014).

Promote SIP and PRISM integrally and flexibly through the Governing Board.



Members of the Public/Private R&D Investment Strategic Expansion Program (PRISM)

as of April 1, 2021

[Governing Board Chair]



HASHIMOTO Kazuhito

President, National Institute for Materials Science
Executive Member, Council for Science, Technology and Innovation,
Cabinet Office

[Members]



UEYAMA Takahiro

Former Vice President, National Graduate Institute for Policy Studies
Full-time Executive Member, Council for Science, Technology and Innovation,
Cabinet Office



KOTANI Motoko

Executive Vice President for Research, Tohoku University
Director, Advanced Institute for Materials Research
Professor, Mathematical Science Group
Executive Member, Council for Science, Technology and Innovation, Cabinet Office



SHINOHARA Hiromichi

Chairman of the Board of NIPPON TELEGRAPH AND TELEPHONE CORPORATION (NTT)
Vice Chairs and Chair of the Committee on Digital Economy,
Japan Business Federation (Keidanren)
Executive Member, Council for Science, Technology and Innovation, Cabinet Office



KAJITA Takaaki

President, Science Council of Japan
[Head of relevant administrative organization]
Executive Member, Council for Science, Technology and Innovation,
Cabinet Office



KAJIWARA Yumiko

Corporate Executive Officer, Fujitsu Ltd.
Executive Member, Council for Science, Technology and Innovation,
Cabinet Office



SATO Yasuhiro

Chairman, Mizuho Financial Group, Inc.
Vice Chairs, Japan Business Federation (Keidanren)
Executive Member, Council for Science, Technology and Innovation, Cabinet Office



FUJII Teruo

President, University of Tokyo
Executive Member, Council for Science, Technology and Innovation, Cabinet Office

[Executive Director in charge of PRISM]



SUDO Akira

Fellow, Toshiba Corporation
Policy Advisor of Cabinet Office, Executive Director in Charge of PRISM