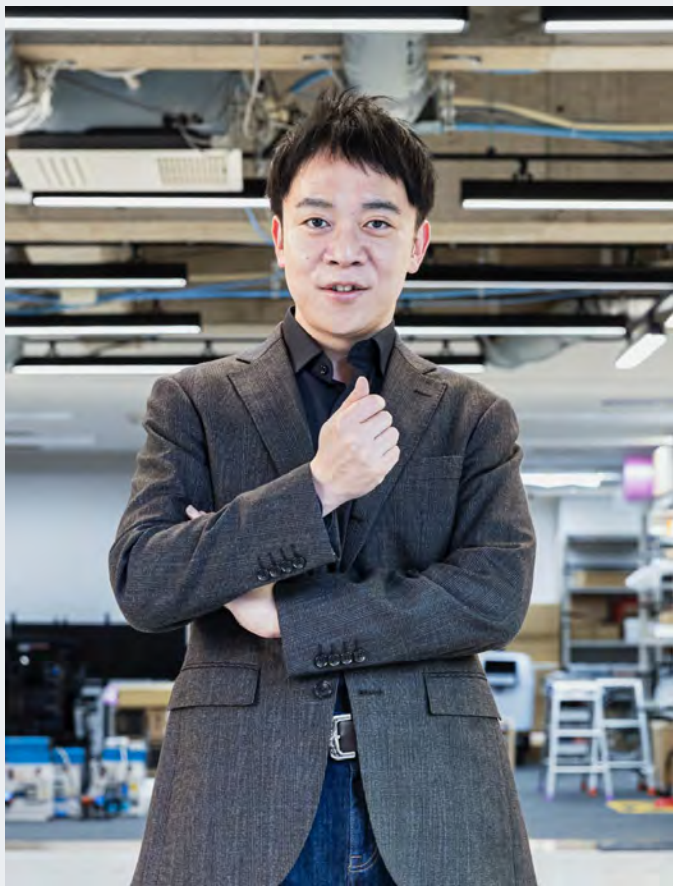


# オープンソースが切り開く 自動運転の未来

加藤真平

株式会社ティアフォー CEO/CTO  
東京大学 特任准教授





## Shinpei Kato

An internationally renowned expert in computer science, and a pioneer in the evolution of open-source software for autonomous driving technology.

**2023 - Present.** CEO of TIER IV; Specially Appointed Professor, The University of Tokyo.

**2018 - Present.** Chairman of The Autoware Foundation.

**2016 - 2023.** Full-Time Associate Professor in Computer Science, The University of Tokyo.

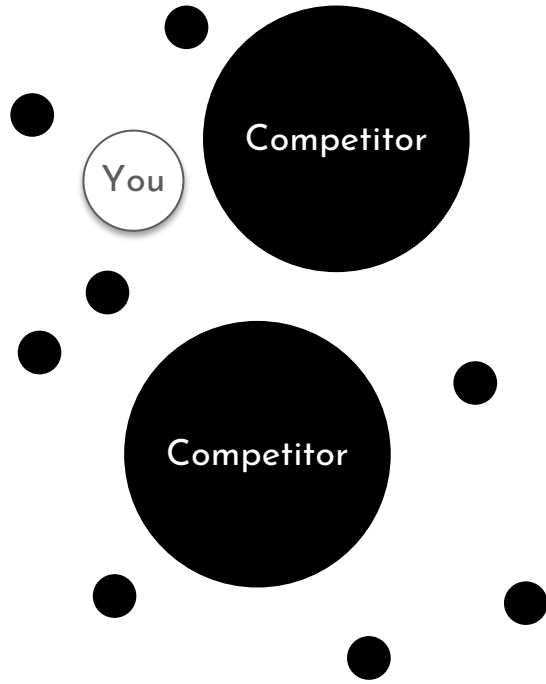
**2012 - 2016.** Full-Time Associate Professor in Information Science, Nagoya University.

**2009 - 2012.** Postdoc Researcher, Carnegie Mellon University & University of California, Santa Cruz.

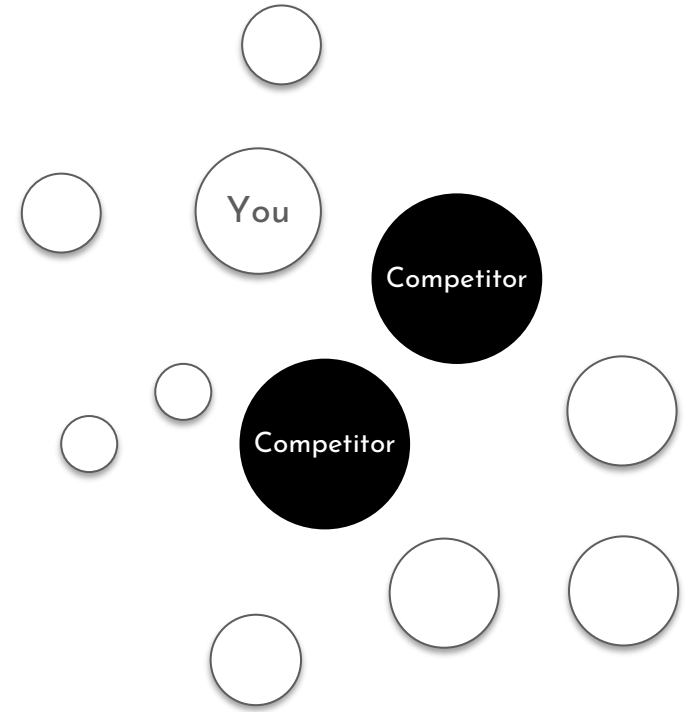
**2008.** Received Ph.D. in Engineering, Keio University.

**1982.** Born.

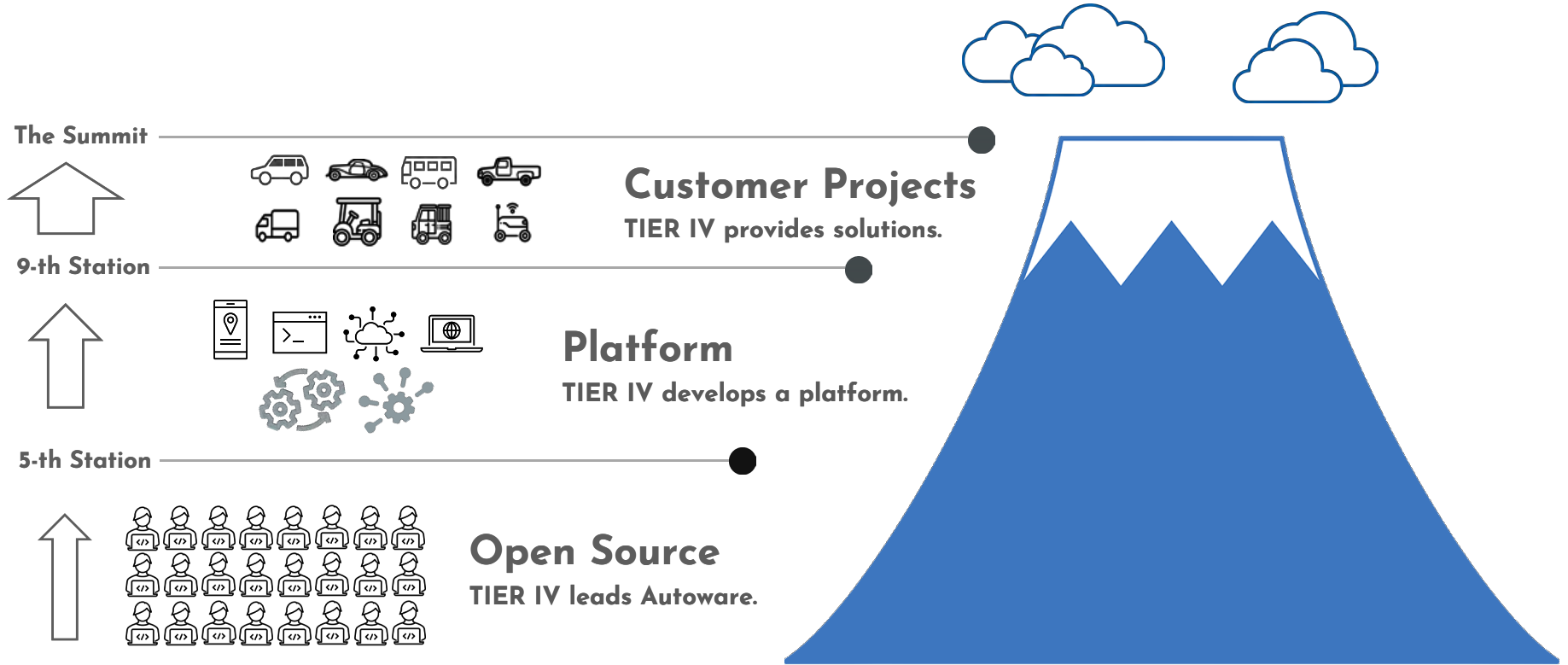
# Ecosystem



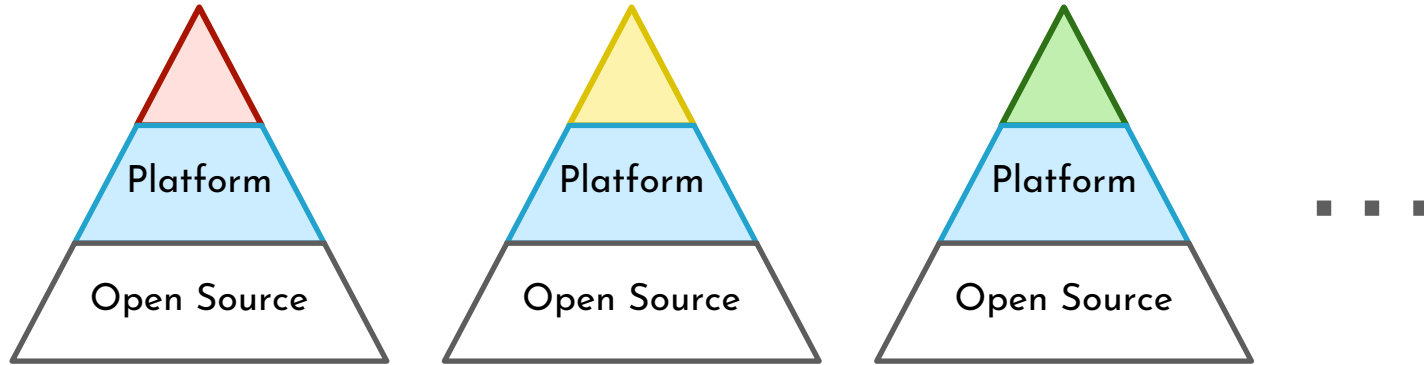
Once you become open source...



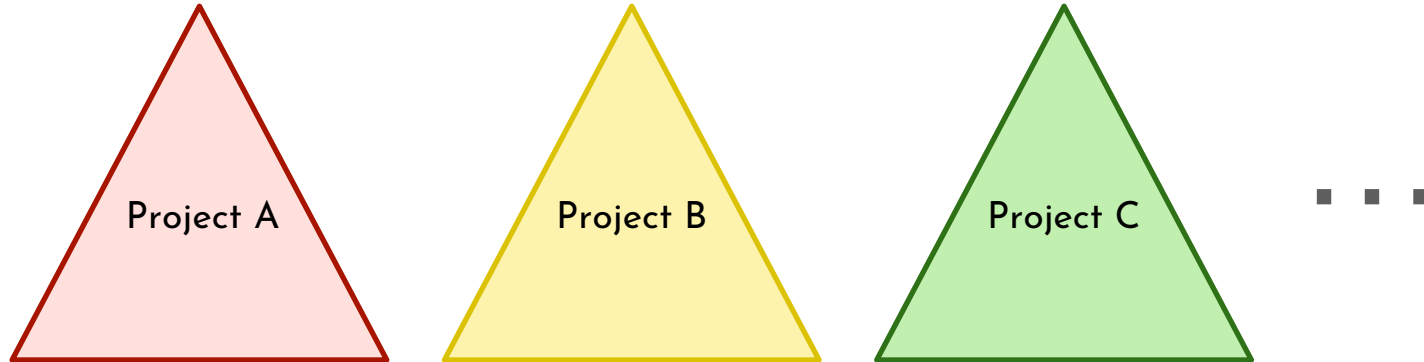
# Value Proposition



# Business Concept



Which is more resource efficient?





<https://github.com/autowarefoundation/autoware>

# Autoware



**50+**

Vehicle Models



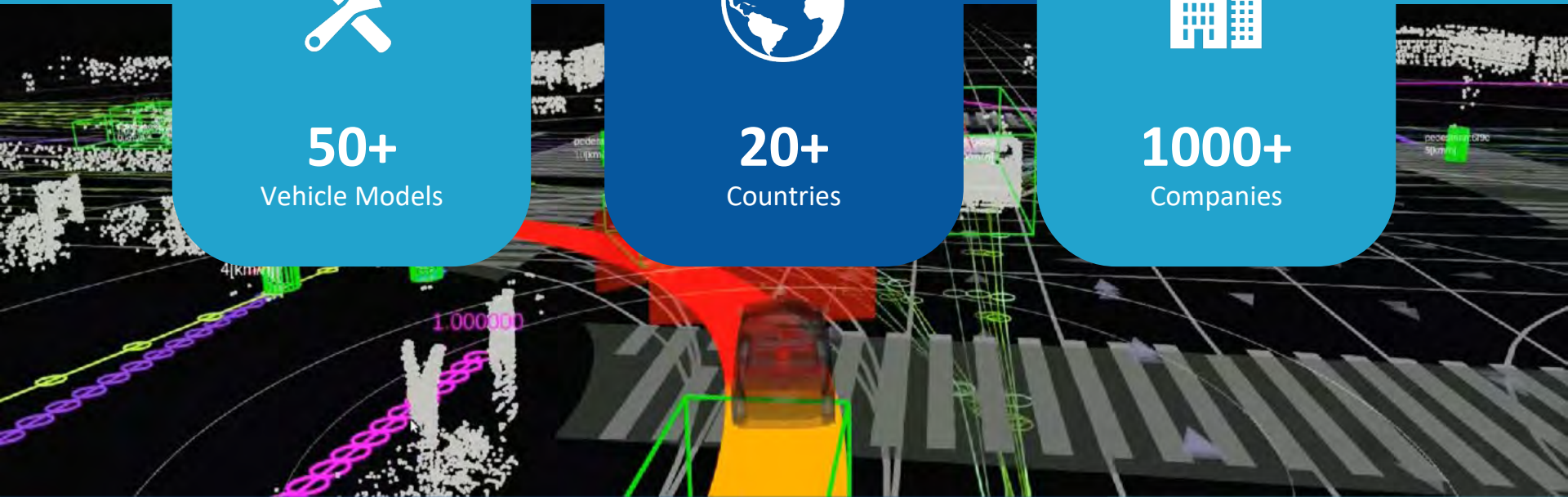
**20+**

Countries



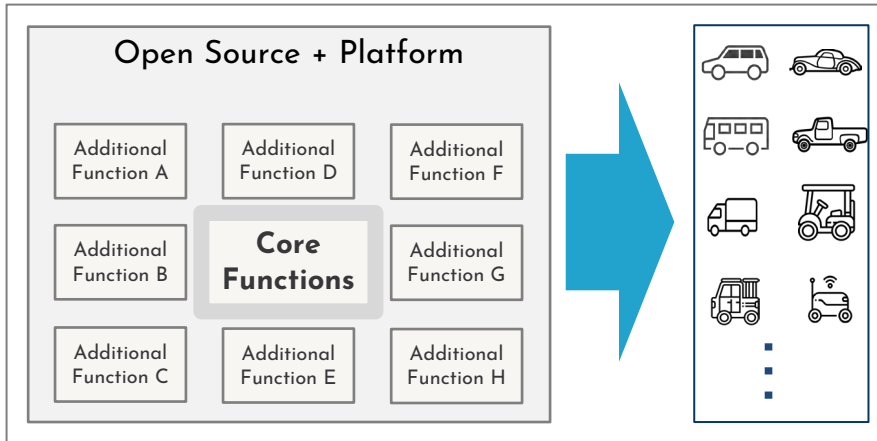
**1000+**

Companies



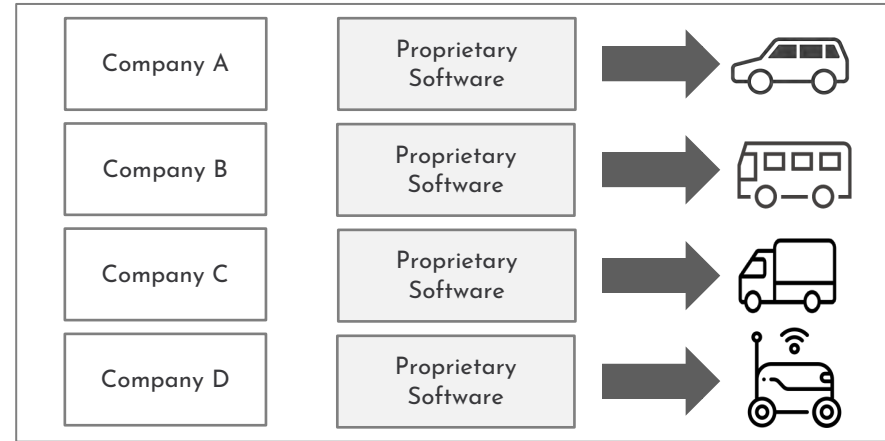
# Open Architecture

## TIER IV & Autoware



Applicable to various vehicles and environments

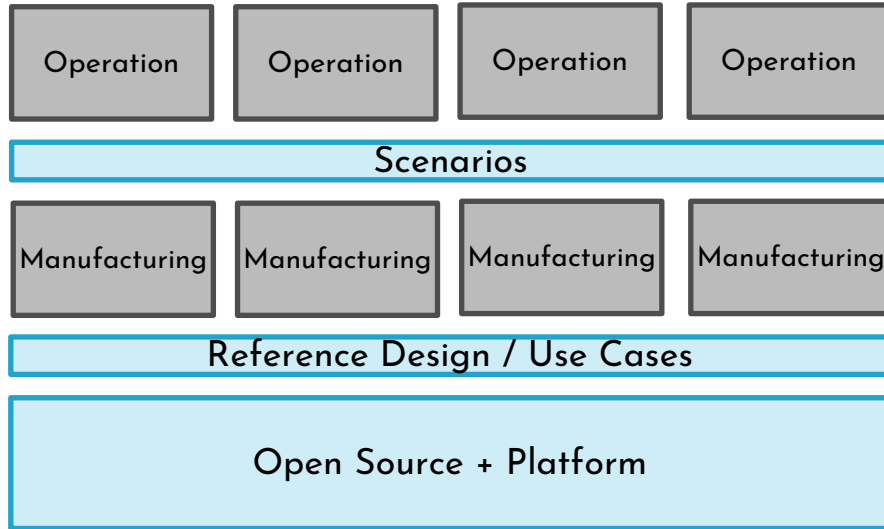
## Competitors



Optimized for specific vehicles and environments

# Open Development Process

## TIER IV & Autoware

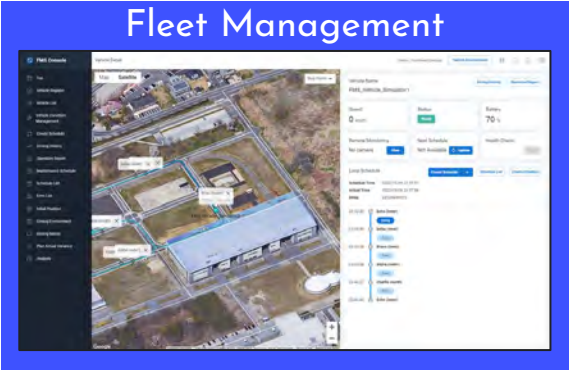
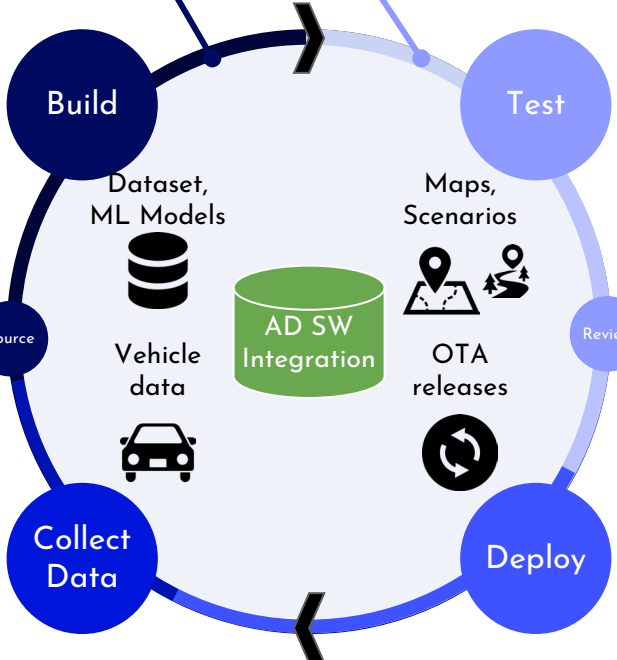
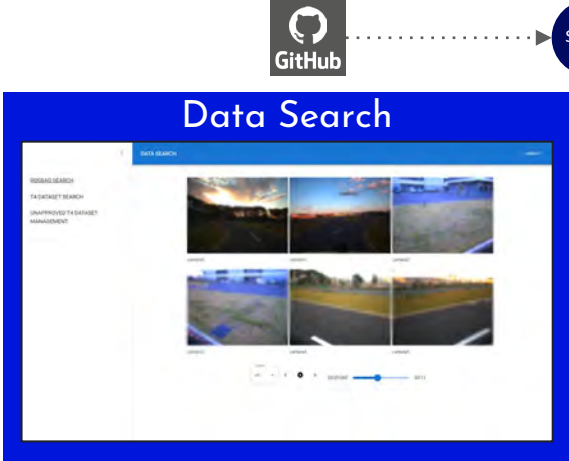
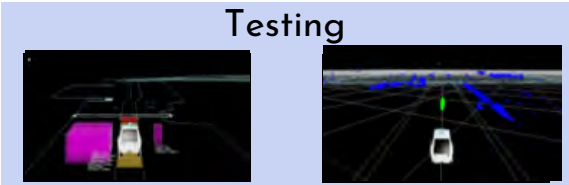
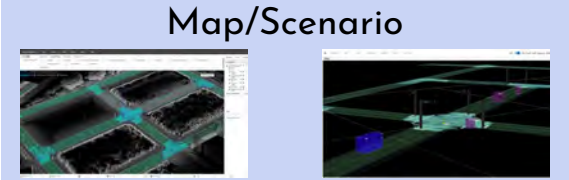


## Competitors

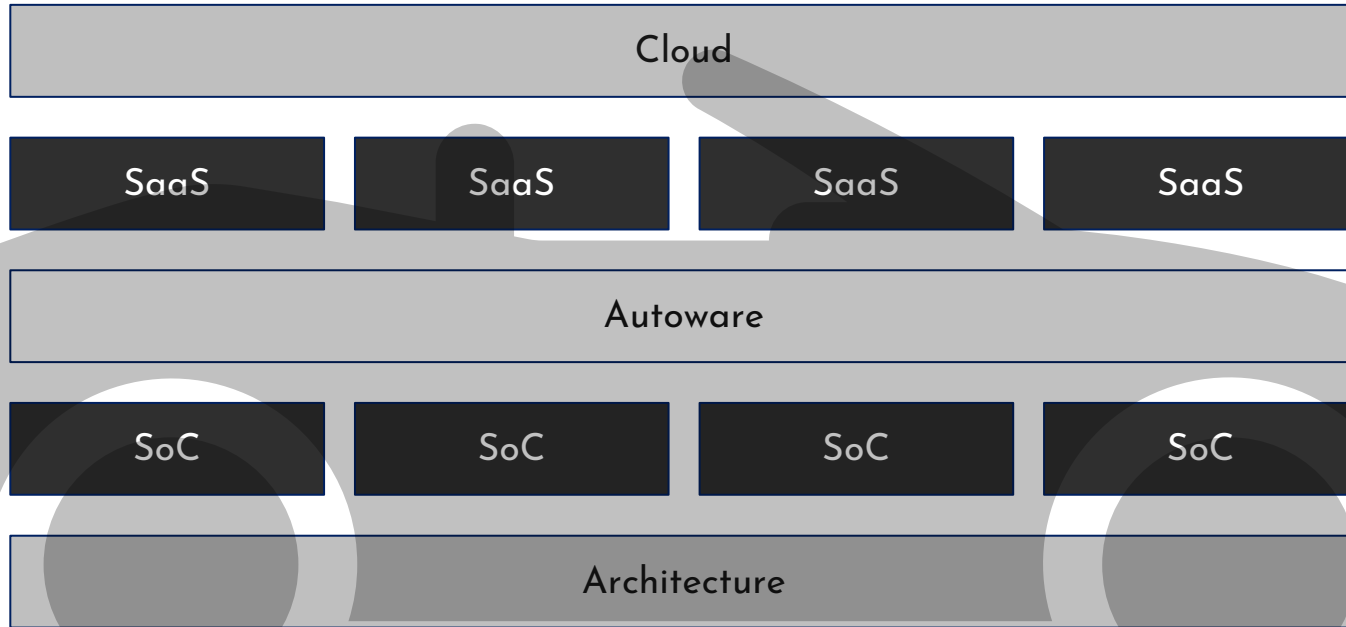




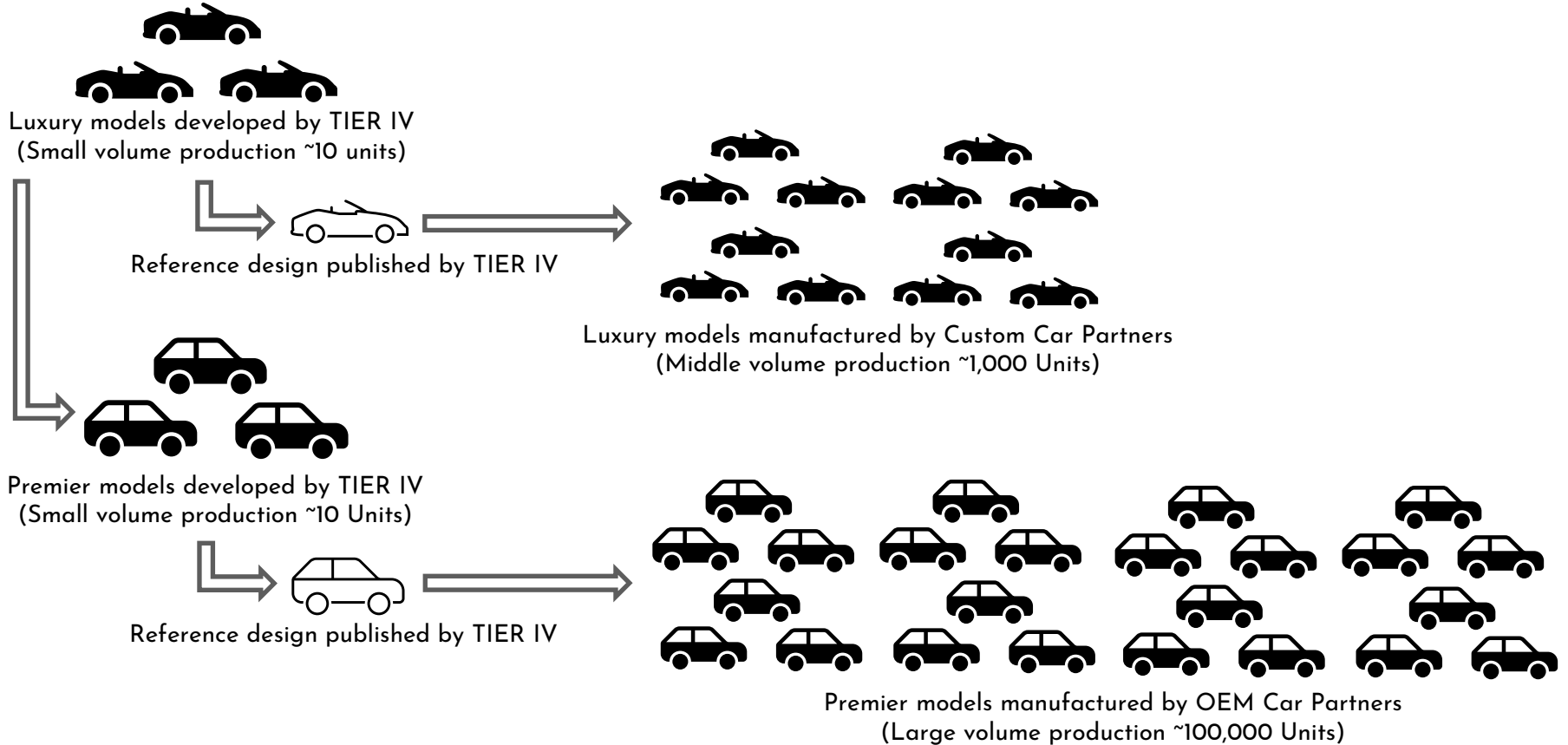
# Open DevOps Framework



# Go Beyond: Open Reference Design



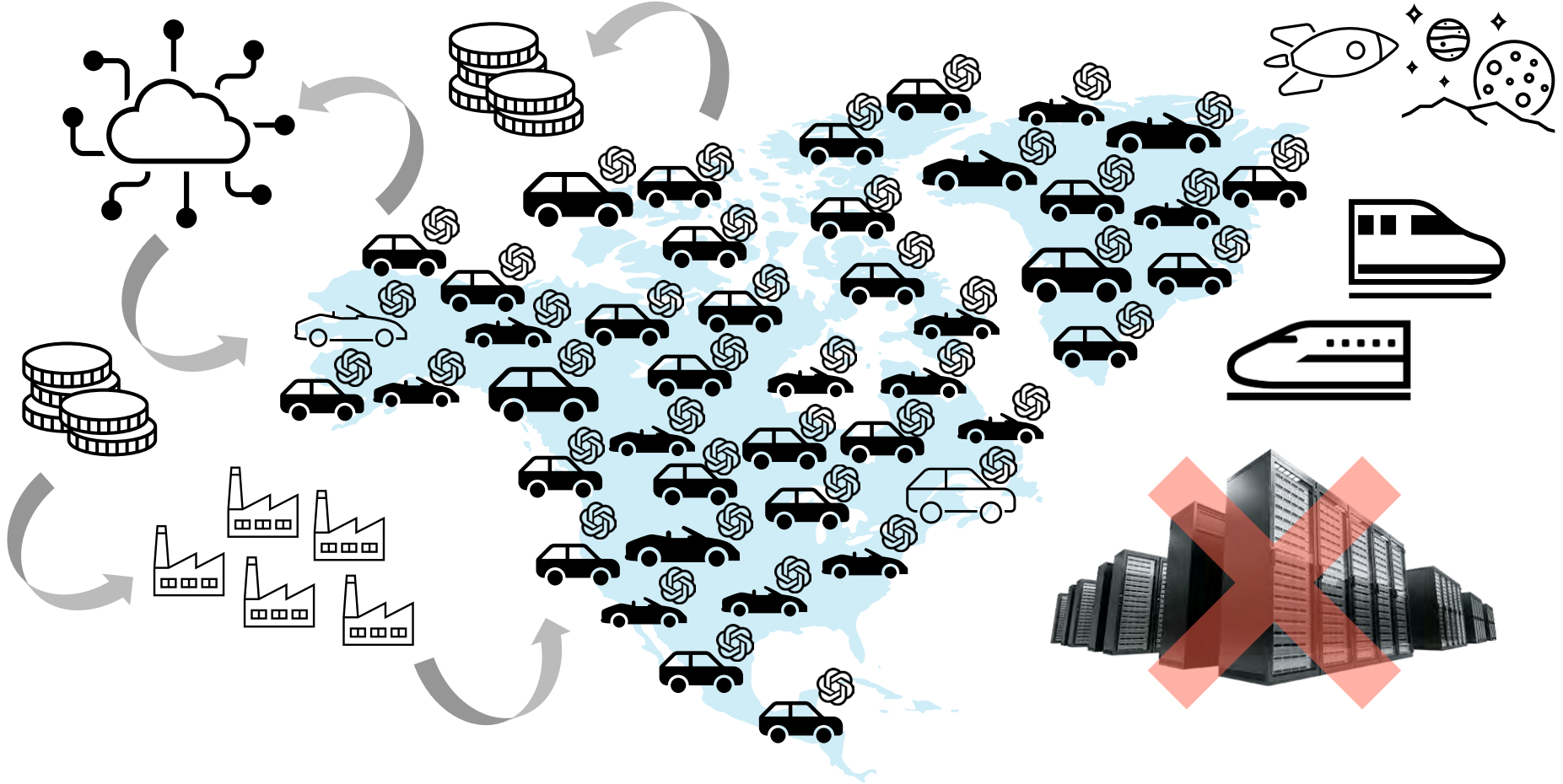
# Go Beyond: Open Vehicle Development



# Go Beyond: Open MLOps



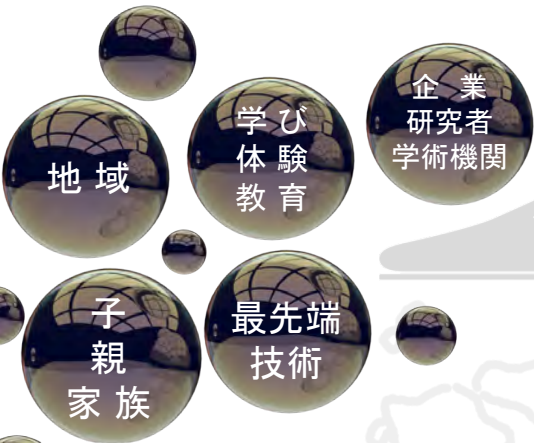
# Go Beyond: Open Mobility of Value



# リニア中央新幹線の沿線都市のまちづくり



中央新幹線 沿線都市の価値向上



総合知 がつなぐ Well-being



- 循環社会の形成
- 先端技術の実装

イノベーション創出



robot



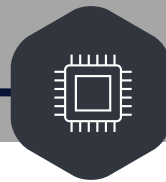
energy



AI



space



material

and more



THANKS!

