

Mean global salinity for the first 4 months of Aquarius measurements (top). Close-up of 7-day snapshot of the eastern Pacific low-salinity zone showing small-scale salinity structure related to surface current meanders and eddies (bottom).

図 3-81 海水の塩分濃度観測<sup>63</sup>

<sup>63</sup> [https://aquarius.oceansciences.org/cgi/sci\\_results.htm](https://aquarius.oceansciences.org/cgi/sci_results.htm)

GOCI-2 (Geostationary Ocean Color Imager: Follow-on) :

世界初の静止軌道からの海色観測衛星 GOCI の後継として、韓国によって GOCI-2 が 2020 年 2 月 18 日に打ち上げられ、運用中である。

韓国周辺域を観測した情報（特に海洋）を解析し、配信しており、当然日本域も含まれる（図 3-82）。



図 3-82 GOCI-2 観測データのエリア 12 の Slot 別に情報が提供されている

GOCI-2 による (L2) 観測プロダクト一覧を図 3-83 に示す。海洋関係のプロダクトが多く、クロロフィル A 濃度のフロント（境界）や漁業向けの情報（FGI）があることも興味深い。

プロダクト名 <sup>*1</sup>	略称 <sup>*1</sup>	定義 <sup>*2</sup>
Rayleigh Corrected Reflectance [レイリー散乱補正済反射率]	R <sub>boc</sub>	Sea surface reflectance with corrected Rayleigh scattering in the atmosphere
Remote Sensing Reflectance [海面反射率]	R <sub>rs</sub>	Sea surface reflectance corrected through atmospheric correction
Absorption Coefficients [光吸収係数]	A	Coefficient of the equation that calculates the degree to which seawater absorbs light
Backscattering Coefficients [後方散乱係数]	B <sub>b</sub>	Coefficient of the equation that calculates the degree to which light is scattered in the water in the opposite direction of travel
Diffuse Attenuation Coefficient [拡散減衰係数]	K <sub>d</sub>	Light Diffusion Attenuation Coefficient
Secchi Disk Depth [透明度]	Z <sub>sd</sub>	Horizontal Water Clearness
Chlorophyll-a Concentration [クロロフィル a 濃度(植物プランクトン)]	Chl	Chlorophyll Concentration in Phytoplankton in Seawater
Total Suspended Material Concentration [総浮遊物濃度]	TSS	Total Suspended Minerals in Seawater
Colored Dissolved Organic Matter [有色溶存有機物]	CDOM	Amount of Organic Matter Dissolved in Seawater
Floating Algae [流れ藻]	FA	Amount of Floating Algae. Present on the Surface of Seawater
Marine Fog [海霧]	MF	Sea Fog Existence
Red Tide Index [赤潮指数]	RI	Red Tide Occurrence Status
Sea Ice [海氷]	SI	Lump of Ice, Present in the Sea
Primary Production [基礎生産]	PP	Ratio of energy production in the form of organic compounds, produced through photosynthesis and chemical synthesis for the unit hour in the sea
Chlorophyll-a Front [クロロフィル a 濃度(境界面)]	CF	Boundary where seawater characteristics are rapidly changed horizontally in the sea. It is formed by meeting two water masses with different properties
Sea Surface Current [海面流]	SSC	Seawater direction, flow rate information

プロダクト名	略称	定義※2
Low Sea Surface Salinity [海面塩分濃度]	LSSS	Identification of water masses with low salt concentration, flowing from land, etc
Fishing Ground Information [漁場情報]	FGI	Index that divides the environment where a fishery is formed into five levels
Aerosol Optical Depth [エアロゾル光学的厚さ]	AOD	Attenuation coefficient of light quantity for light propagation path
Aerosol Type, including DUST Aerosol Type [エアロゾルタイプ]	AT	Aerosol Type (Yellow Sand)
Land Surface Reflectance [大気補正済陸域反射率]	LSR	Ground surface reflectance corrected through atmospheric correction
Land Surface Albedo [地表面アルベド]	LSA	Albedo of land surface
Normalized Difference Vegetation Index [植生指数]	NDVI	Index indicating the vegetation distribution and characteristics from the optical characteristics of the vegetation area
Enhanced Vegetation Index [植生指数]	EVI	Enhanced vegetation index based on the MODIS data
Land Cover [土地被覆]	LC	Land Cover Map

※1 [https://ioccg.org/wp-content/uploads/2016/02/2.11-ioccg26-jkchoi\\_goci\\_2.11.pdf](https://ioccg.org/wp-content/uploads/2016/02/2.11-ioccg26-jkchoi_goci_2.11.pdf) より抜粋

※2 <https://kosc.kiost.ac.kr/index.nm?menuCd=49&lang=en> 参照

図 3-83 GOCI-2 の L2 プロダクト一覧

GOCI-2 海洋に関するデータ例（日本周辺の拡大図）を図 3-84 に示す。

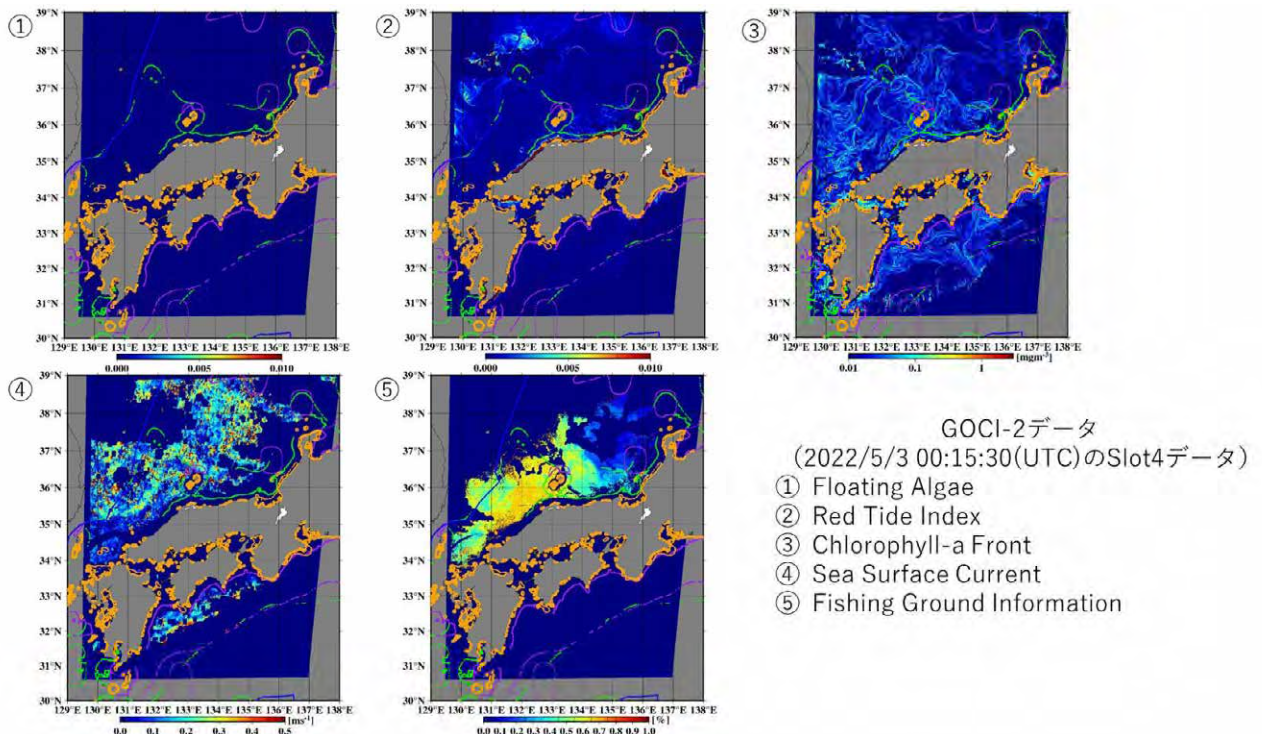


図 3-84 GOCI-2 の各種プロダクトを図示したもの（日本周辺域）