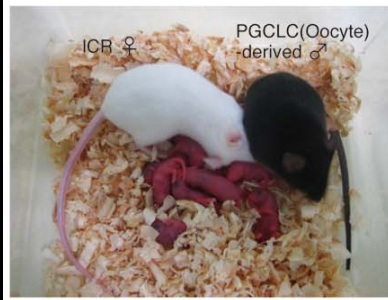
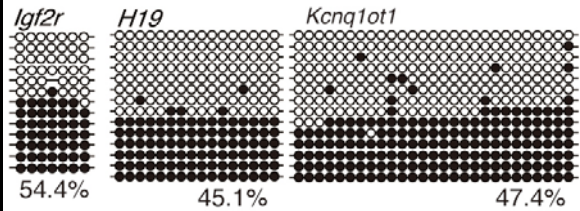
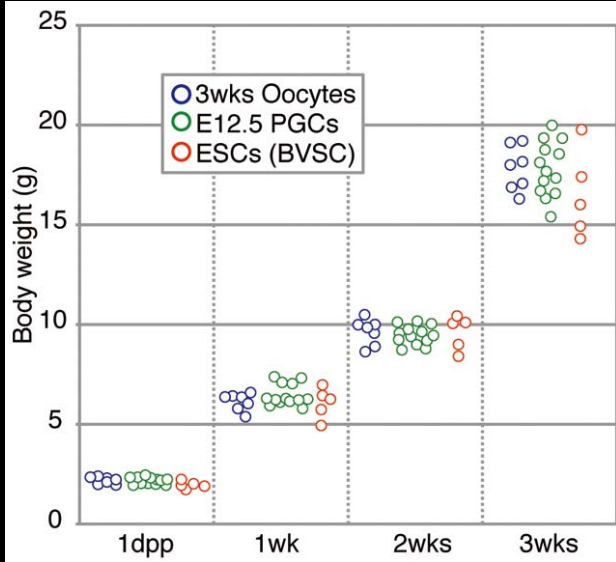


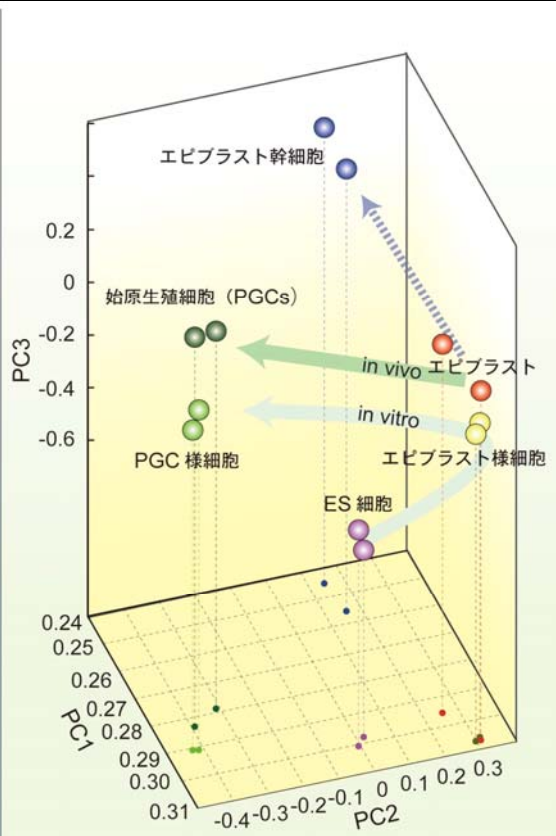
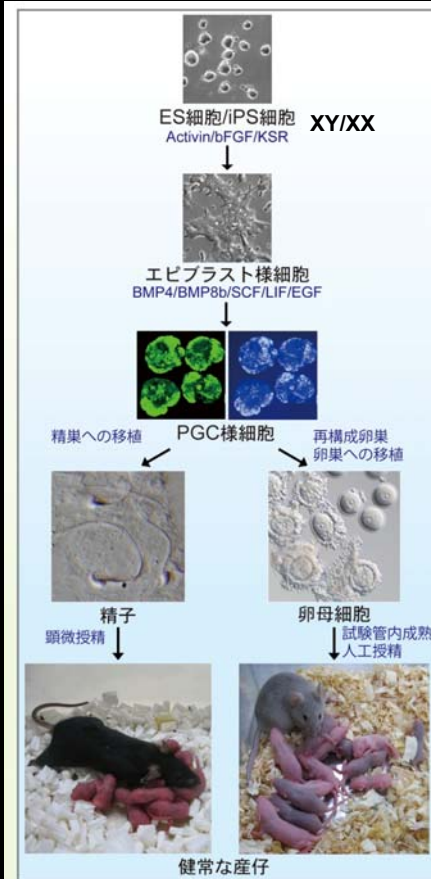
PGCLC由来卵子から健全な子孫の誕生



Mouse ID	Sex	No of pups/litter
#10121	Male	9
#11011	Male	10
#11012	Female	9
#01021	Male	13
#01022	Female	12

(Hayashi et al., Science, 2008)

ES/iPS細胞を用いた生殖細胞形成過程の培養ディッシュ上での再現



(Hayashi et al., Cell, 2011; Science, 2012)