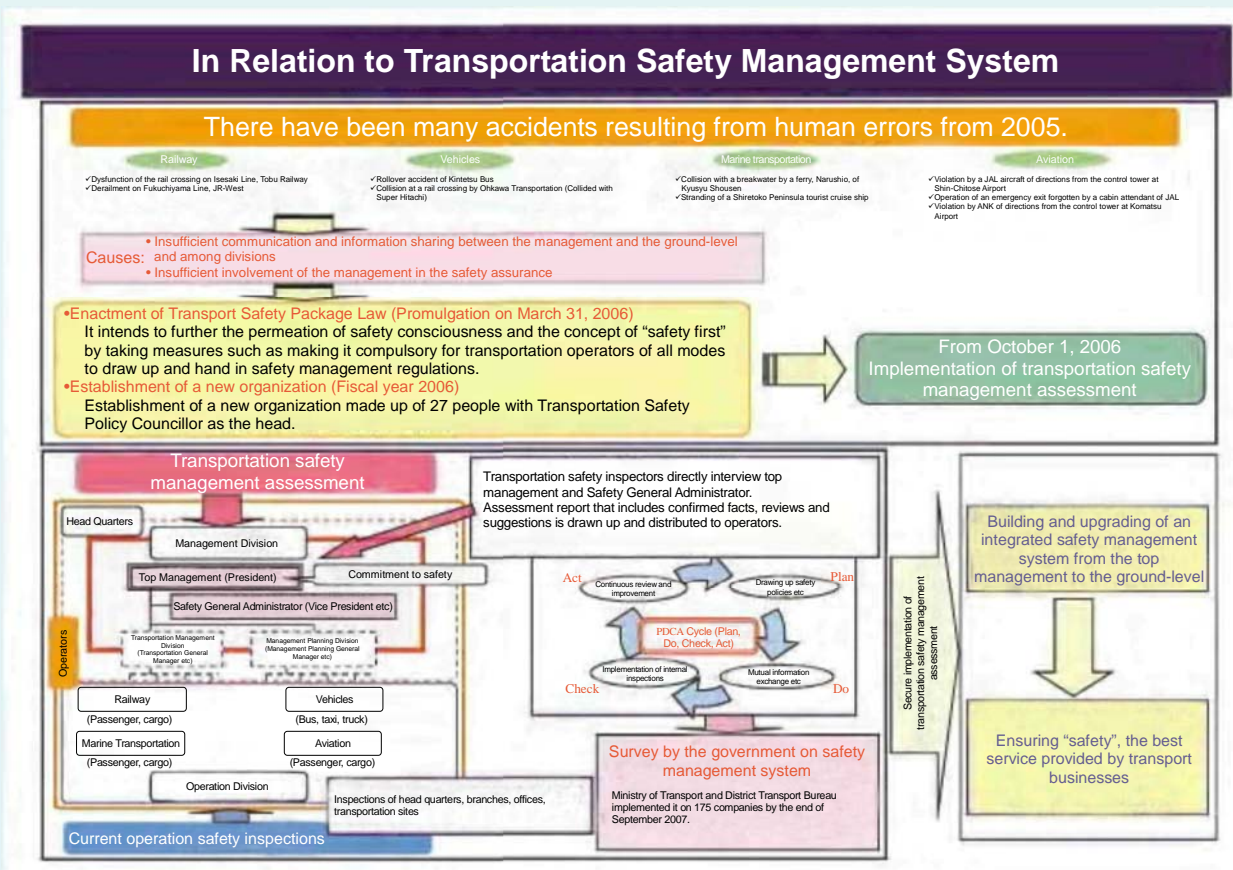


## “First Anniversary of the Transport Safety Management System”

The Transport Safety Management System was founded in response to accidents caused by human errors such as the Fukuchiyama Line derailment (2005). The system conducts direct interviews on the security management systems and confirms relevant documents with presidents, vice-presidents, and board members of the business management departments. It refers to the ISO9000 series of self-evaluation standards related to the quality control by enterprises. Additionally, communication with businesses centered around the advices to ensure safety is given more importance rather than guidance and penalties. It is also intended to improve the approach by the PDCA cycle. Evaluation is carried out based on “Guidelines for the Safety Management Regulations” (hereafter, “Guideline”) and advice for improvement measures is given to improve the approach further.



This system completed one year at the end of September 2007 and transport safety management was evaluated for 175 companies by this Ministry and district bureaus in the country. The general outline of these evaluation results were compiled in October 2007. They were as follows.

- (1) Under the leadership of top management, the basic framework is roughly constructed with the following points.
  - Creation and notification of safety management regulations that set out safety management rules for each business
  - Election and notification of a safety executive manager (person who oversees the approach concerning in-house safety)
- (2) However, many businesses were still developing the following approaches because the Transport Safety Management system had just started.
  - Understanding and reviewing the status of achievement of the safety measures on priority that determine the company’s goal and concrete means in accordance with the safety policy. (Guideline [3])

- Collection, arrangement and analysis of the information related to accidents and investigation of preventive measures of accidents (Guideline [7])
- Implementation and review of company-wide trainings with major accidents in mind (Guideline [8])
- Education and training for the workers necessary to maintain a safety management system including the business management department, and reflection to future education and training (Guideline [10])
- Implementation of internal audits of businesses related to the safety management system (Guideline [11])
- Review of the general security management system (Guideline [12])

We are hearing a wide range of opinion and requests of businesses through the transport safety management evaluation. As a result, while there were a lot of opinions that the transport safety management system was beneficial, there were opinions that could be used to improve the system such as those who wanted to have other companies' approaches introduced. On the basis of that, symposiums and seminars are held to promote this system and technical support is improved to construct the safety management system for businesses by collecting and spreading information on exemplary approaches. Enhancement of the transport safety management system and strengthening of the security audit system are promoted as the most important measures. We will continue to improve further the safety of the transportation businesses.

### Contents of the Guideline Related to the Safety Management Regulations

Formulating the guidelines applicable to the management work to ensure safety of transportation of the concerned business run by the business management department

