



電子複写不可

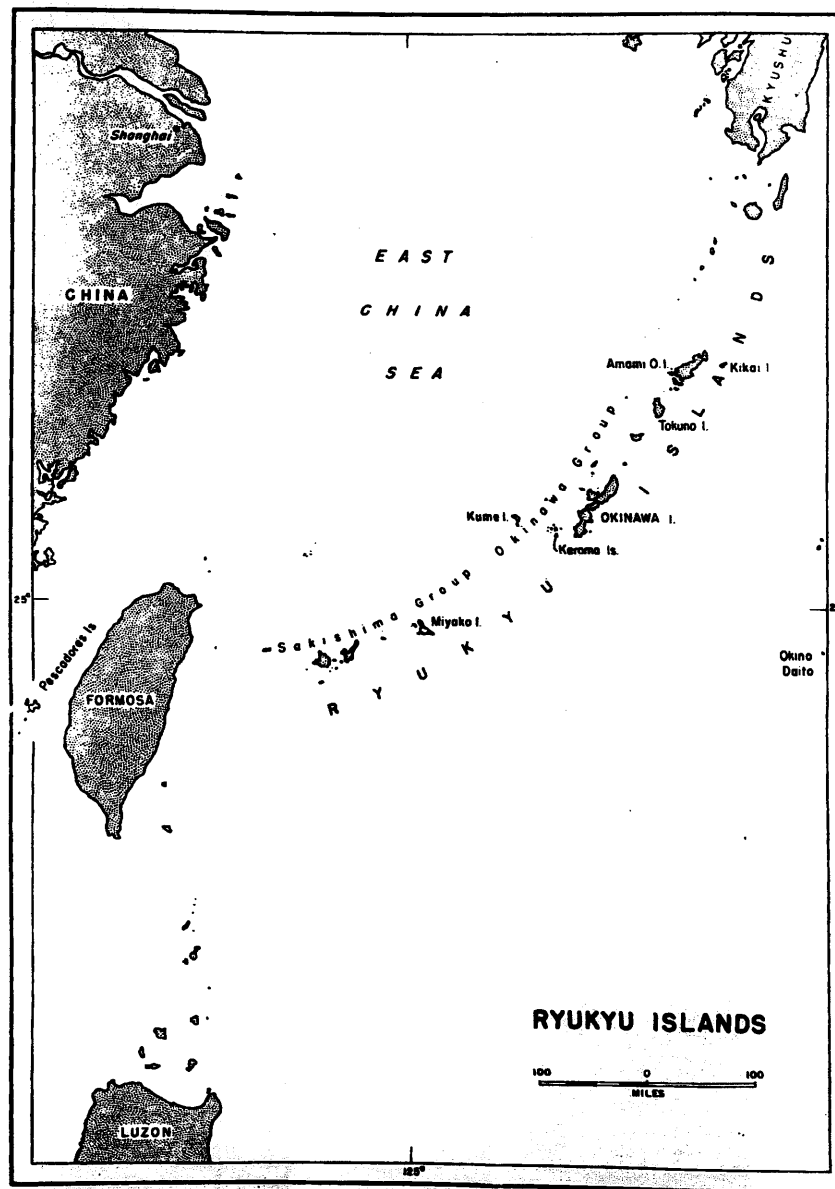


防衛研究所図書館

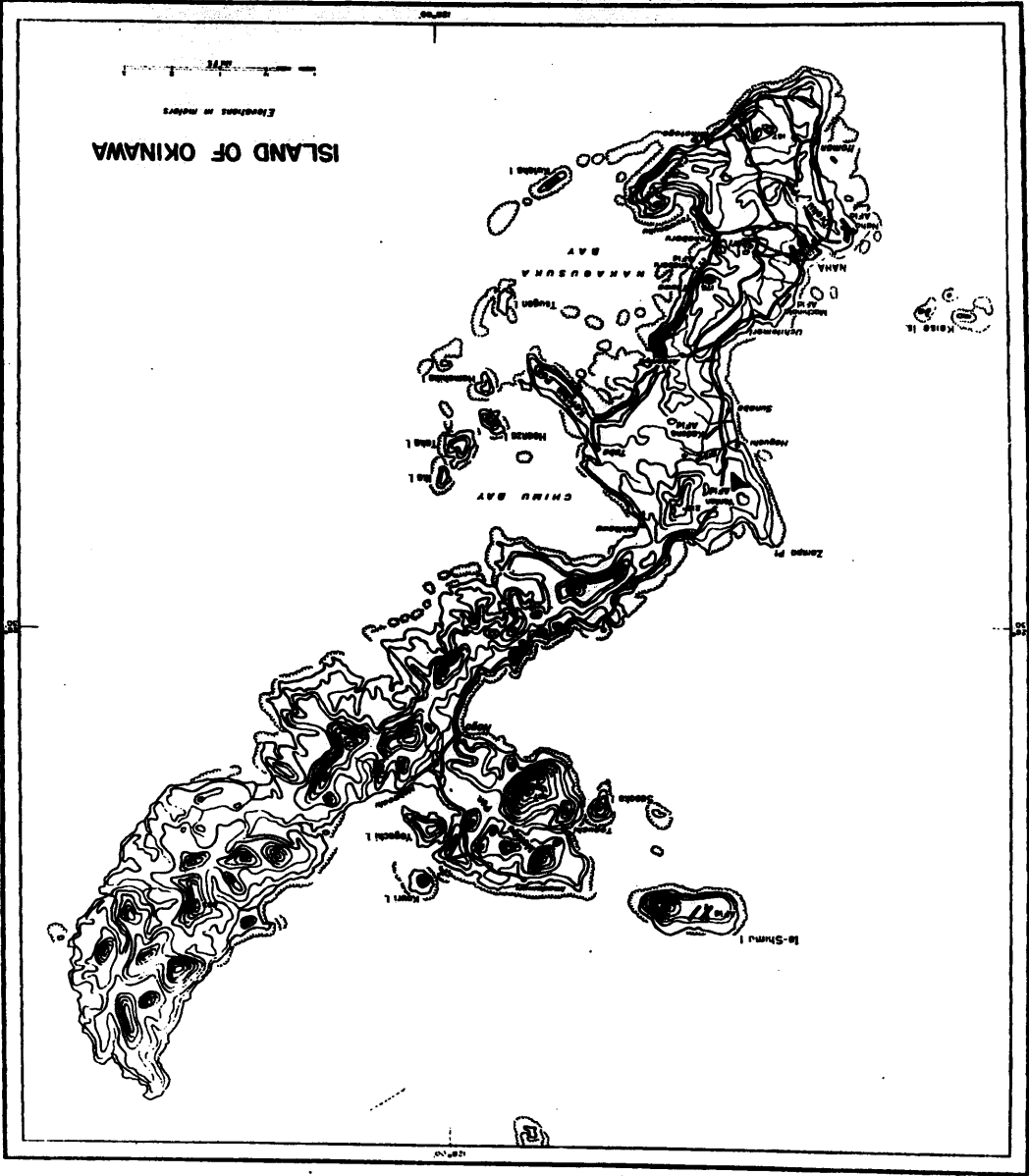
戰史 沖繩 作戰

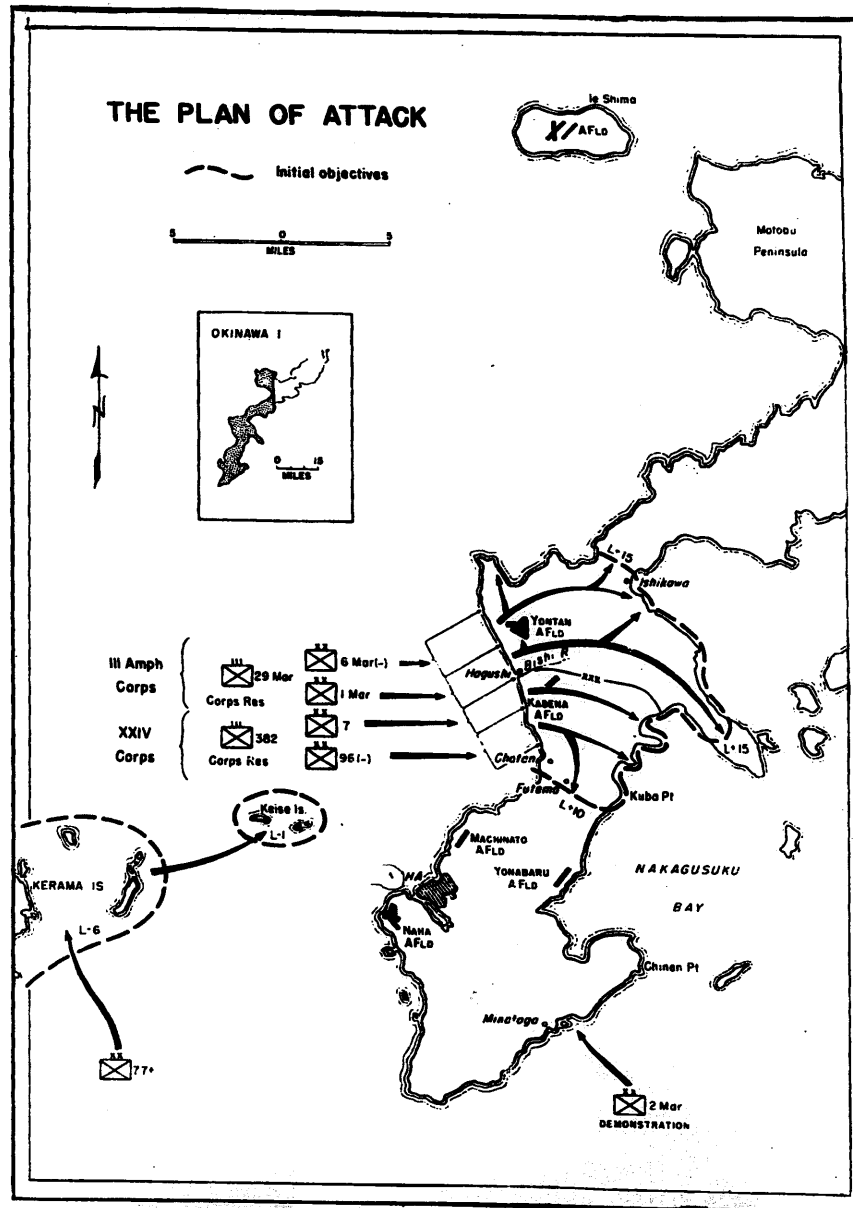
附圖 第一 部





MAP. NO. 2





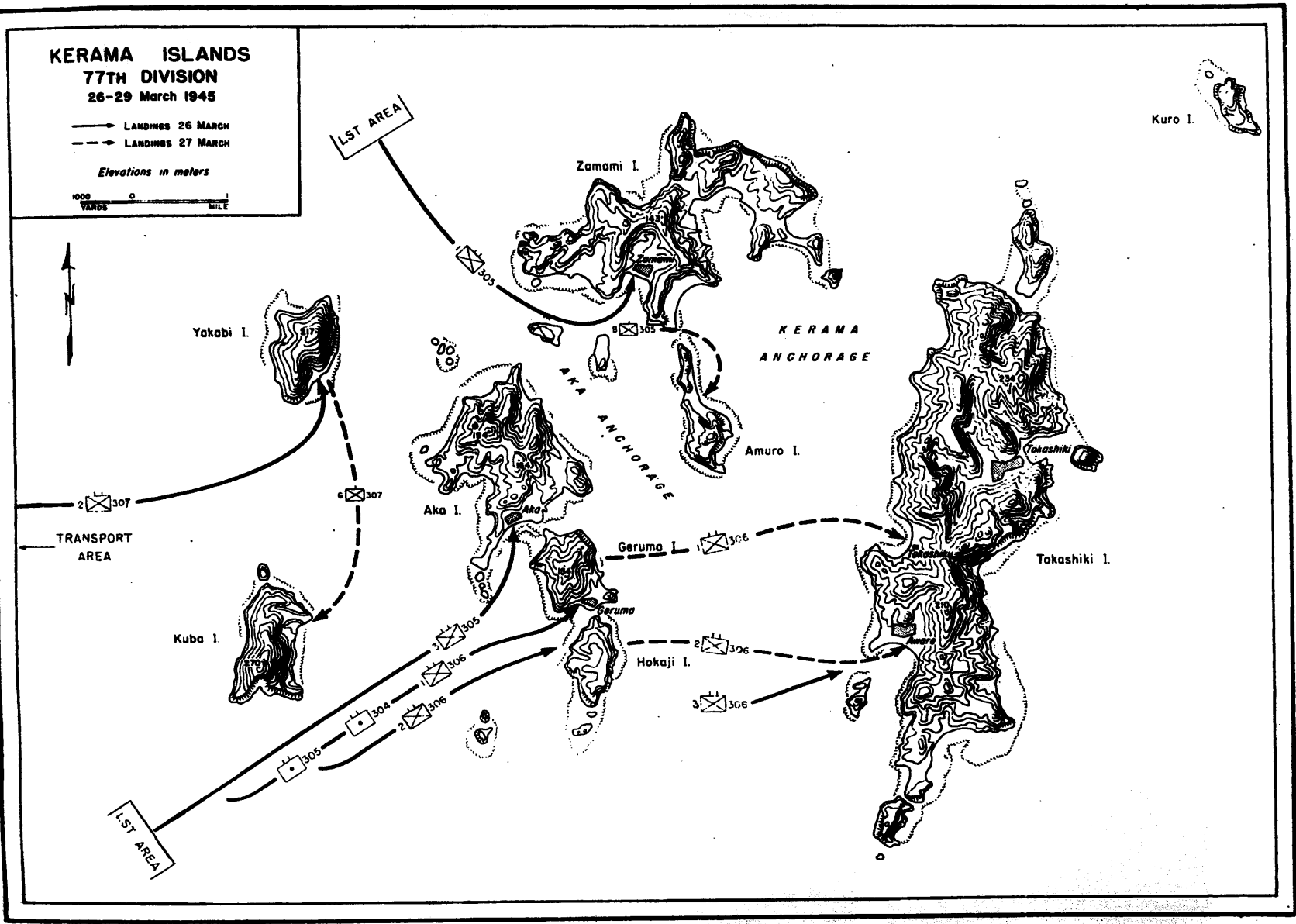
MAP. NO. 4

KERAMA ISLANDS
77TH DIVISION
26-29 March 1945

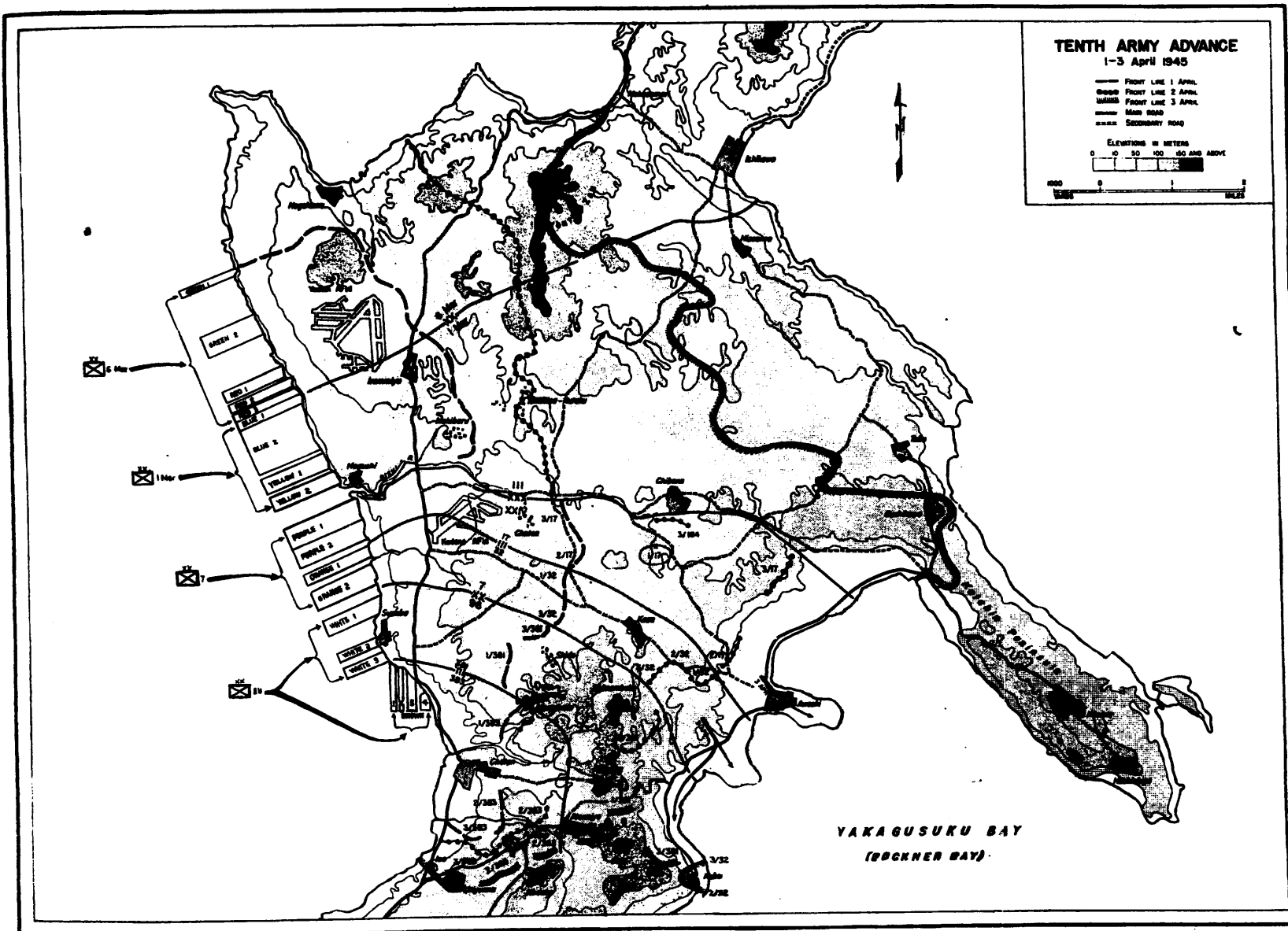
— LANDINGS 26 MARCH
 - - - LANDINGS 27 MARCH

Elevations in meters

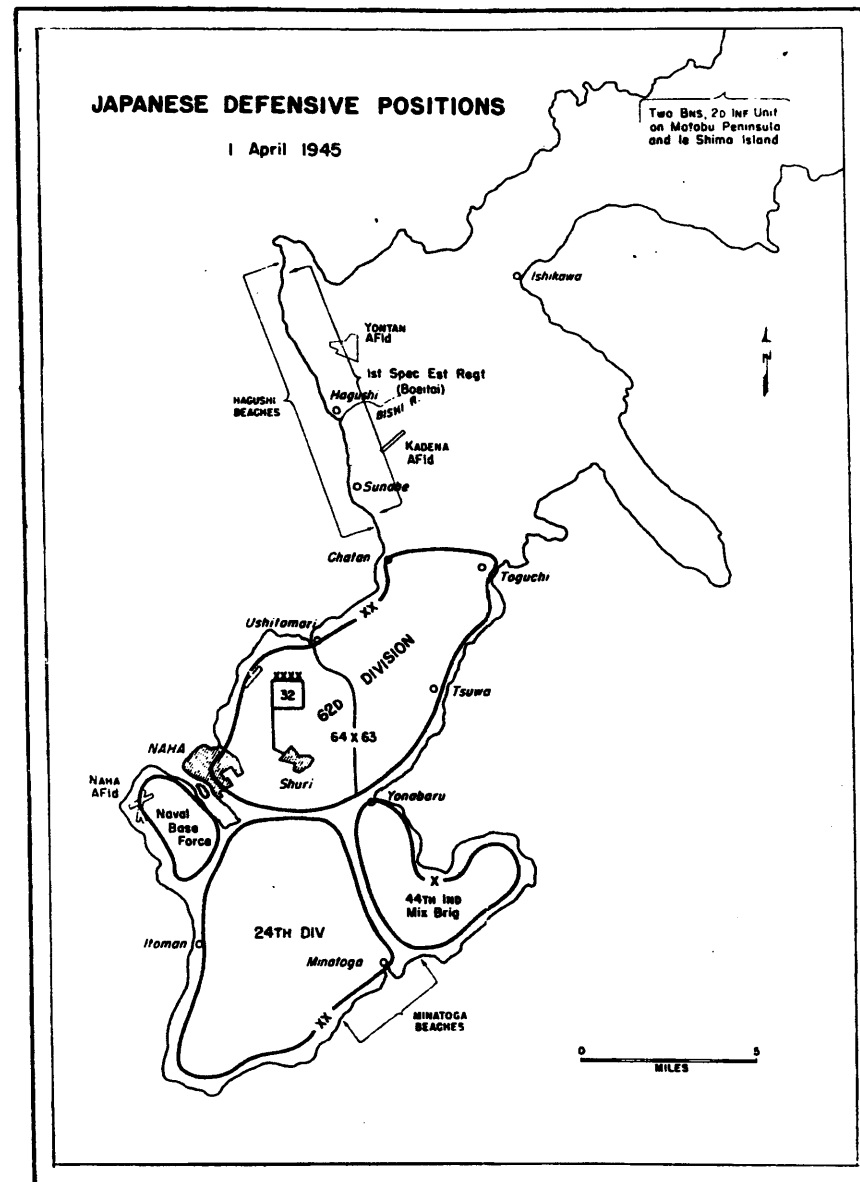
1000 0
 YARDS MILE



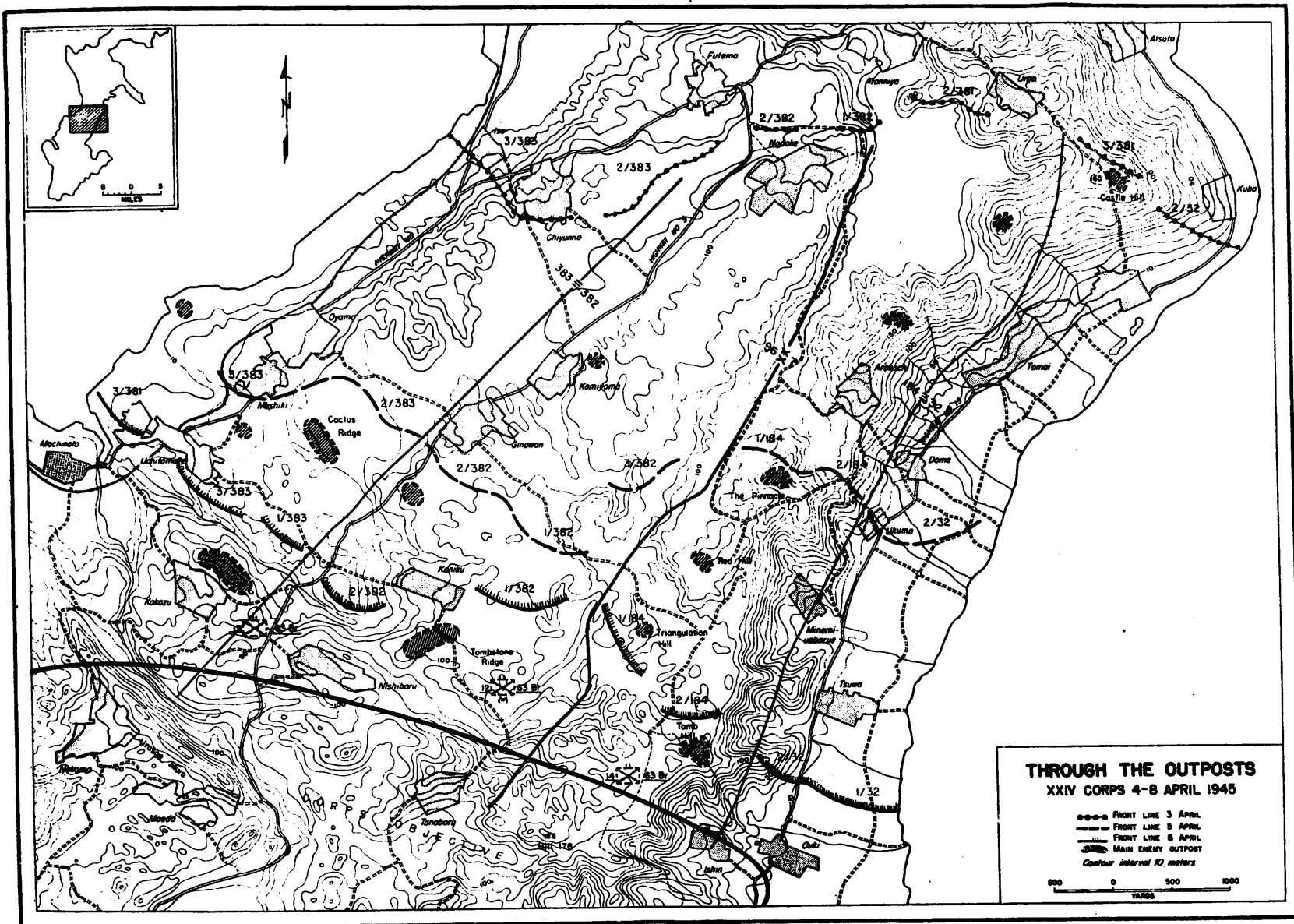
MAP. NO. 5



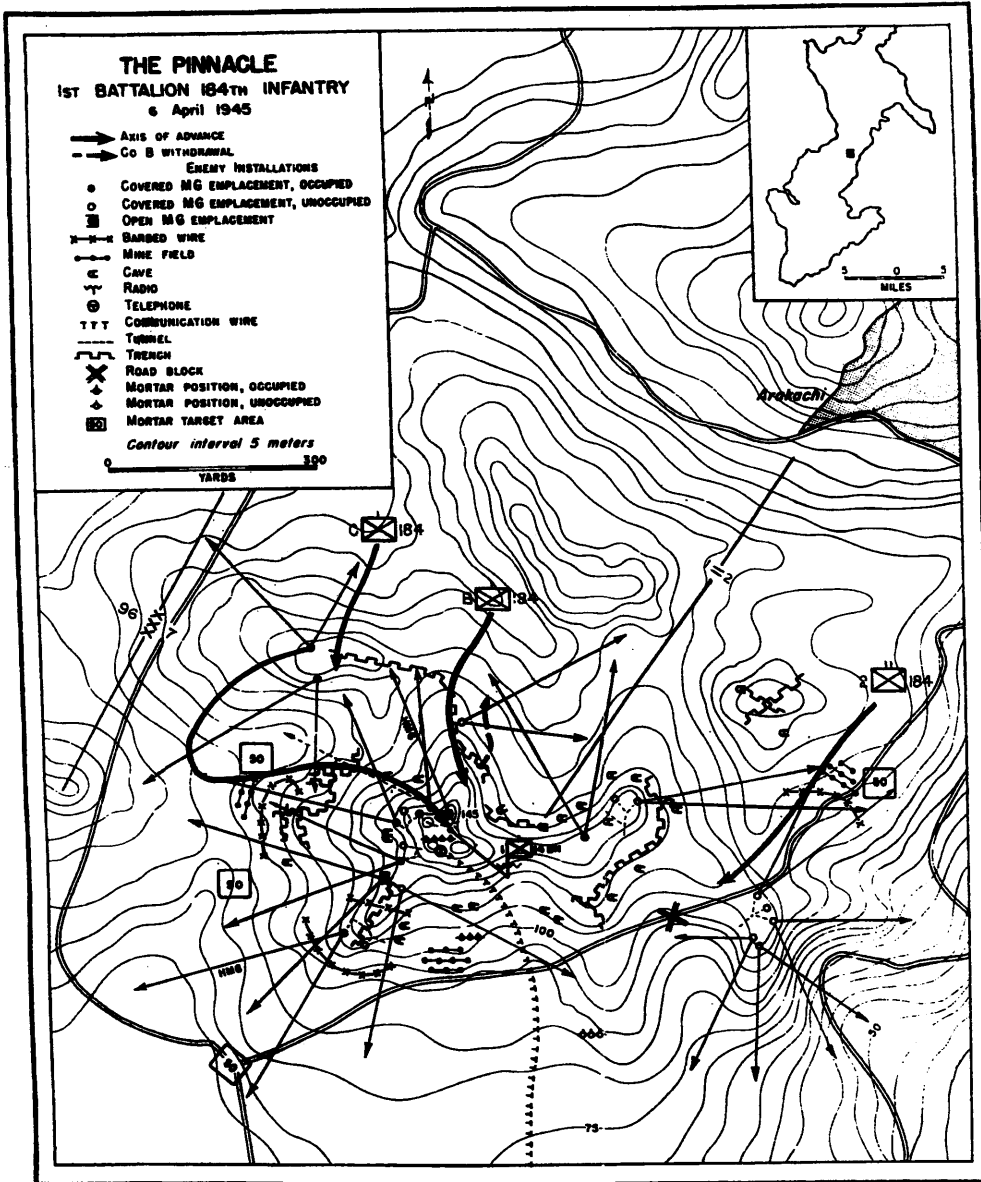
MAP NO. 6



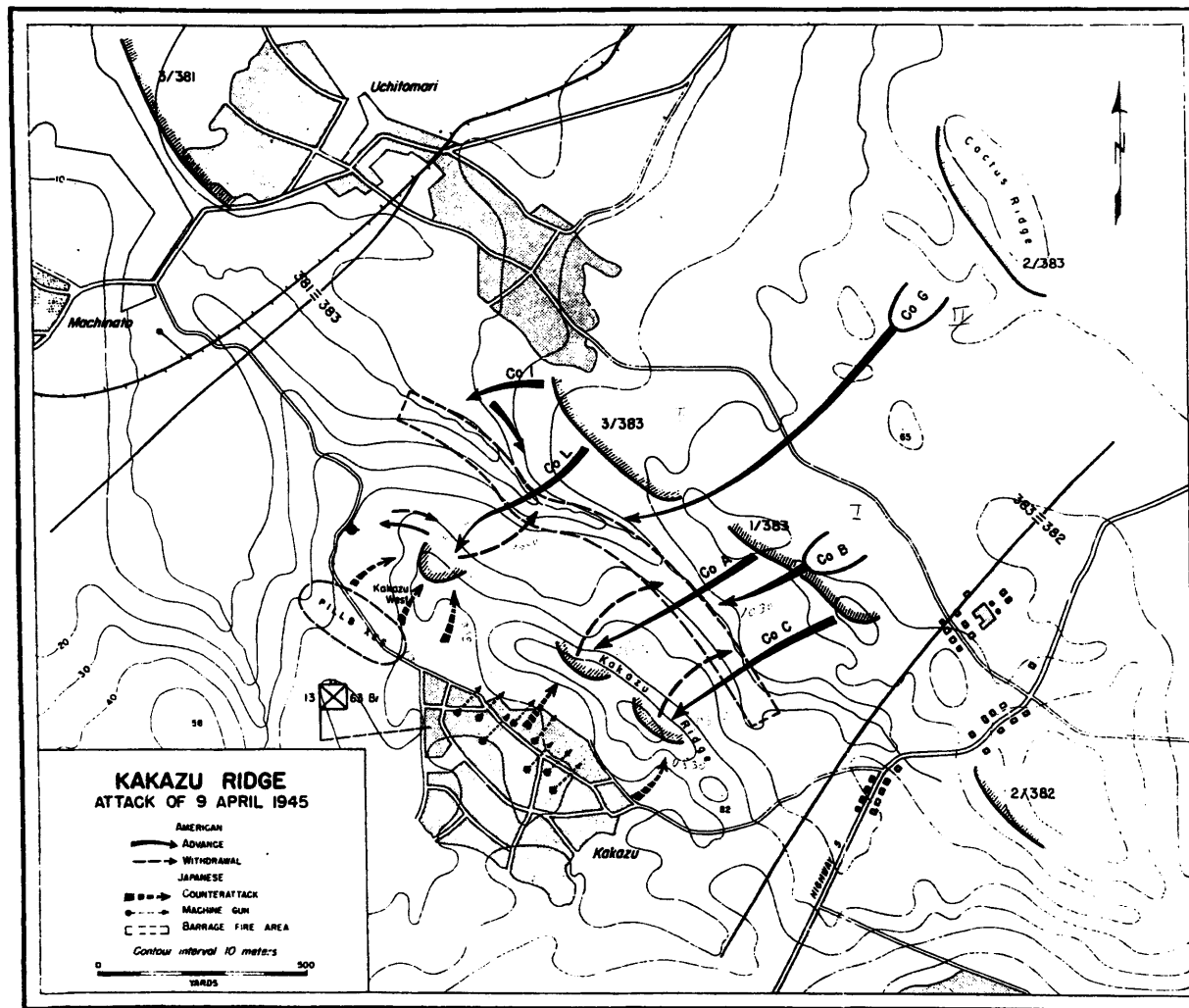
MAP. NO. 7



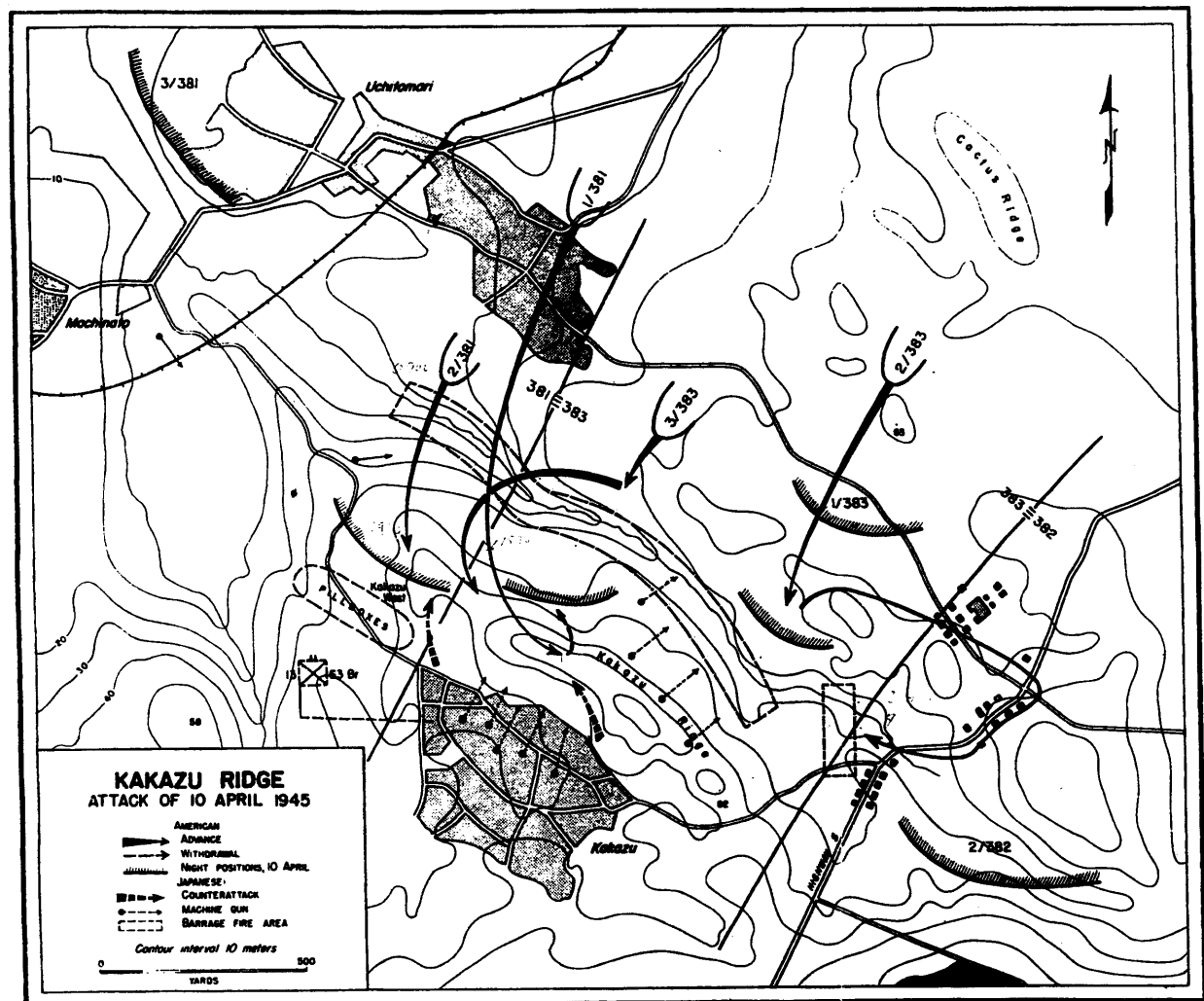
MAP NO. 8



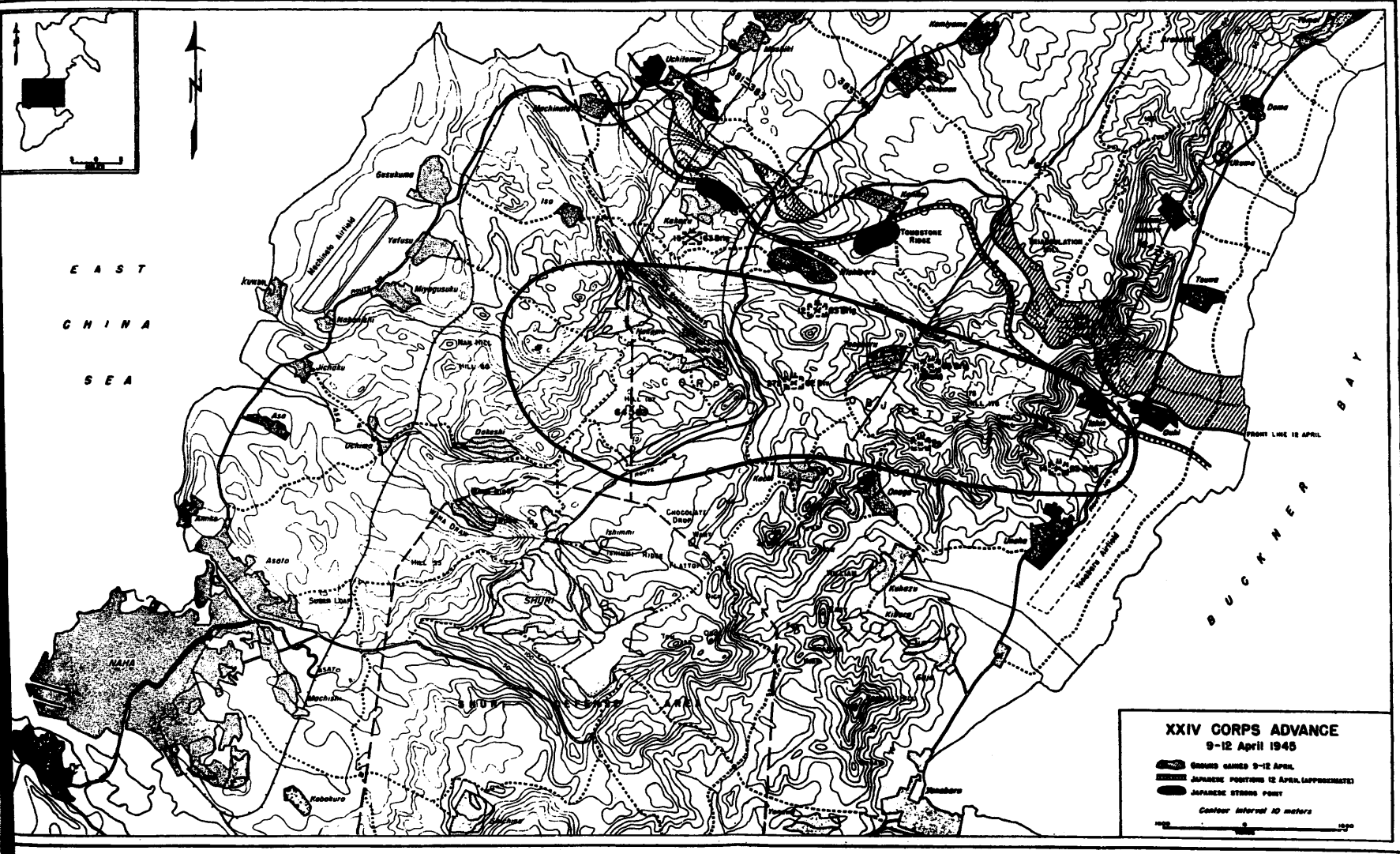
MAP. NO. 9



MAP. NO. 10



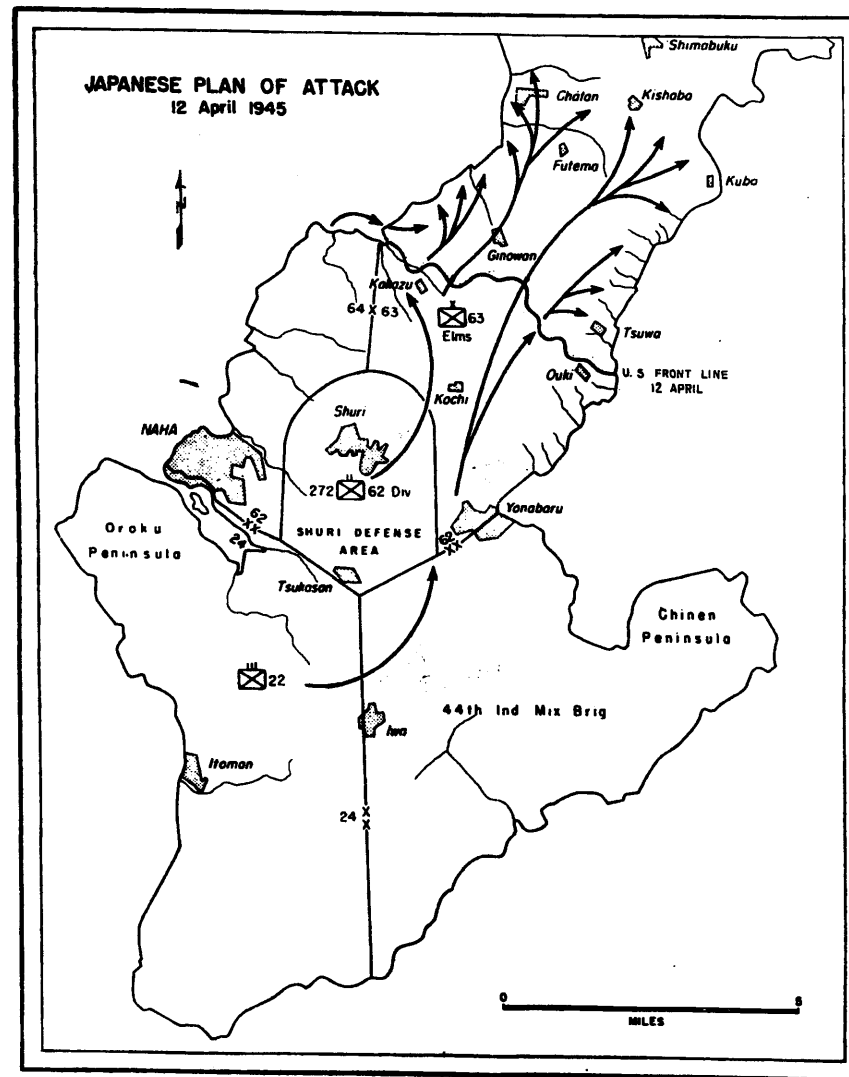
MAP. NO. 11



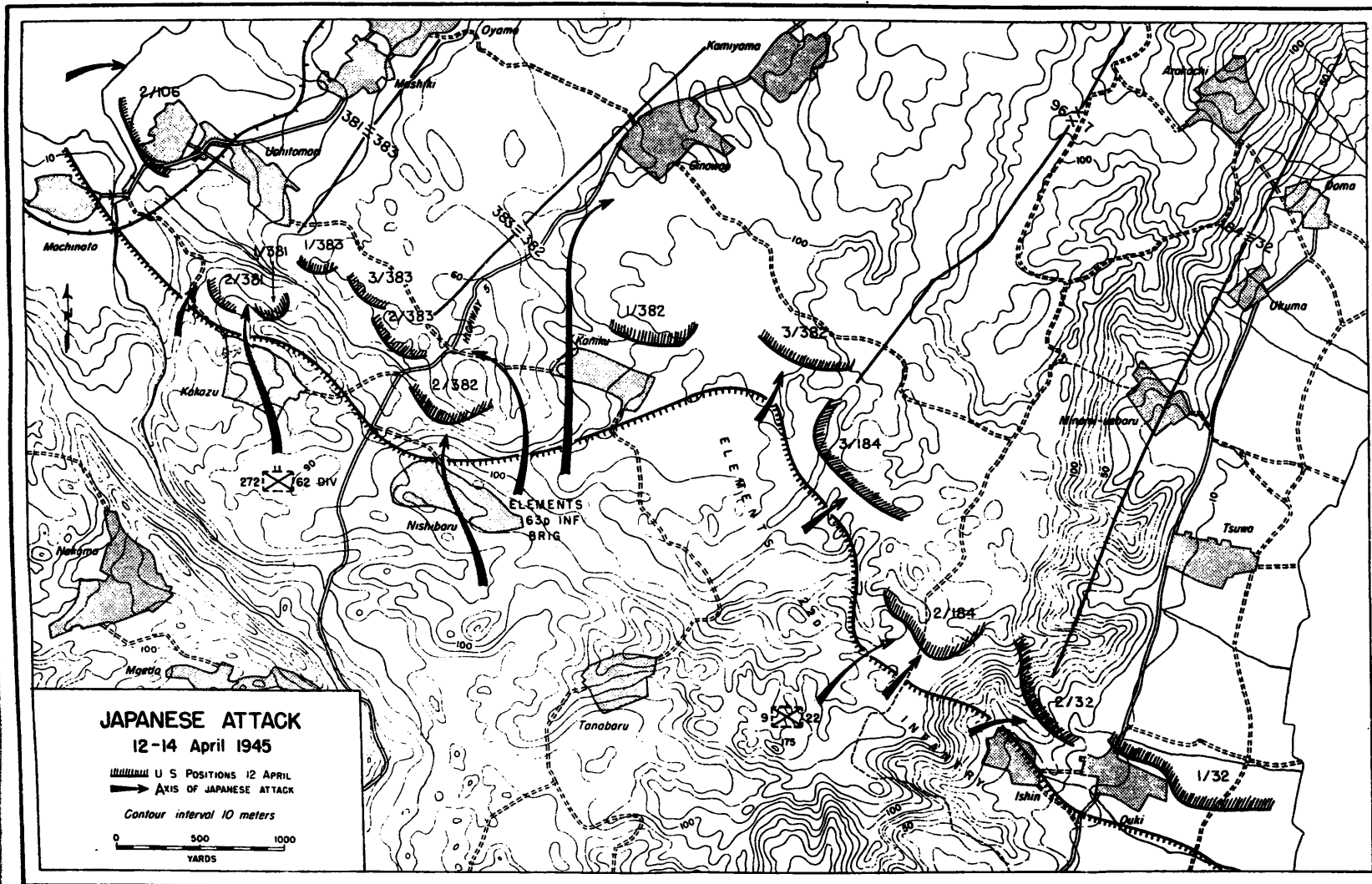
EAST
CHINA
SEA

BUCKNER BAY

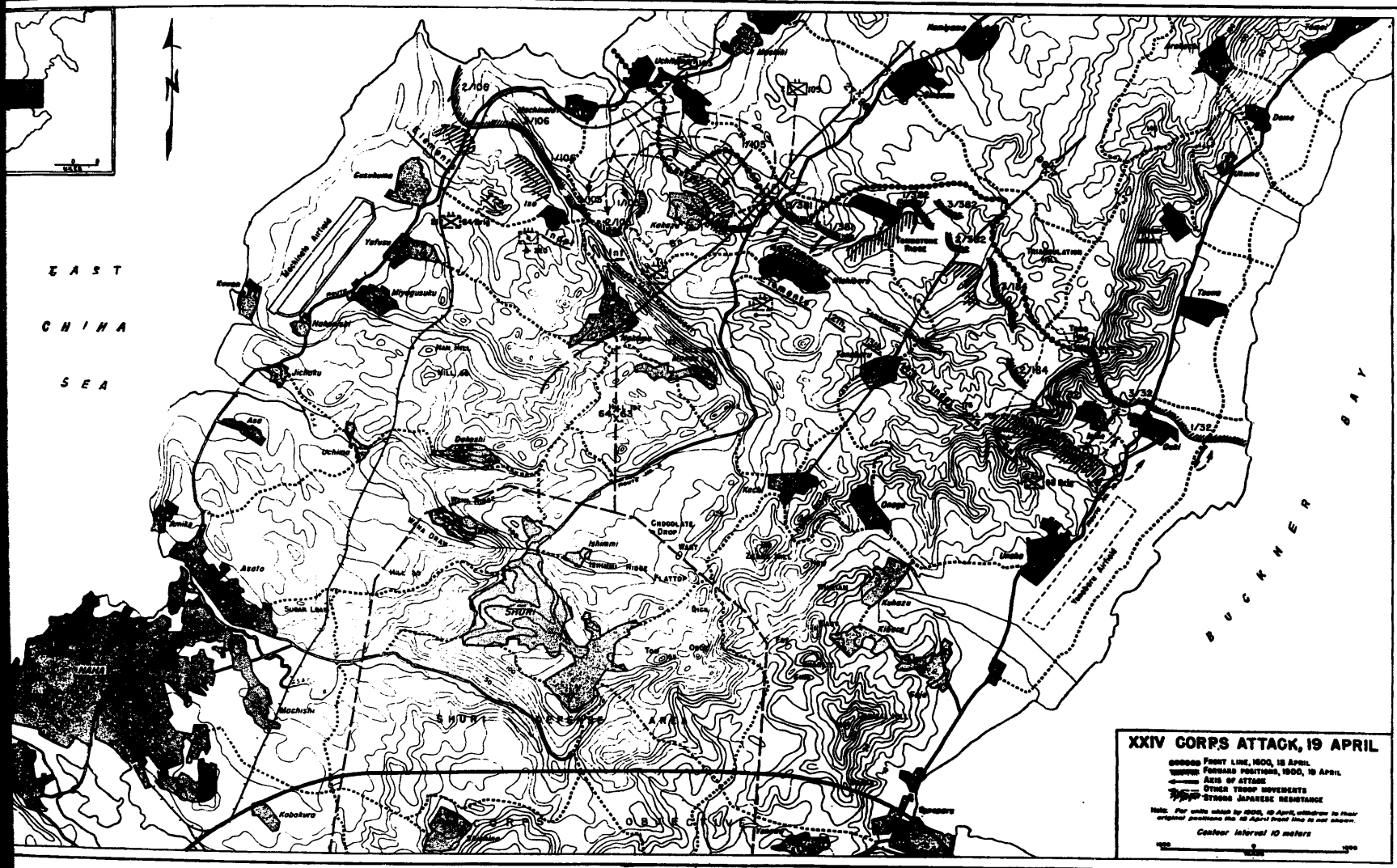
FRONT LINE 12 APRIL



MAP. NO. 13

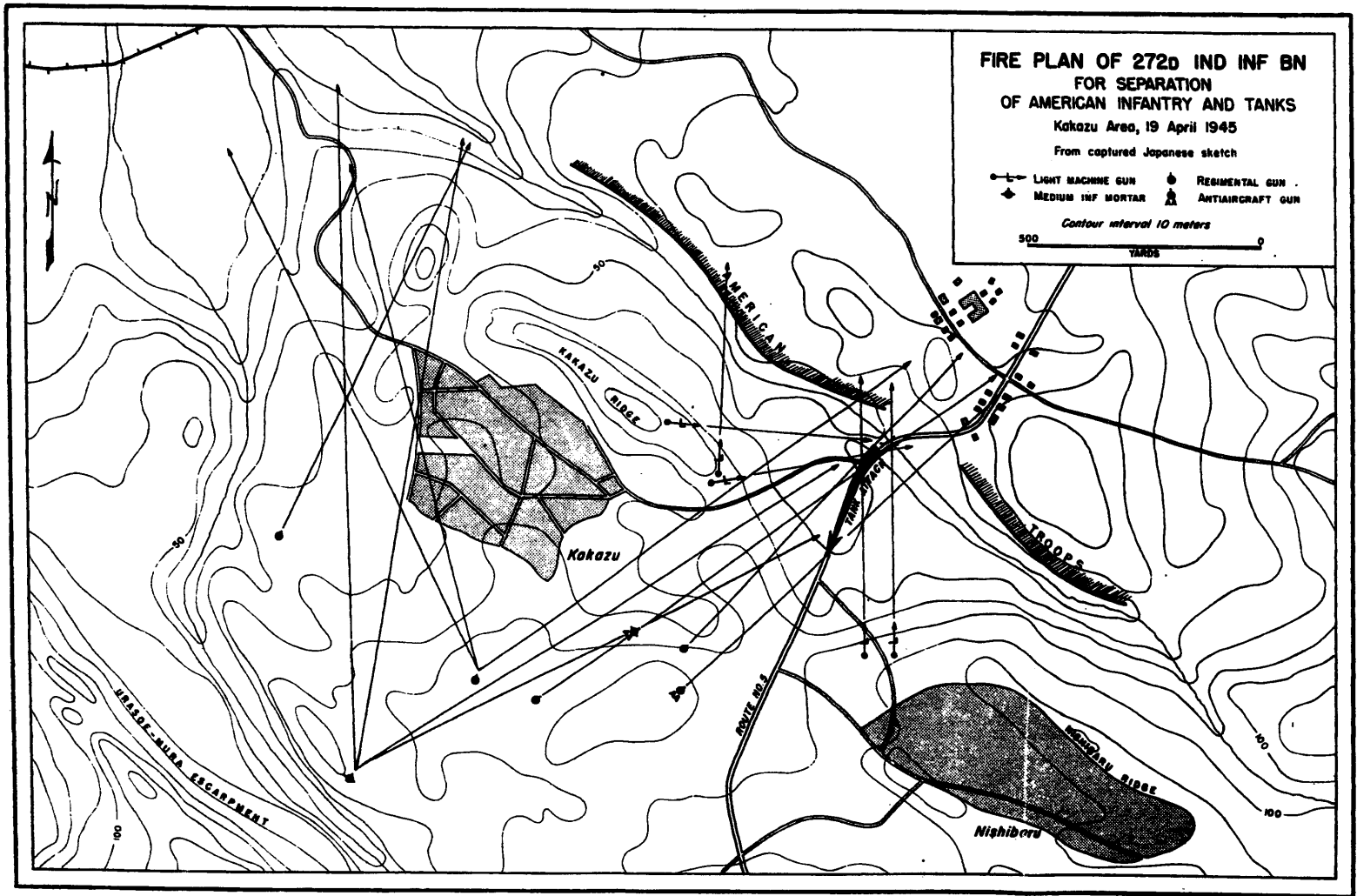


MAP. NO. 14

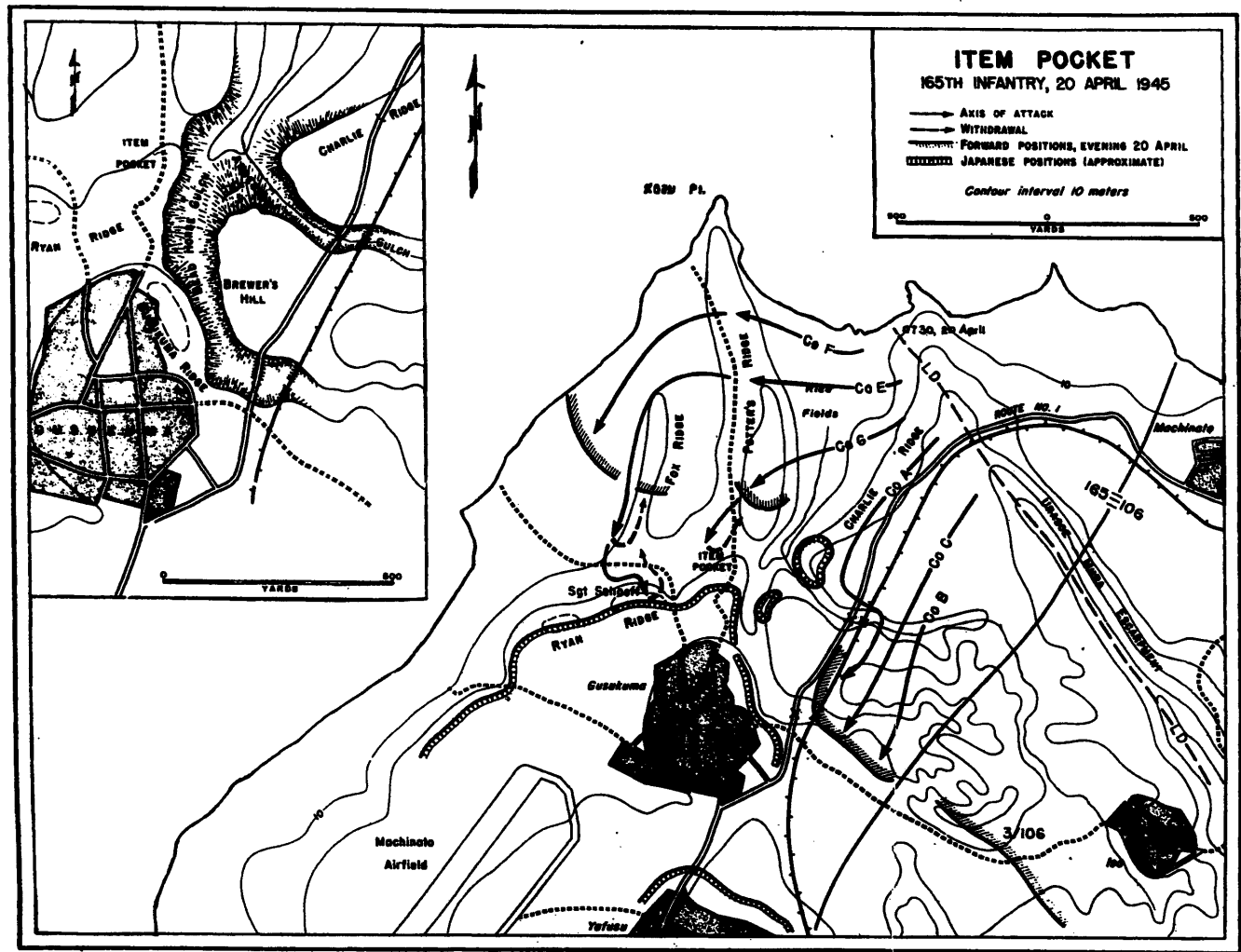


EAST
CHINA
SEA

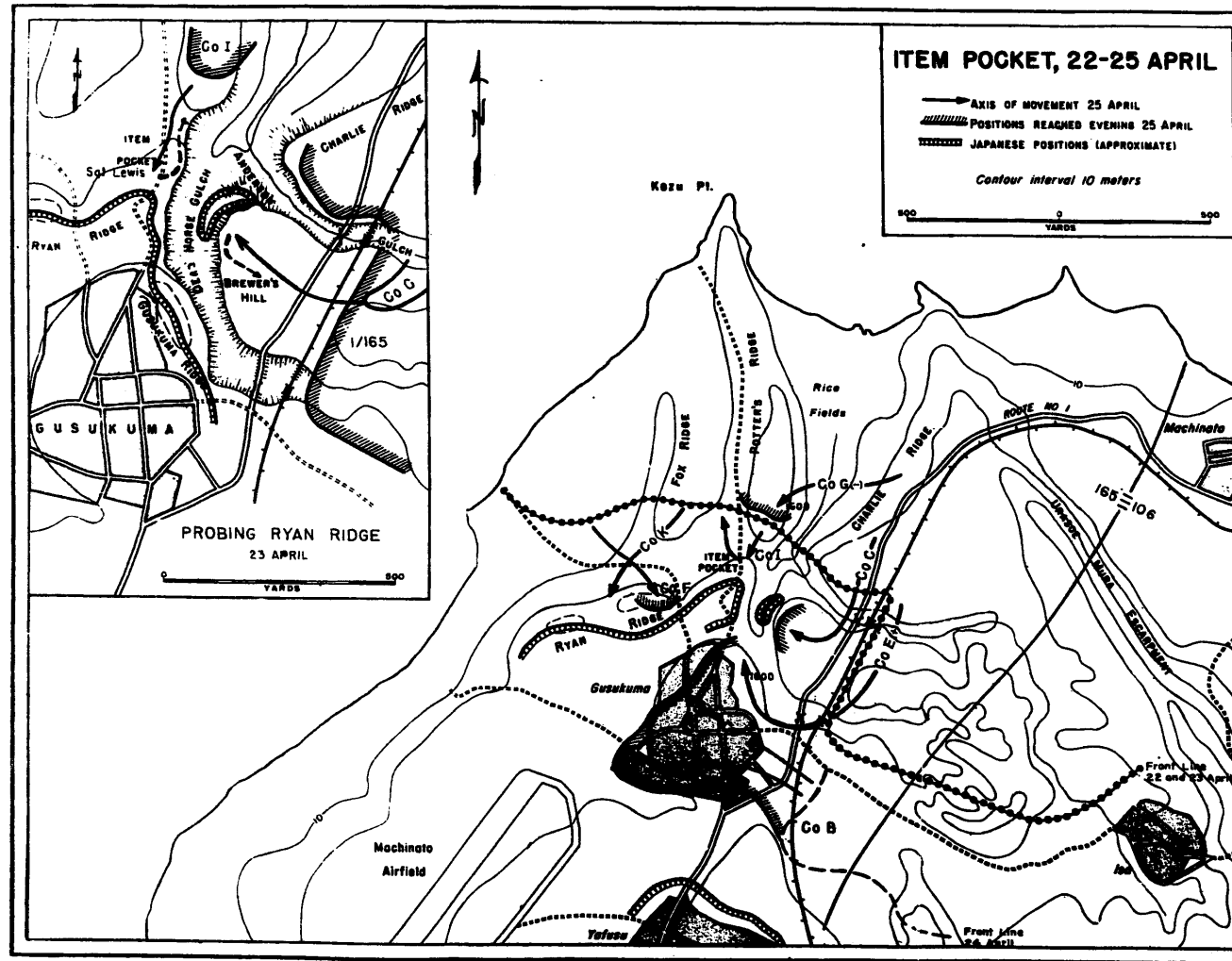
BUCKNER BAY



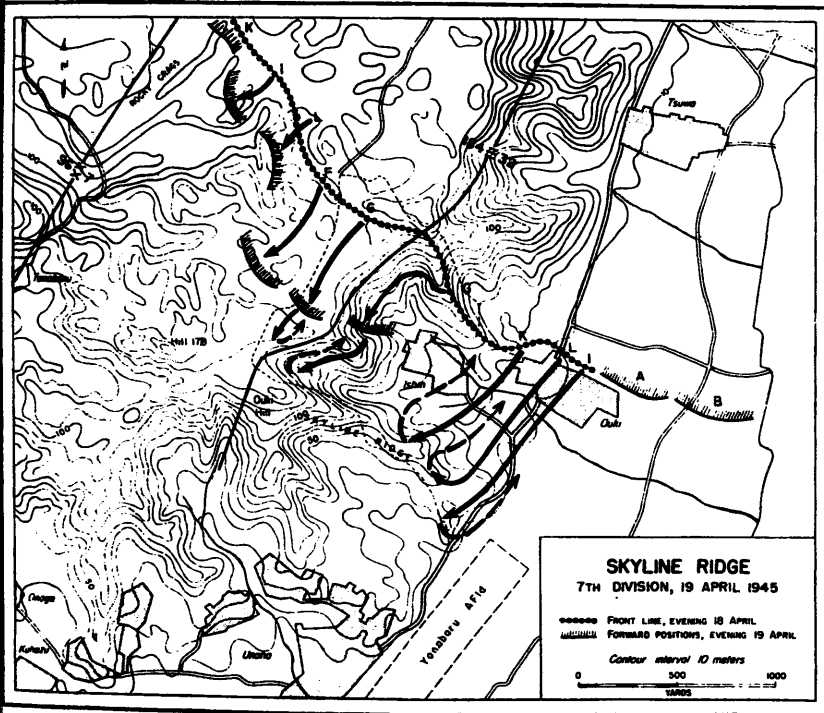
MAP. NO. 16



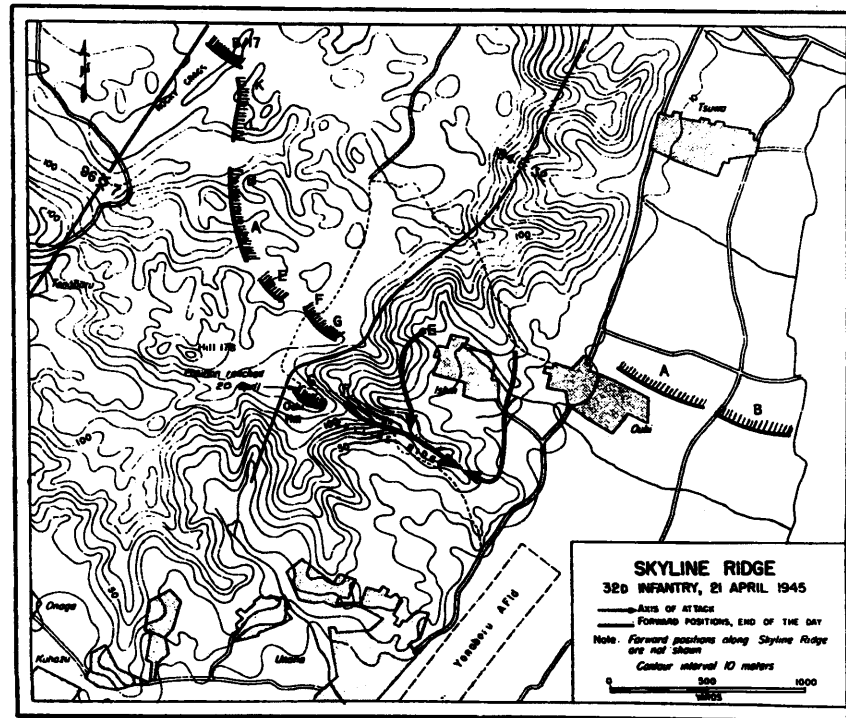
MAP. NO. 17



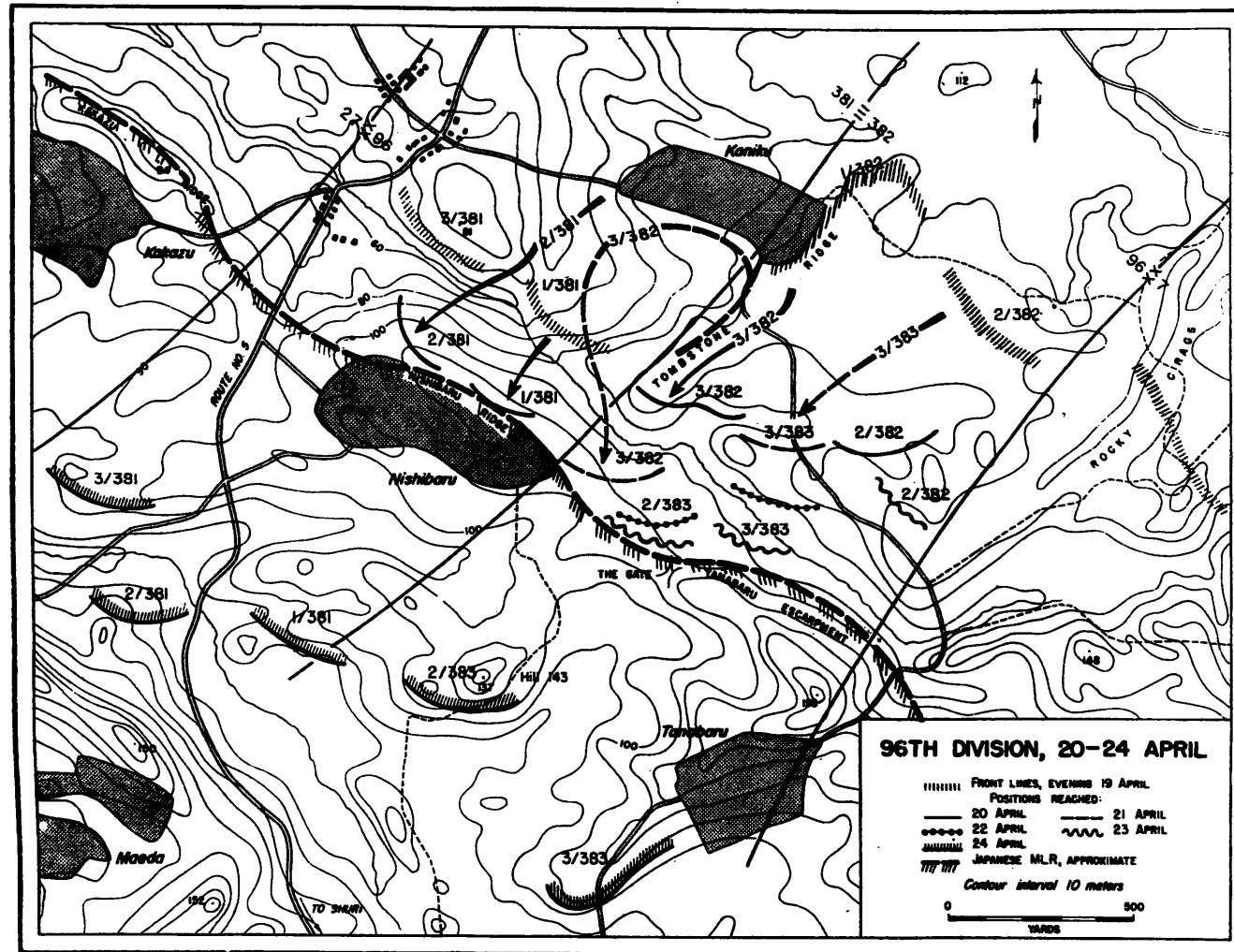
MAP. NO. 19



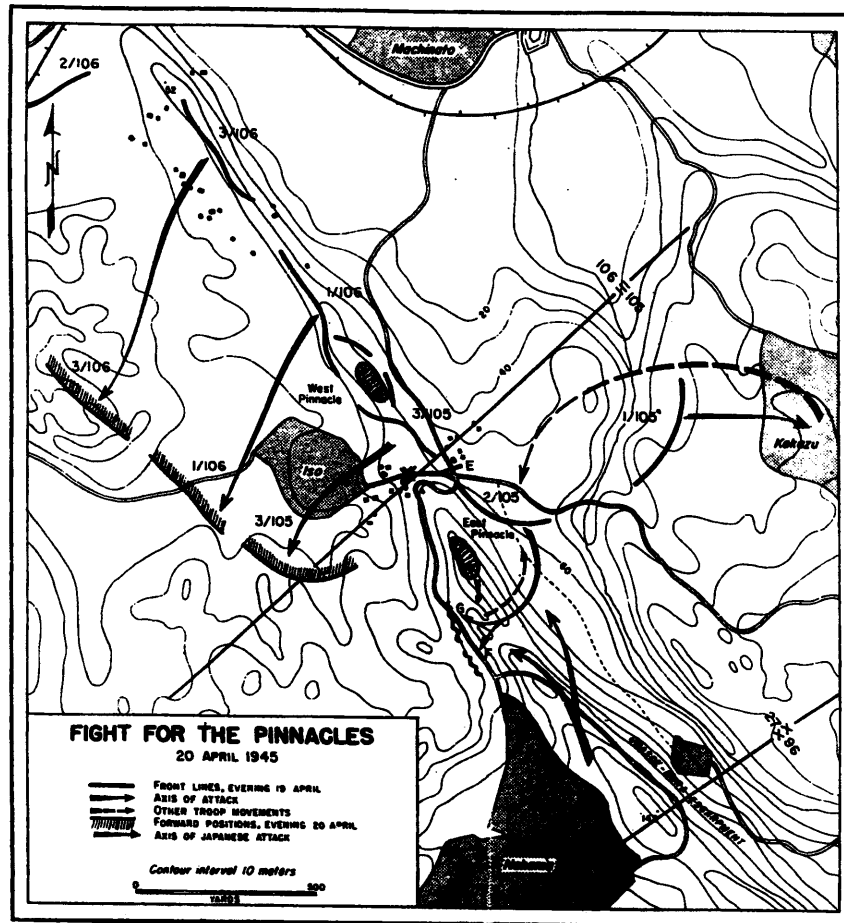
MAP. NO. 20



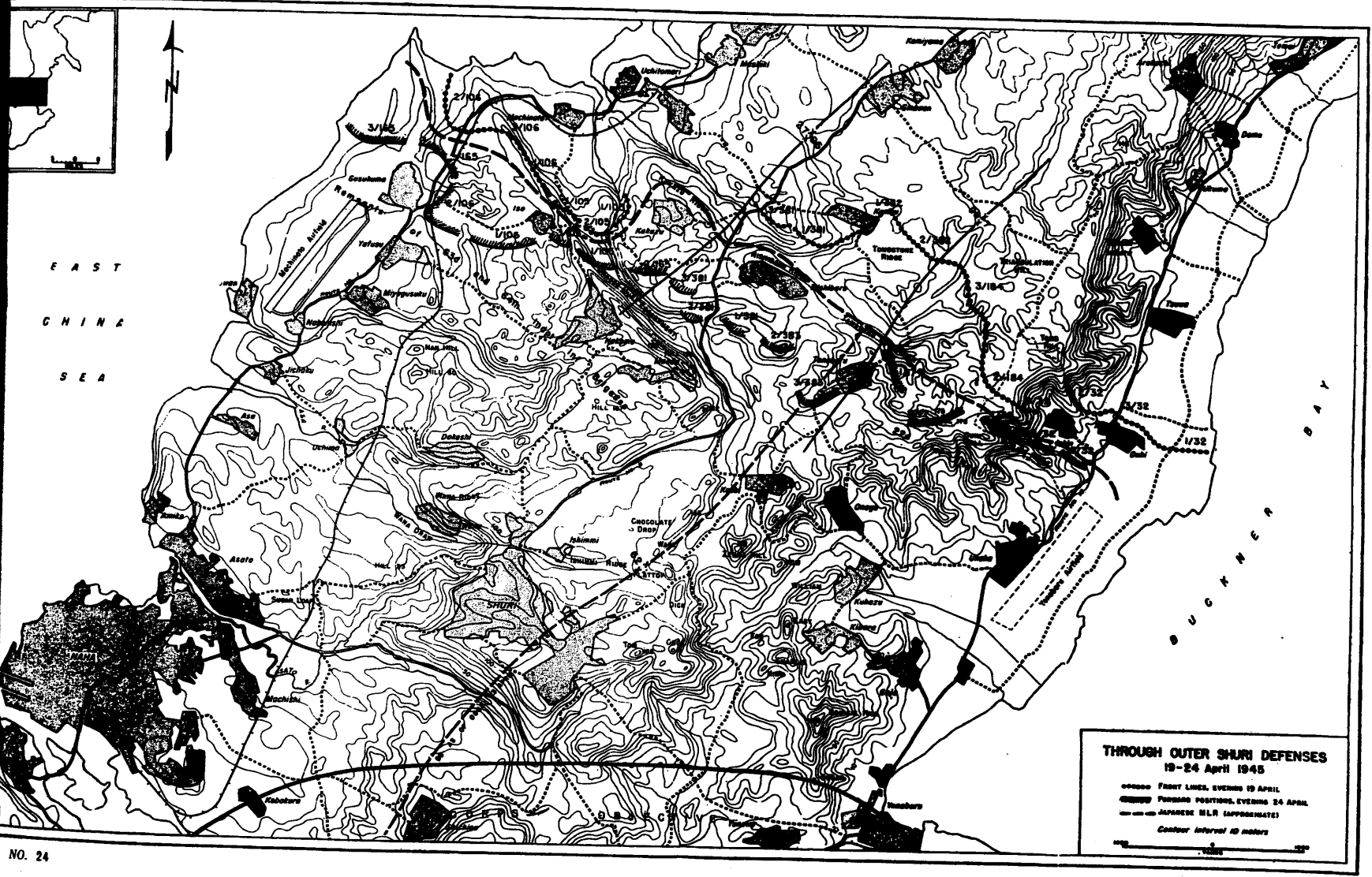
MAP. NO. 21



MAP. NO. 22

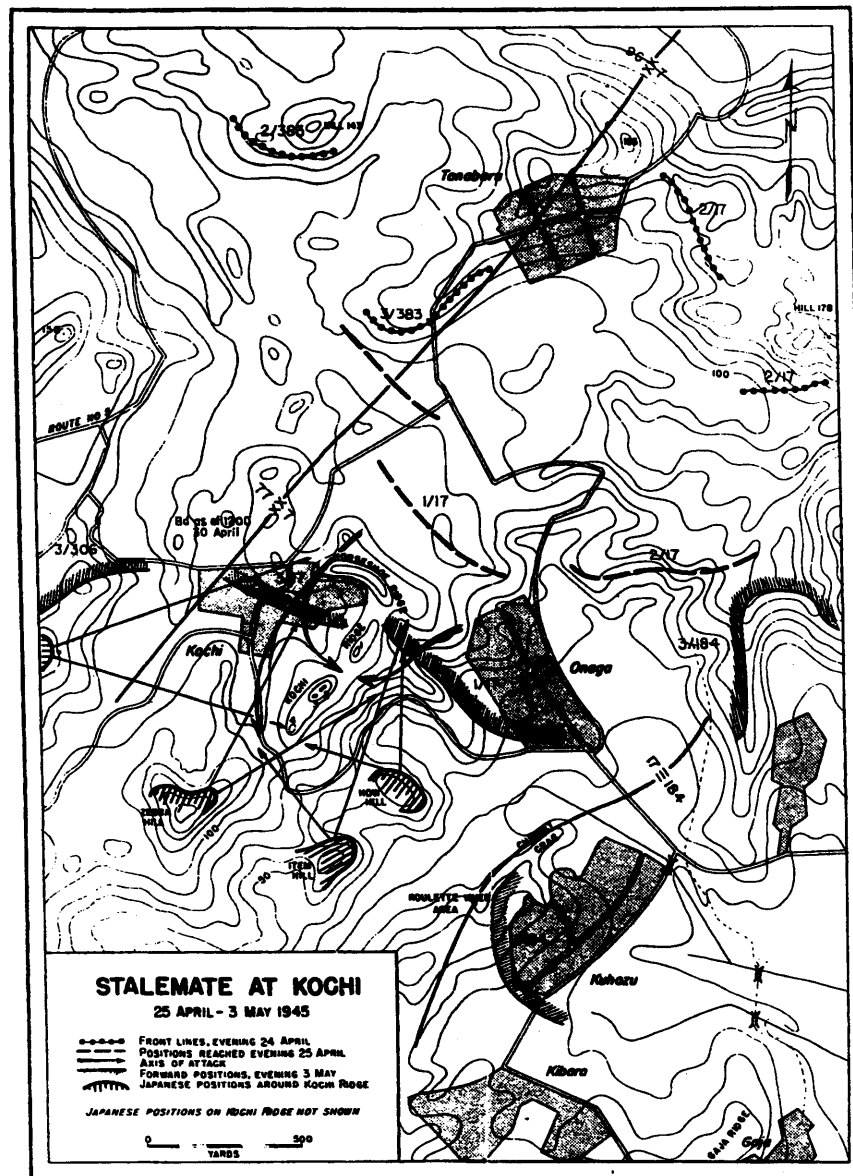


MAP. NO. 23

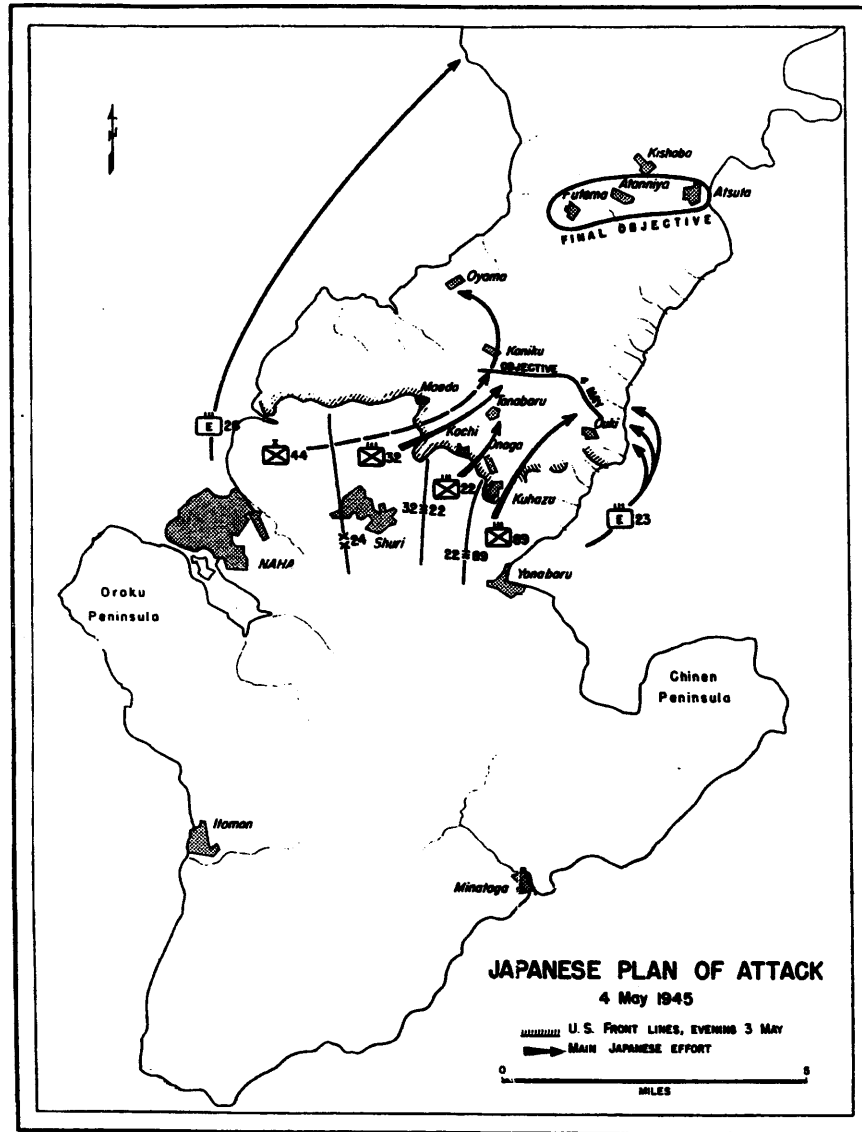


EAST
CHINA
SEA

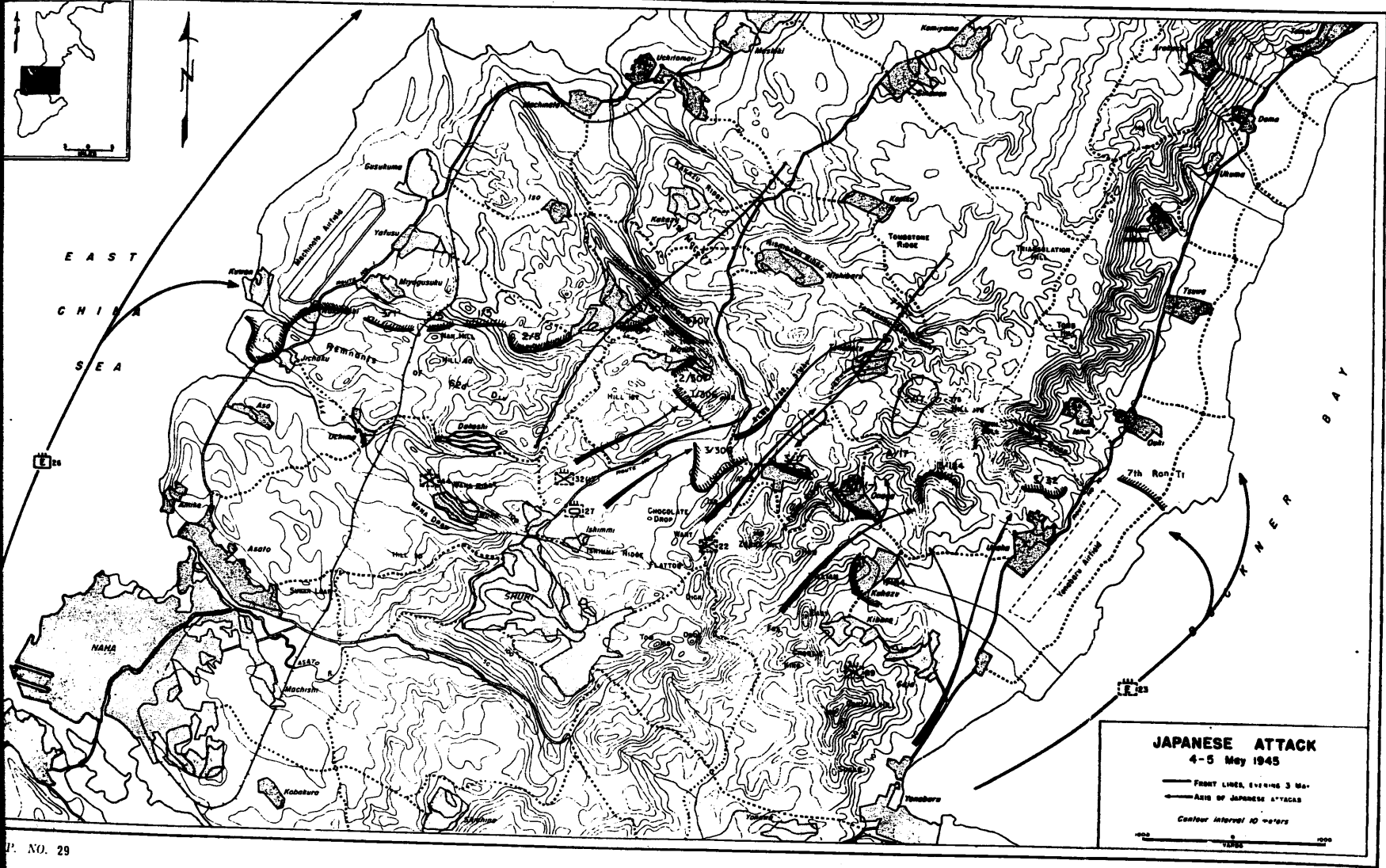
BUGENNE BAY



MAP. NO. 25



MAP. NO. 28



JAPANESE ATTACK
 4-5 May 1945

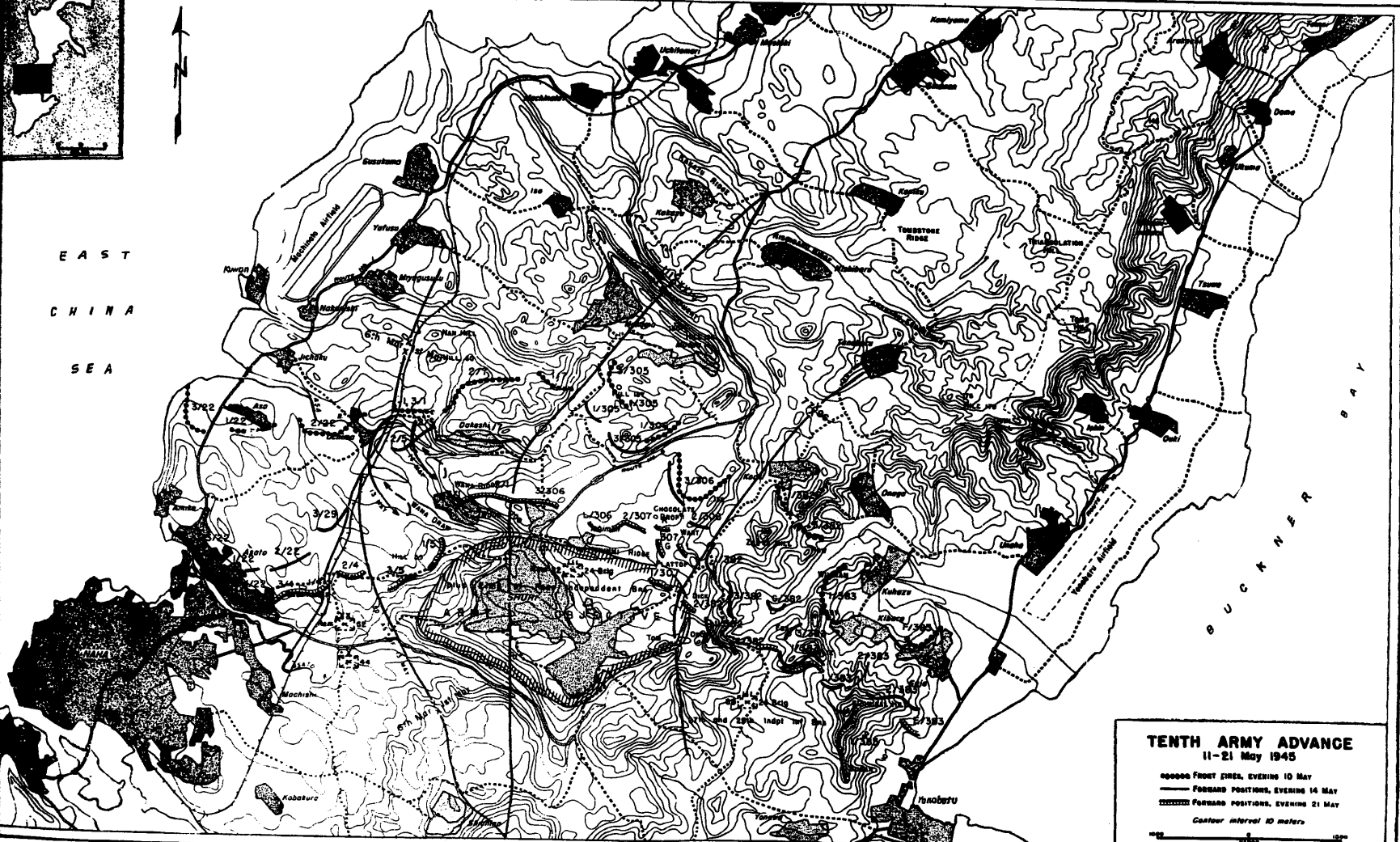
— FRONT LINES, EVENING 3 MAY
 — AXIS OF JAPANESE ATTACKS

Contour interval 10 meters

0 1000 2000



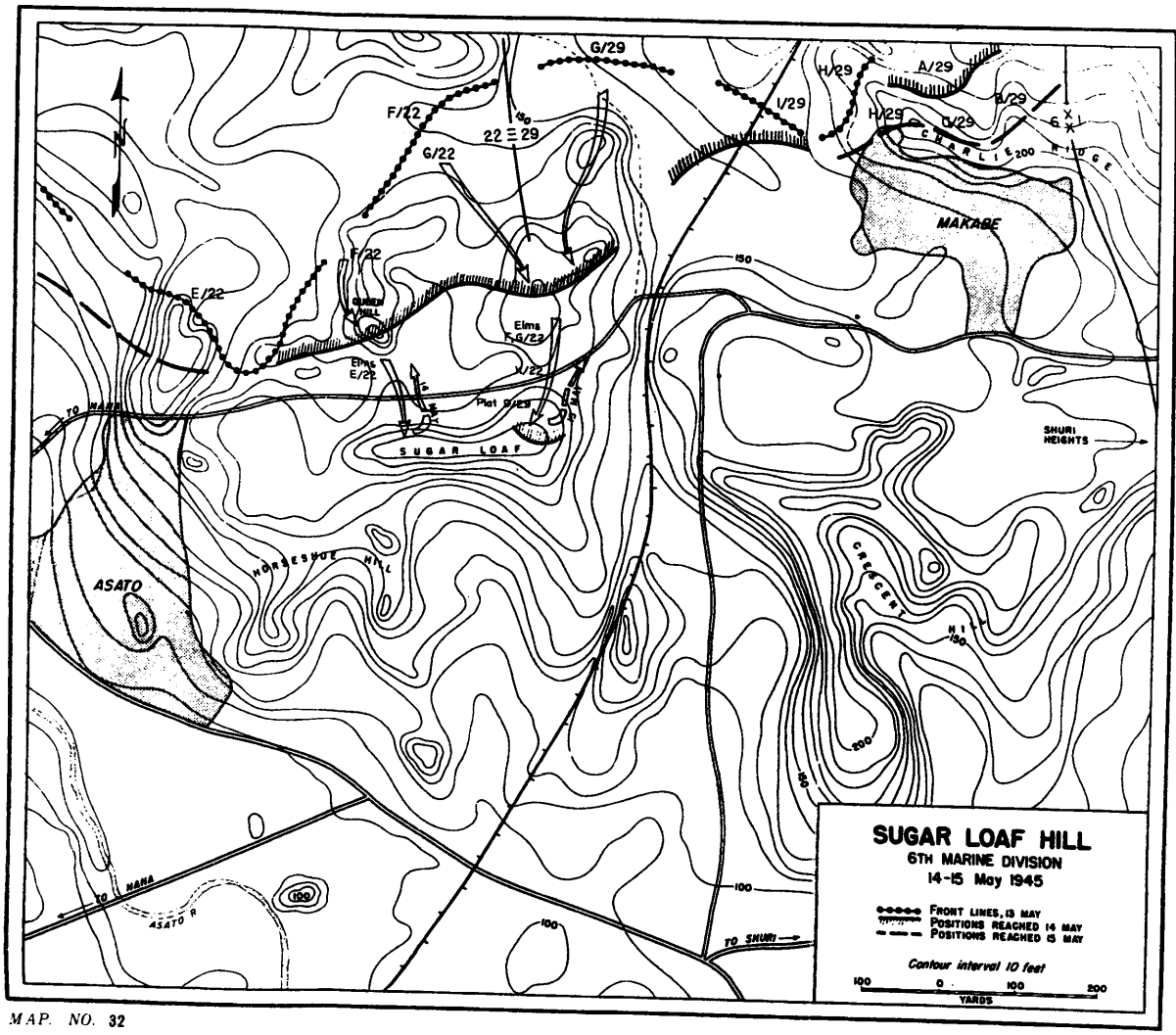
EAST
CHINA
SEA



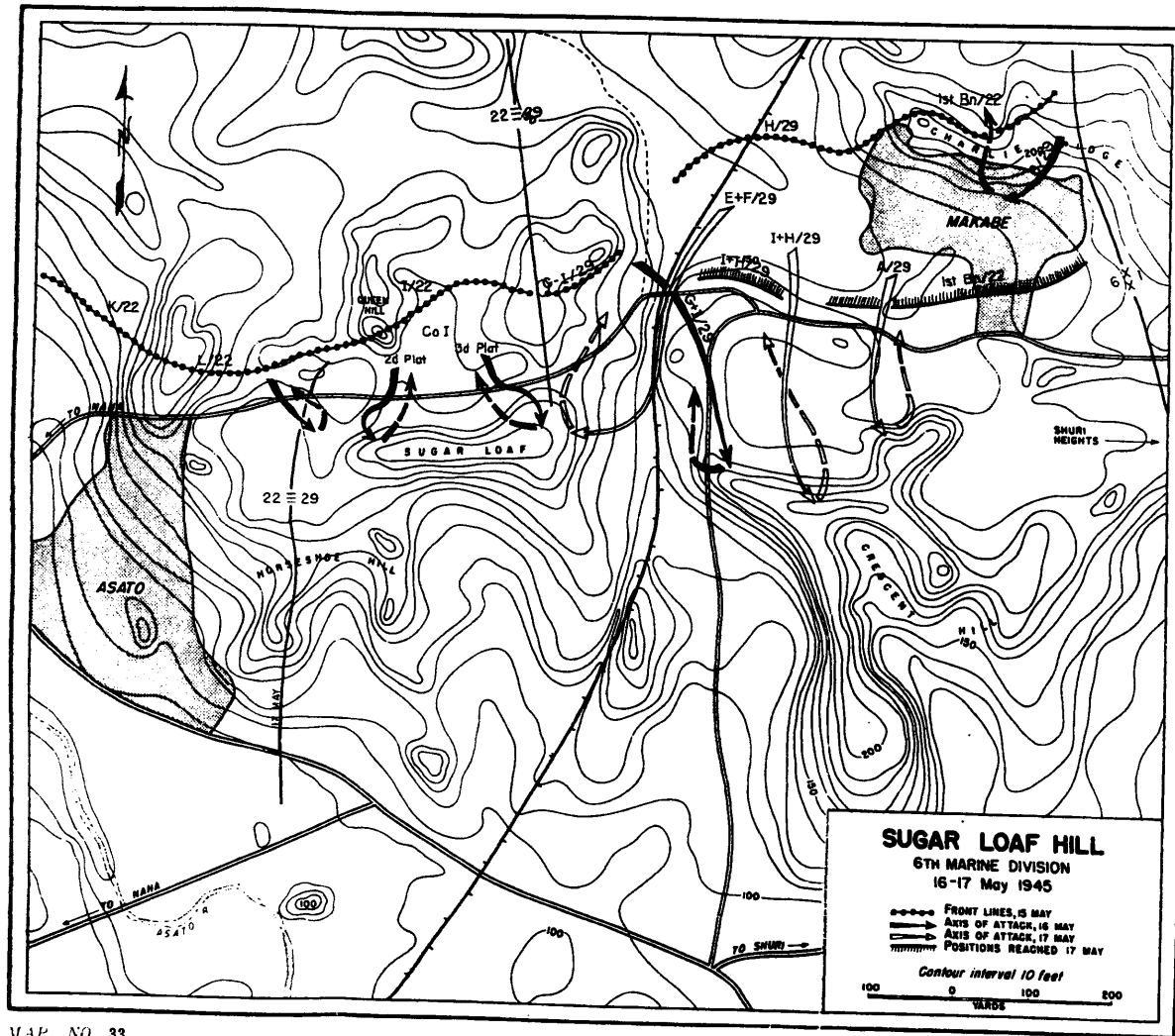
TENTH ARMY ADVANCE
11-21 May 1945

FORWARD POSITIONS, EVENING 10 MAY
 FORWARD POSITIONS, EVENING 14 MAY
 FORWARD POSITIONS, EVENING 21 MAY
 Contour Interval 10 meters

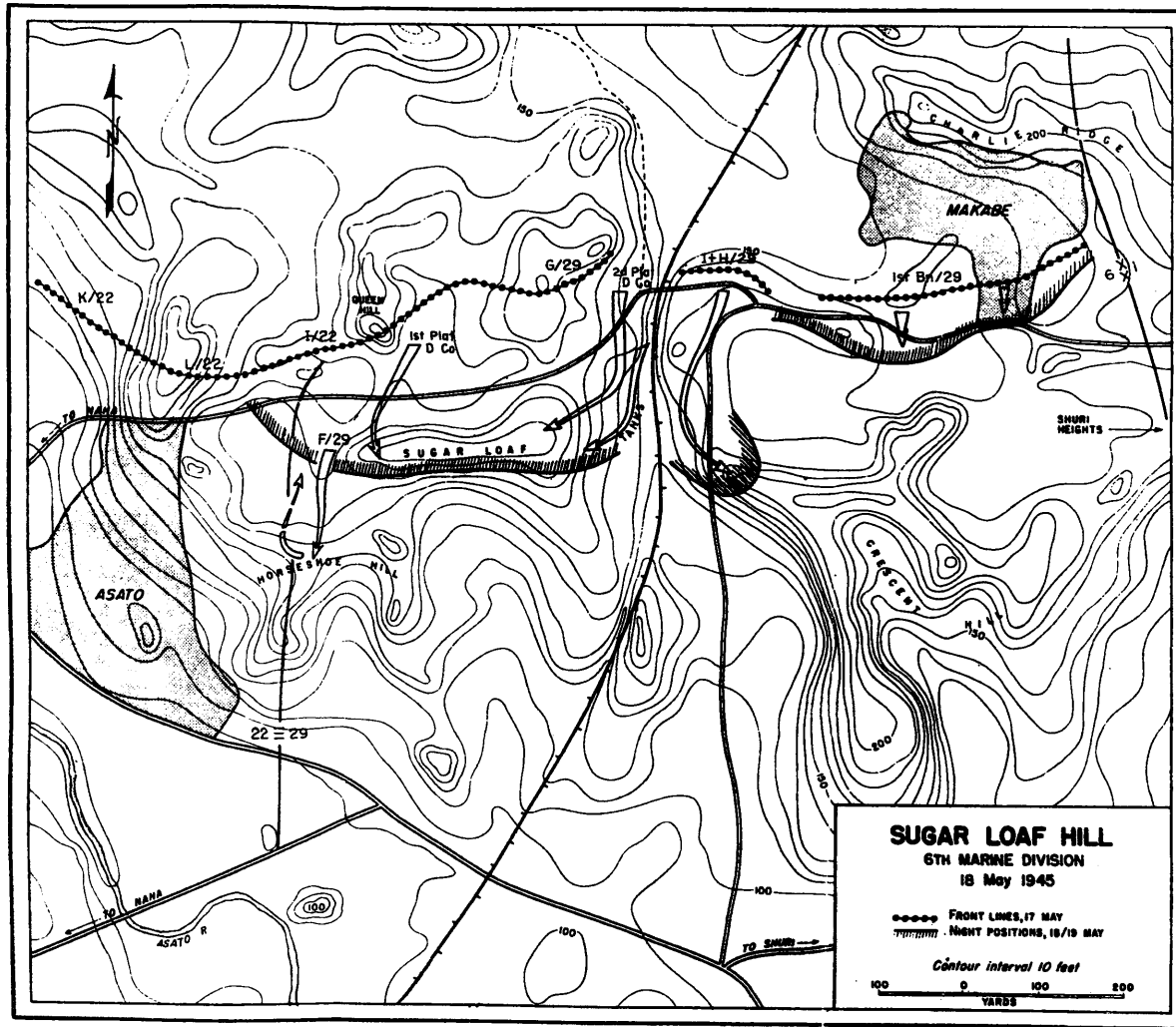
MAP NO. 31



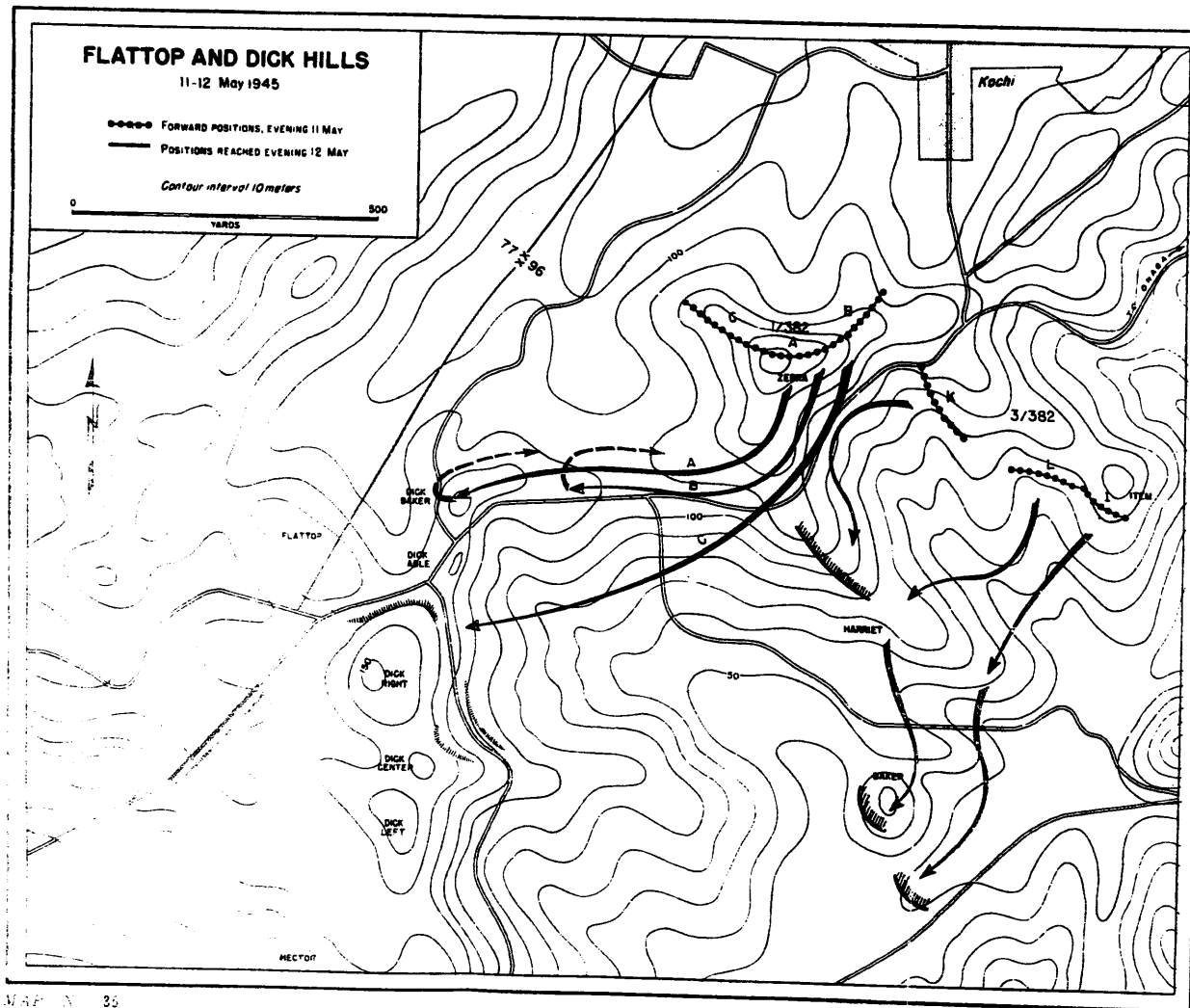
MAP. NO. 32

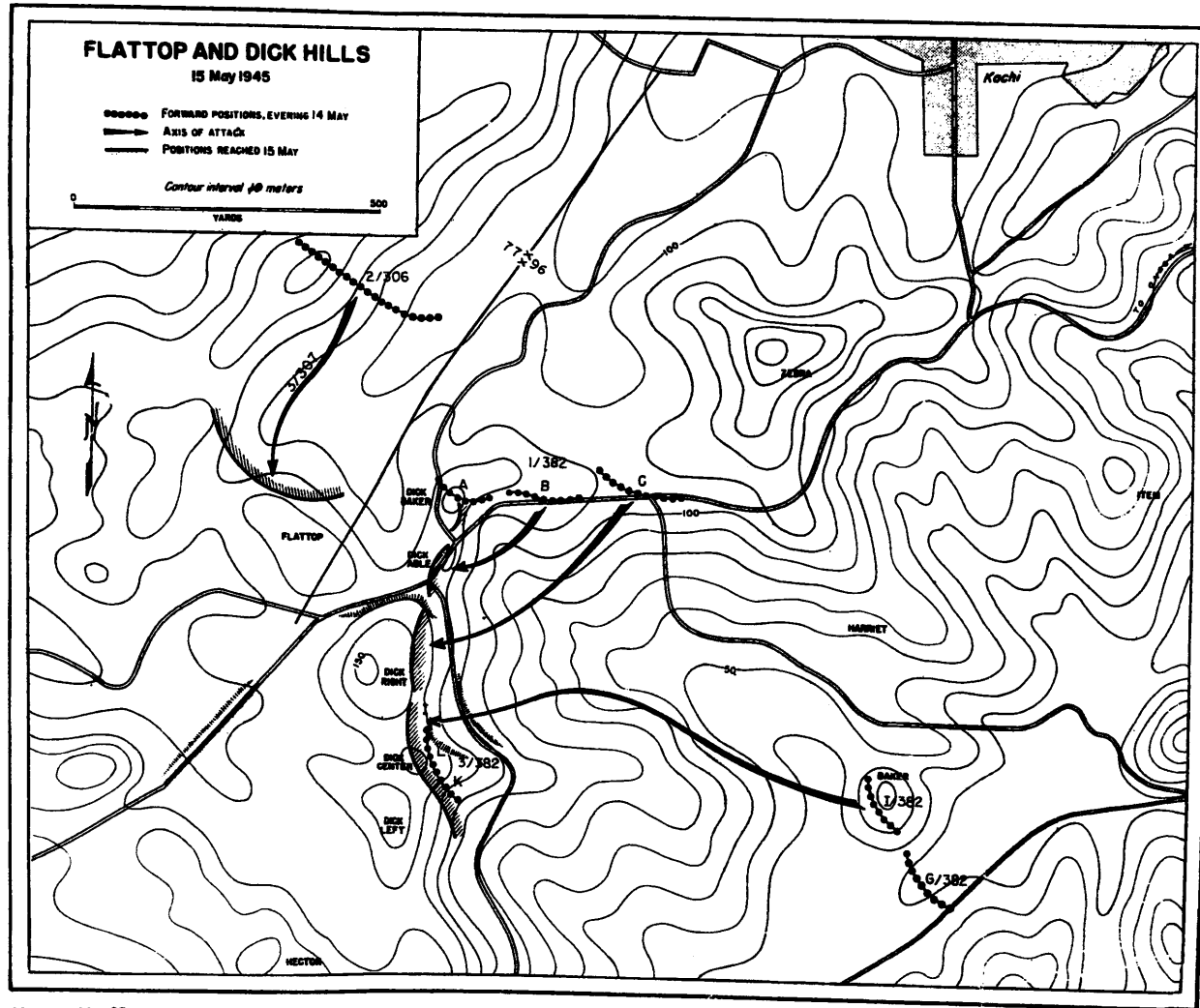


MAP. NO. 33

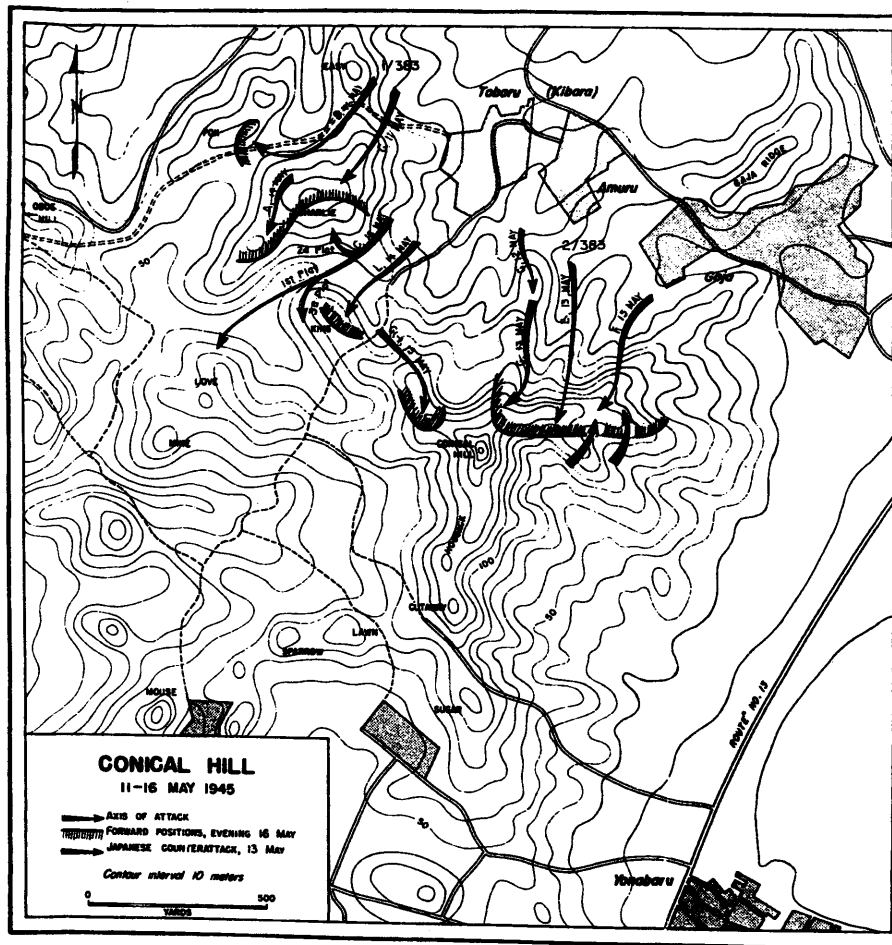


MAP. NO. 34

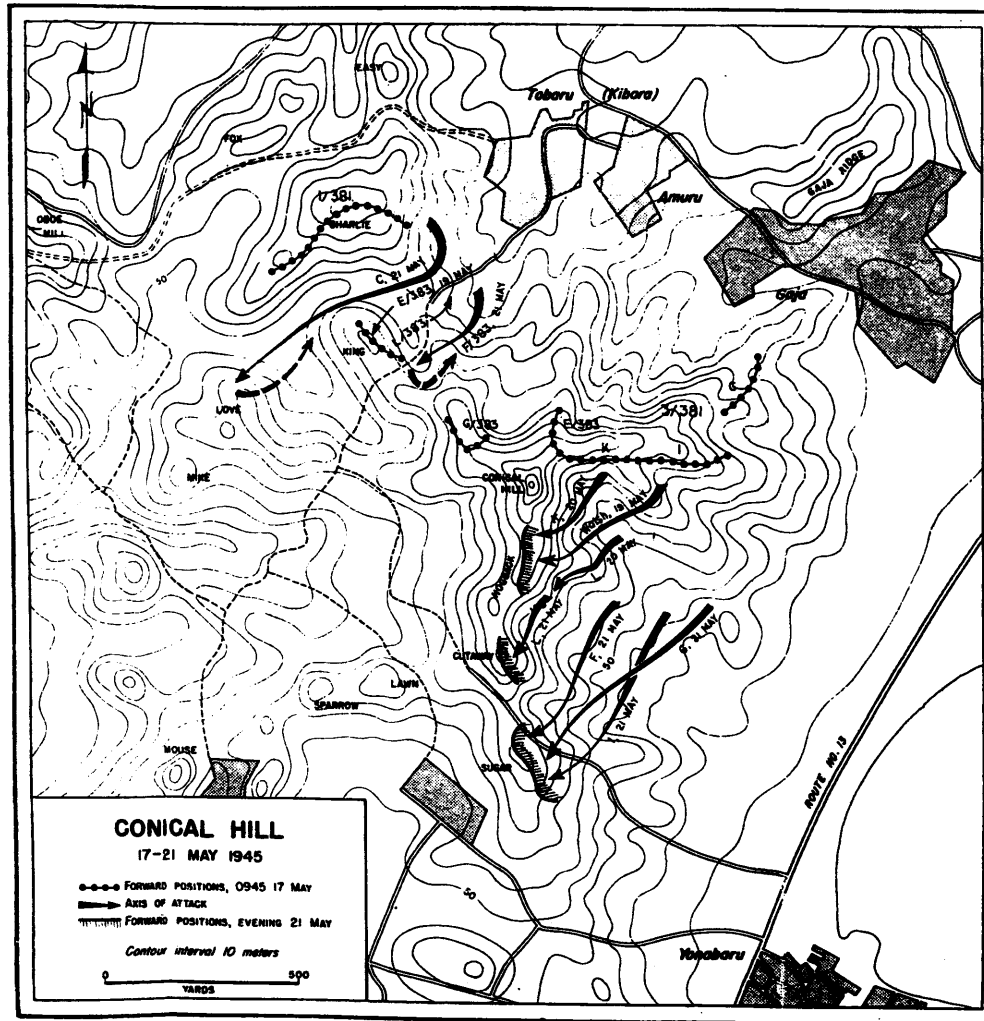




MAP. NO. 37



MAP. NO. 38



MAP. NO. 39



電子複写不可