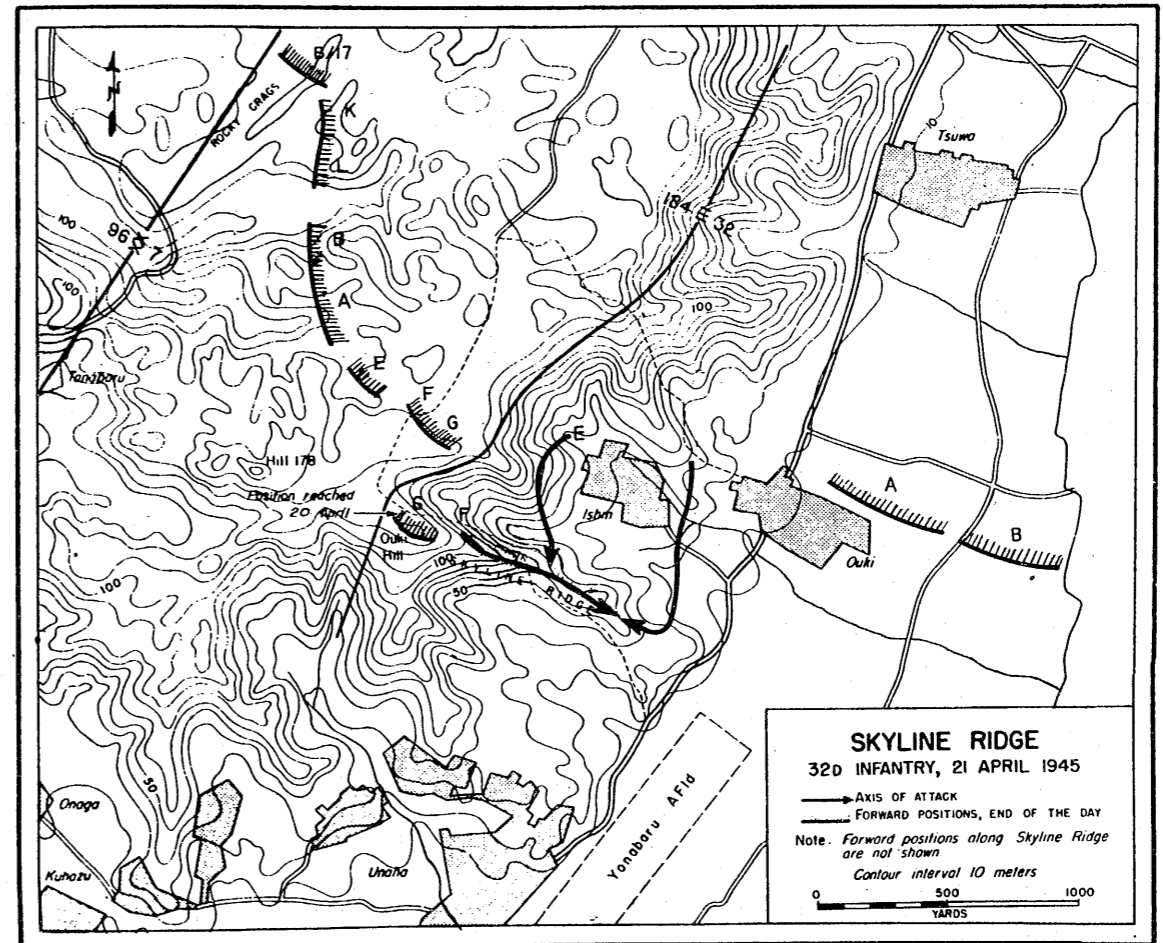
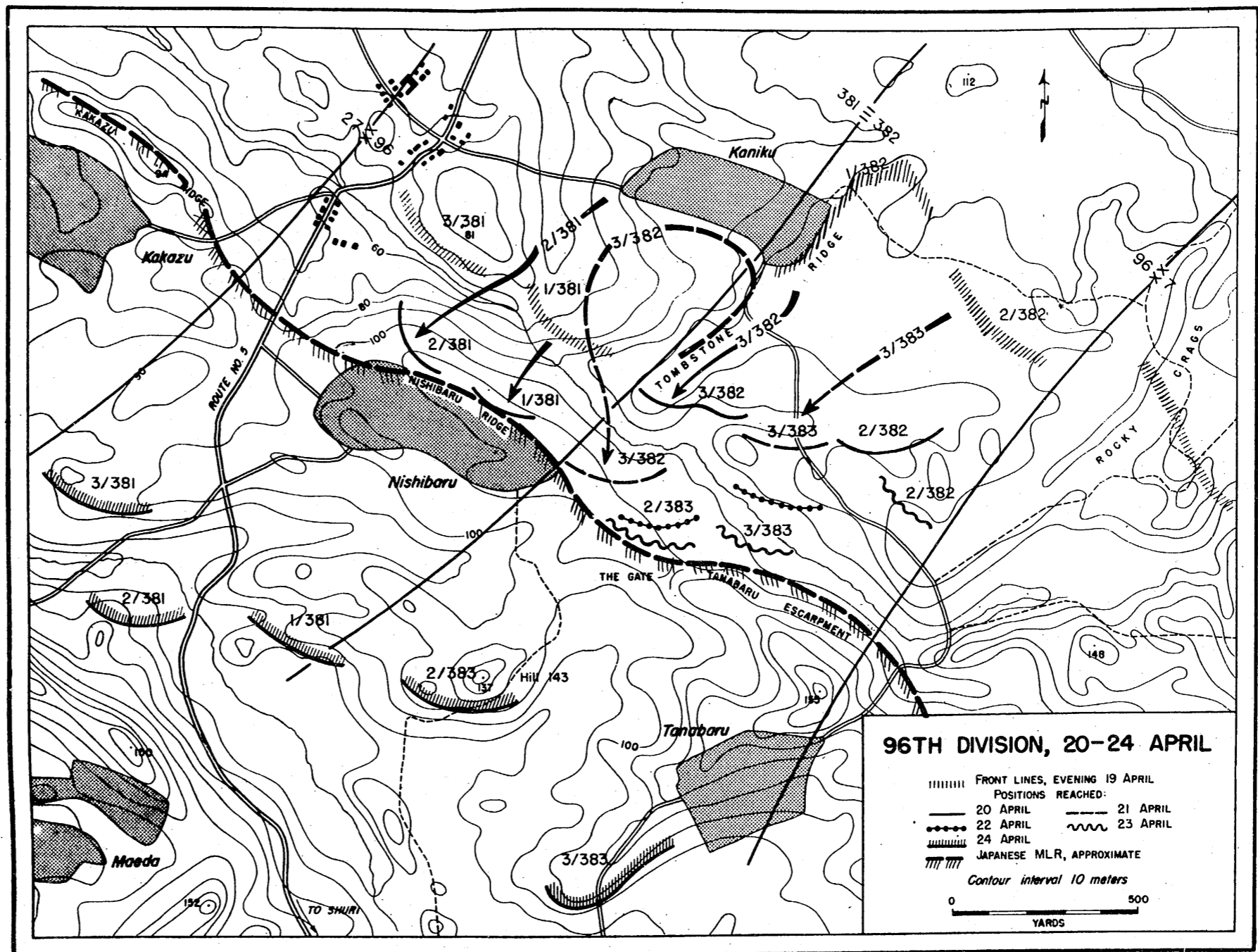


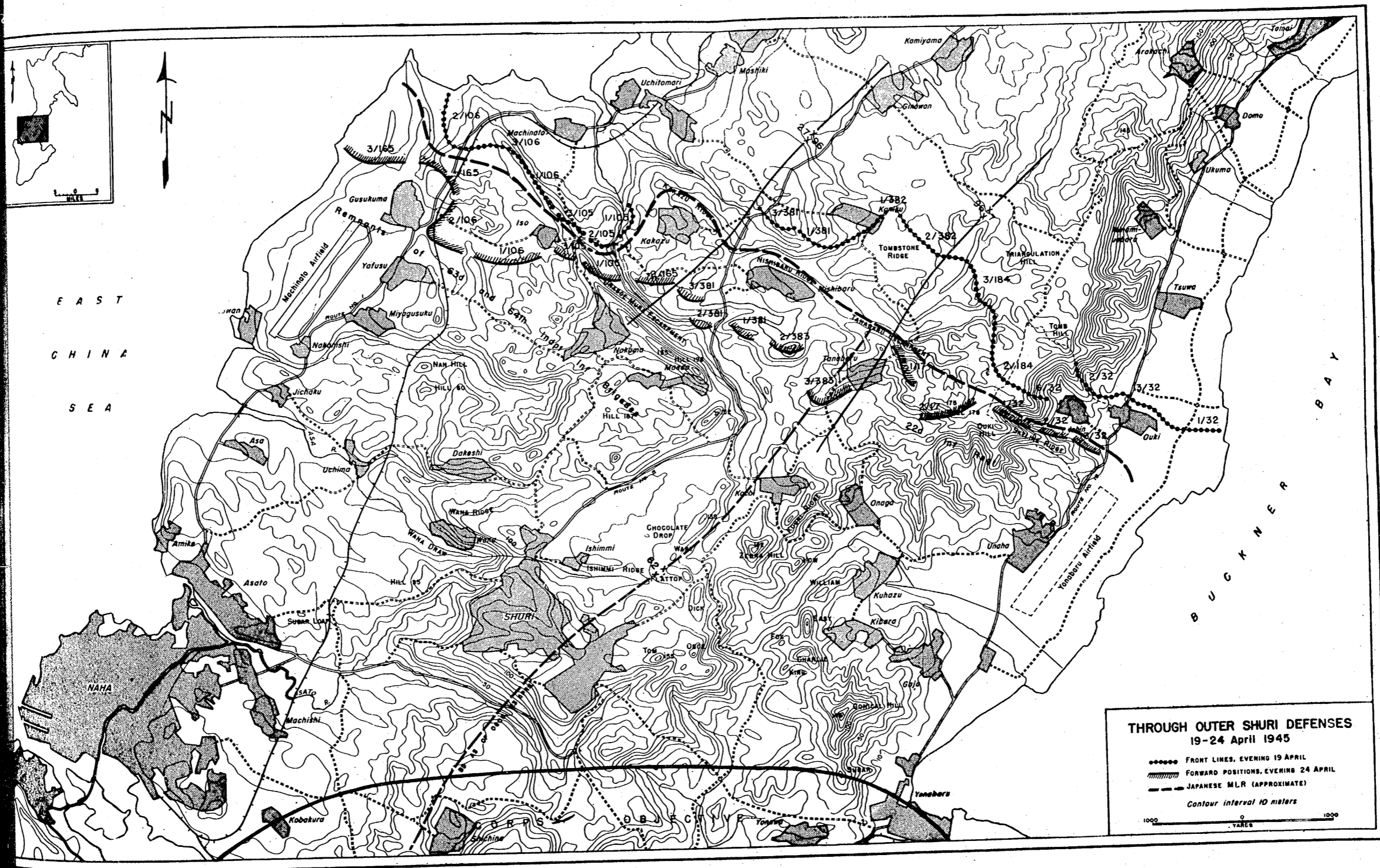
MAP. NO. 20



MAP. NO. 21



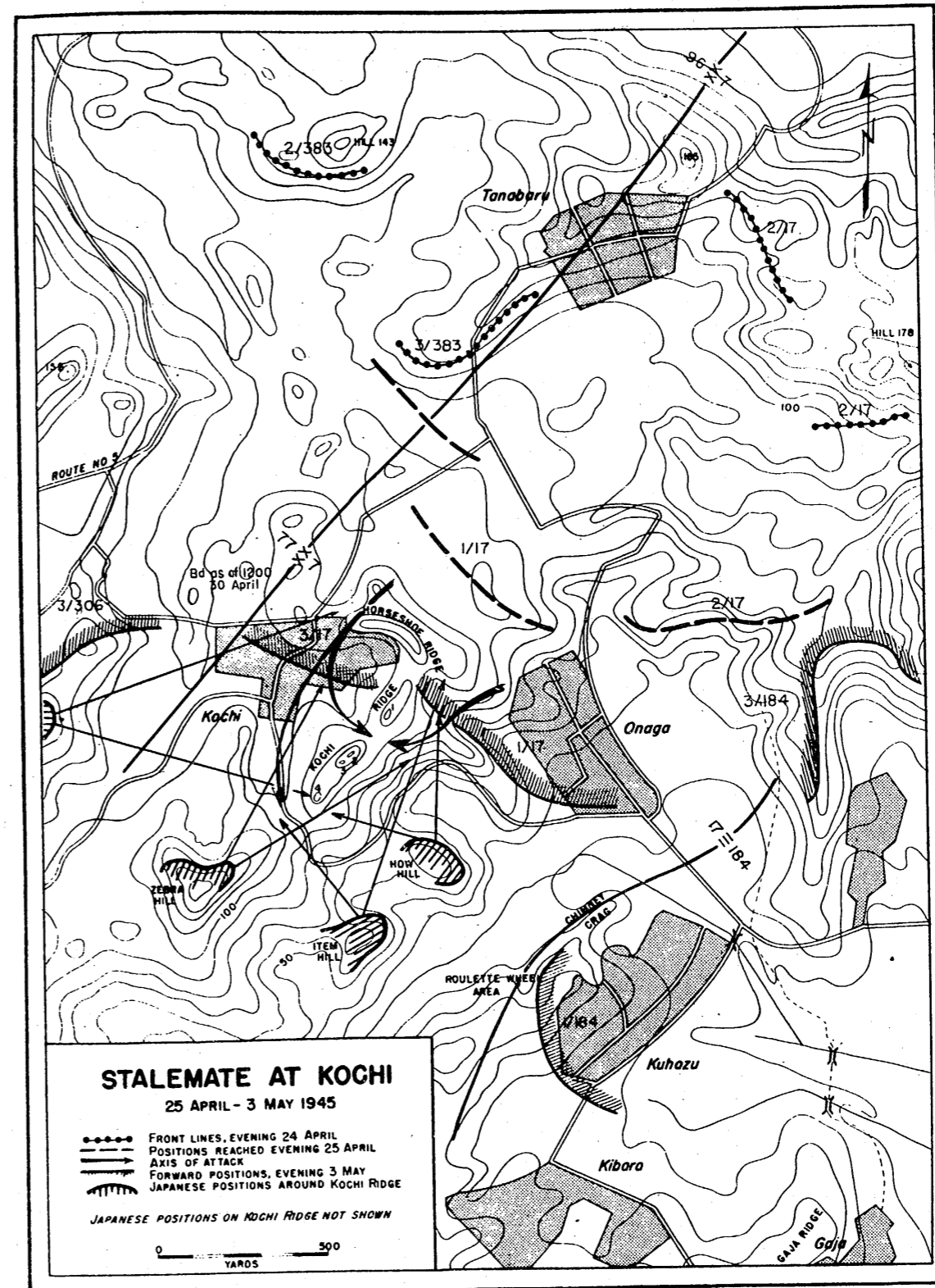
MAP. NO. 22



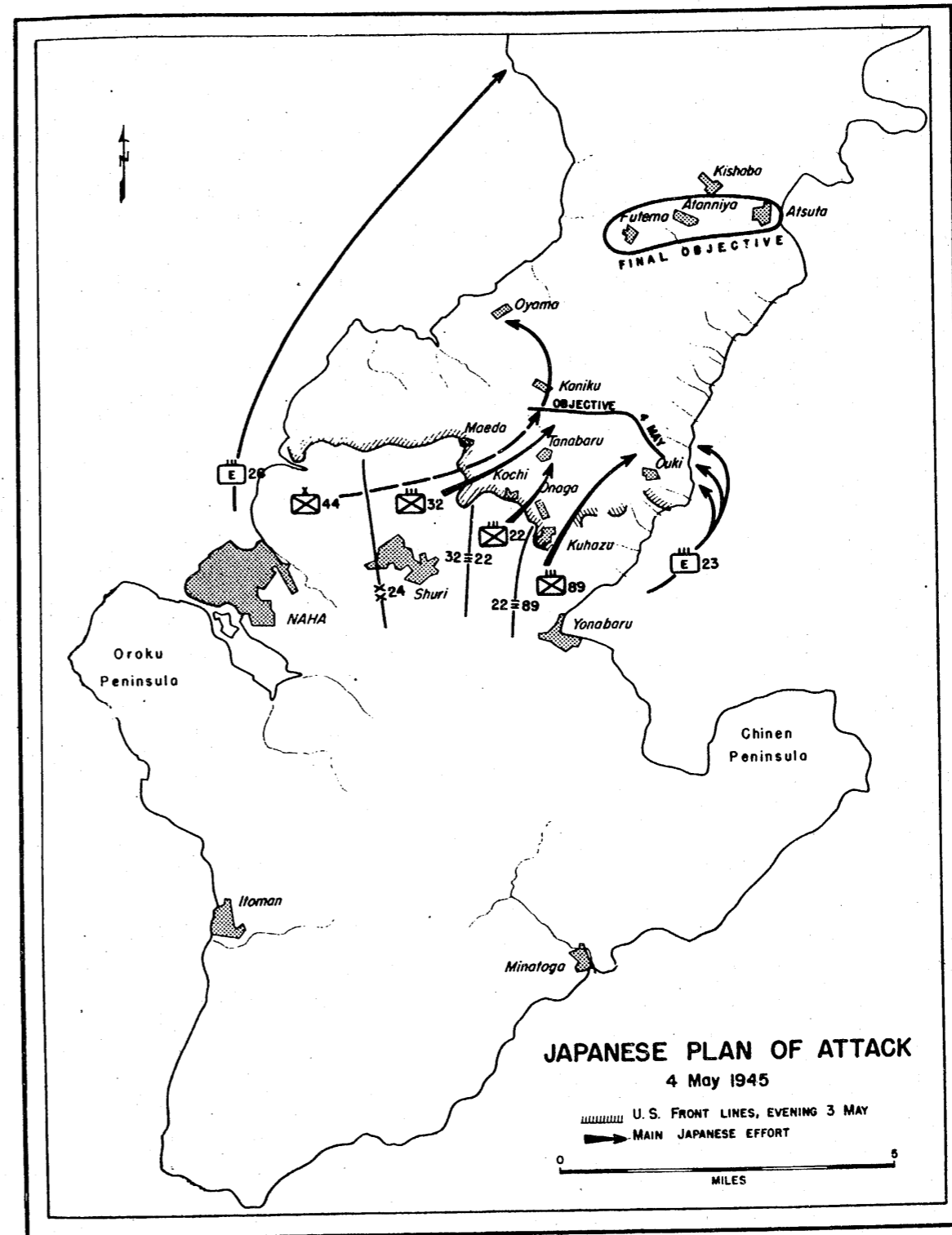
E A S T
C H I N A
S E A

THROUGH OUTER SHURI DEFENSES
19-24 April 1945

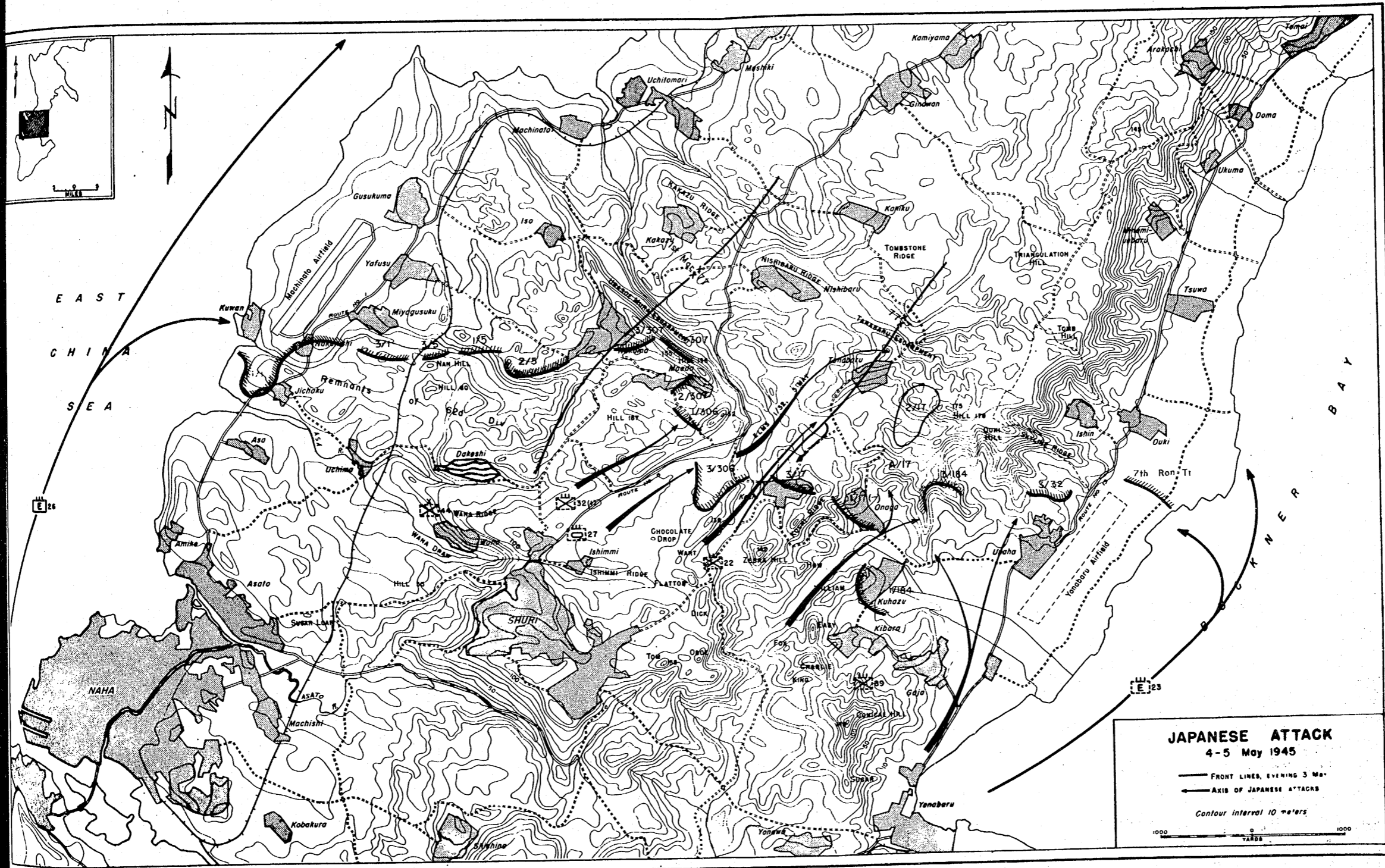
..... FRONT LINES, EVENING 19 APRIL
 _____ FORWARD POSITIONS, EVENING 24 APRIL
 - - - - - JAPANESE M.L.R. (APPROXIMATE)
 Contour interval 10 meters
 1000 0 1000
 METERS



MAP. NO. 25



MAP. NO. 28

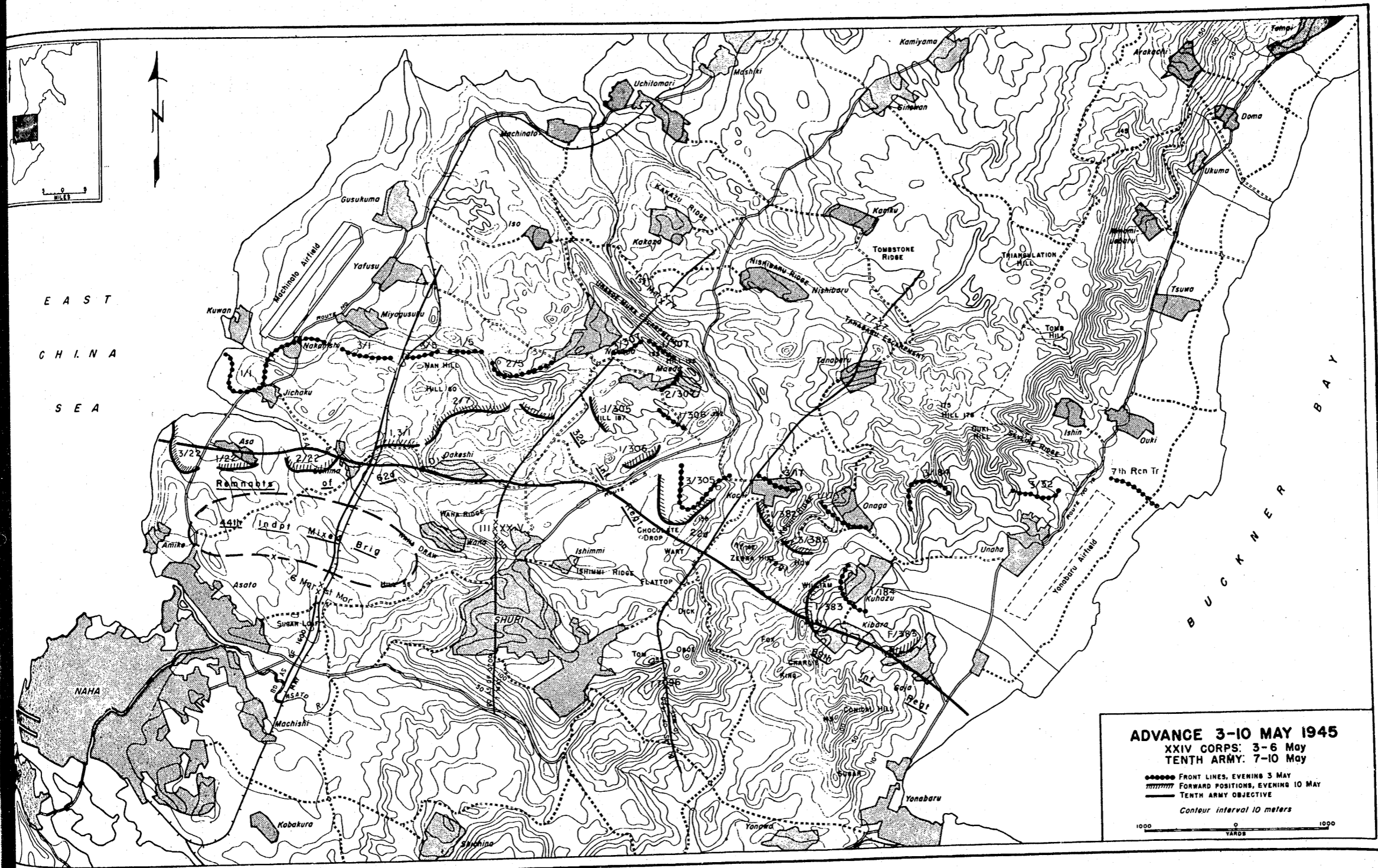


JAPANESE ATTACK
 4-5 May 1945

— FRONT LINES, EVENING 3 Ma—
 — AXIS OF JAPANESE ATTACKS

Contour interval 10 meters

1000 0 1000
 YARDS



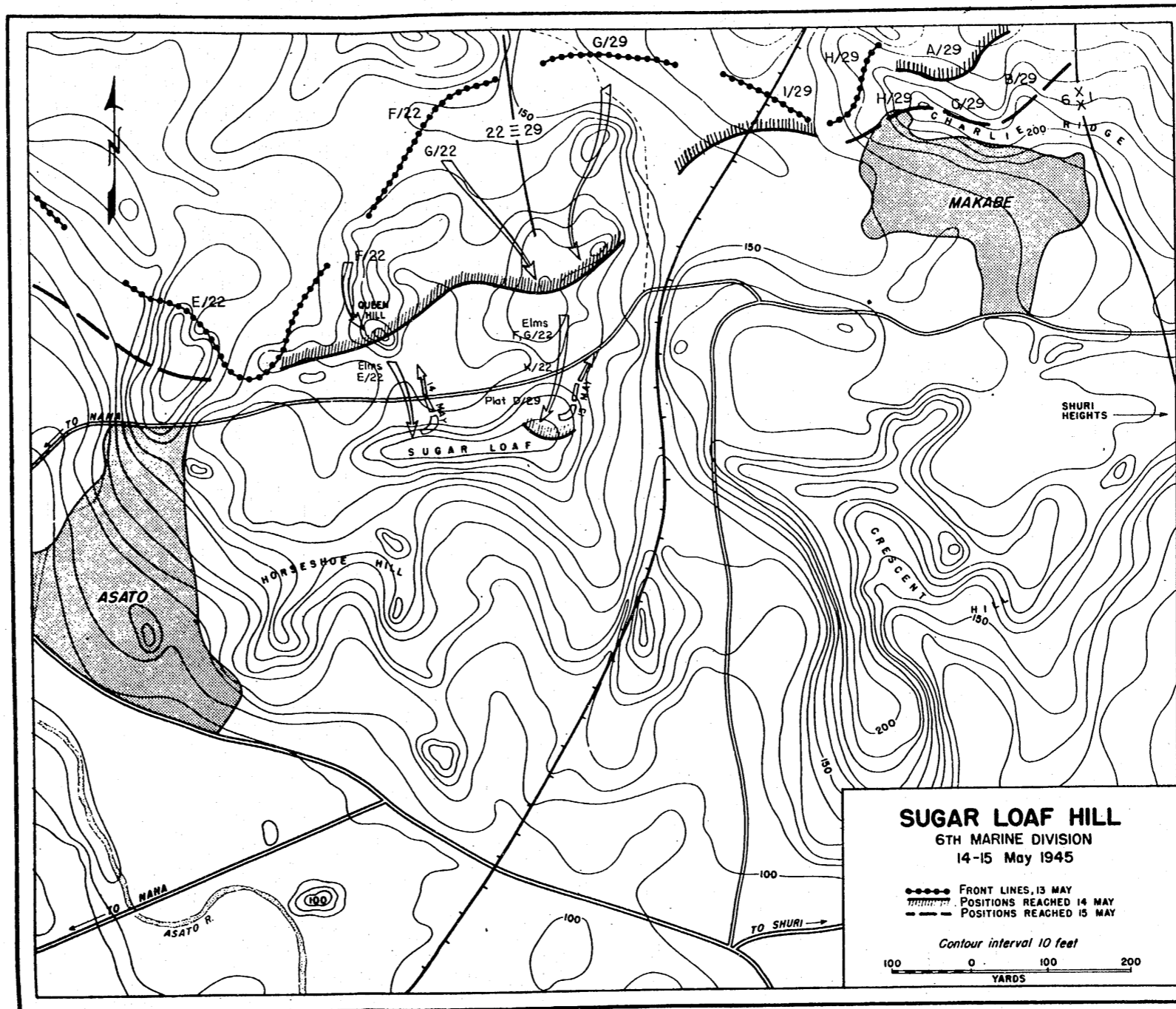
E A S T
C H I N A
S E A

ADVANCE 3-10 MAY 1945
XXIV CORPS: 3-6 May
TENTH ARMY: 7-10 May

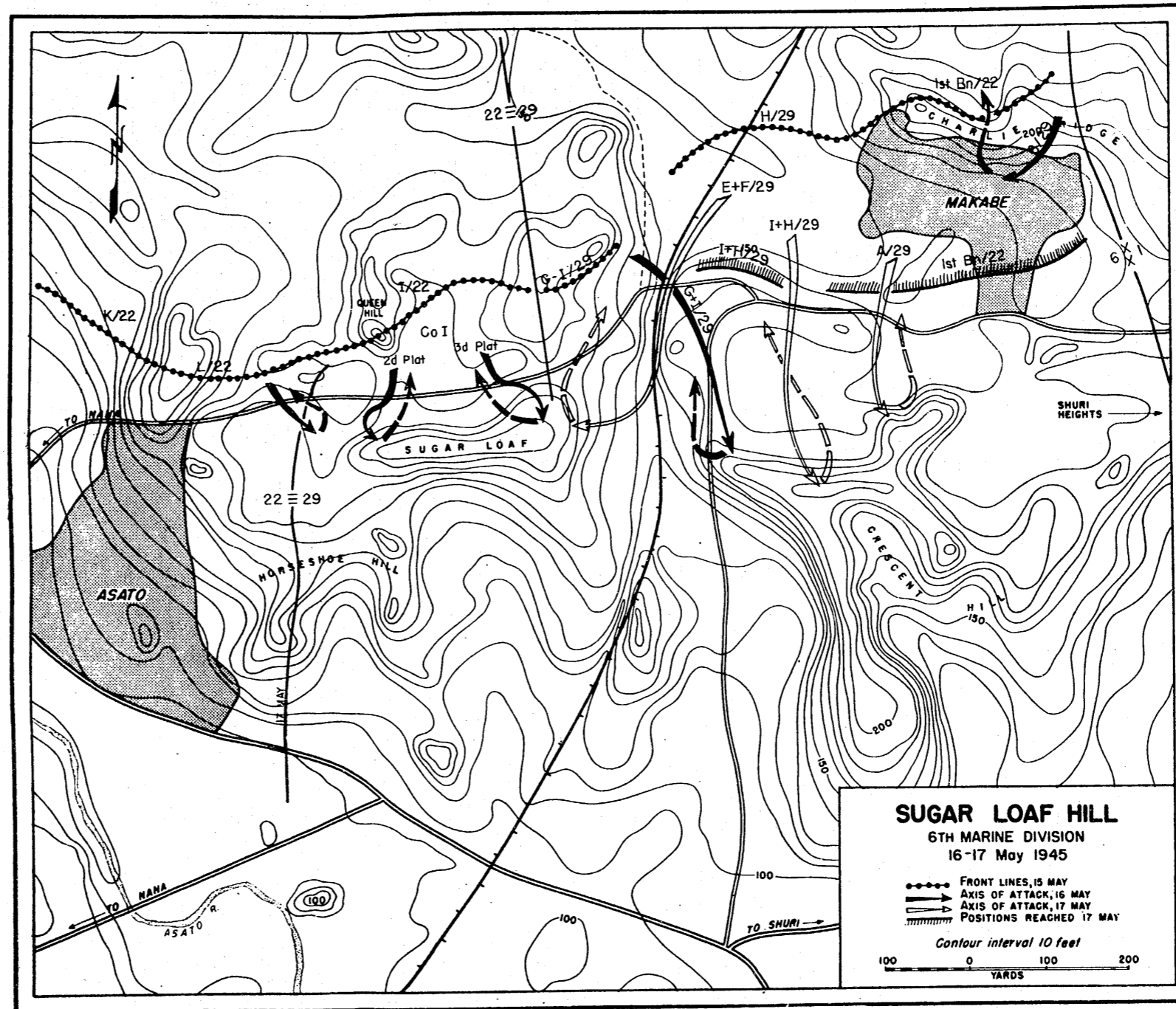
----- FRONT LINES, EVENING 3 MAY
 - - - - - FORWARD POSITIONS, EVENING 10 MAY
 - - - - - TENTH ARMY OBJECTIVE

Contour interval 10 meters

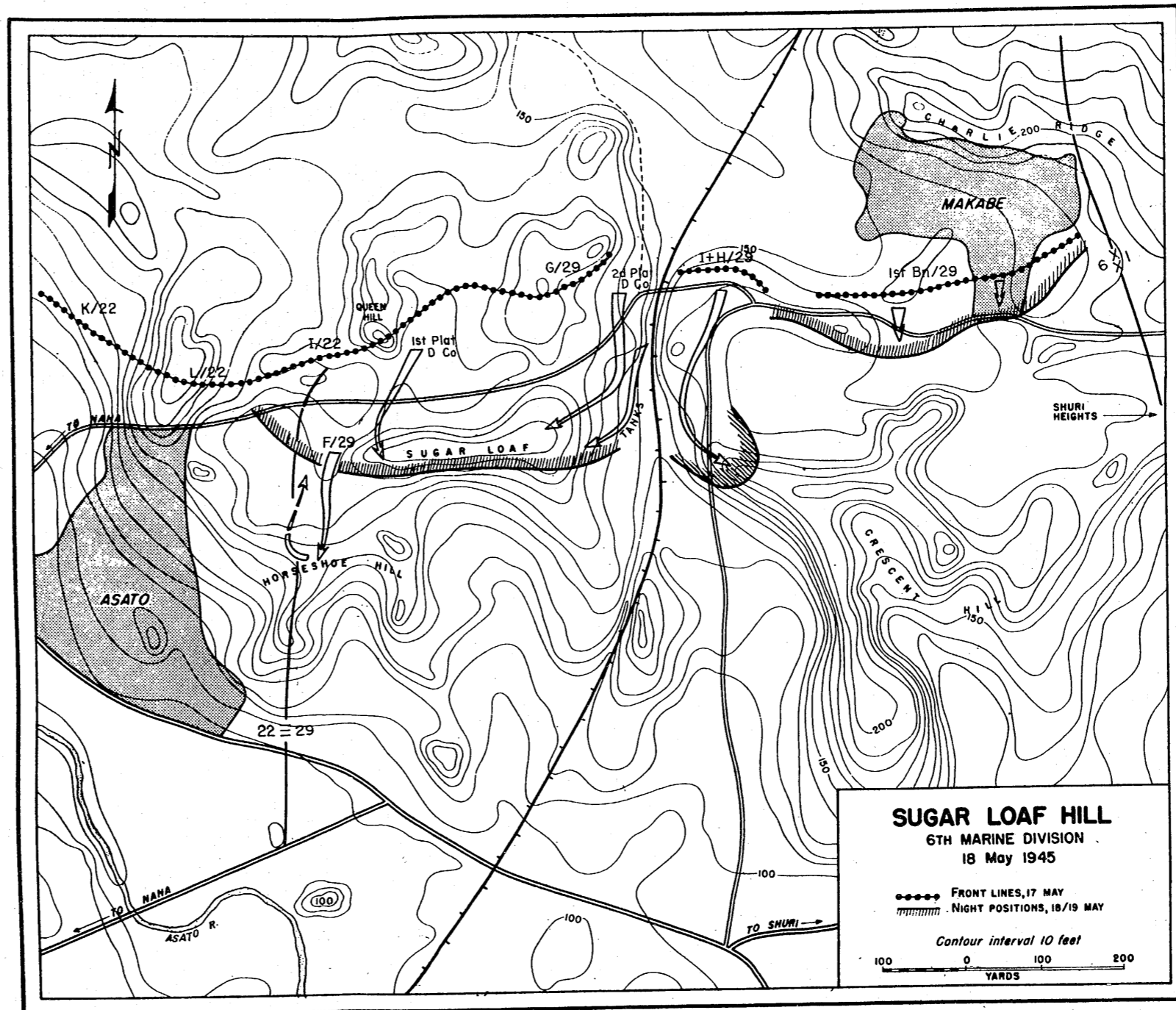
1000 0 1000
YARDS



MAP. NO. 32



MAP. NO. 33



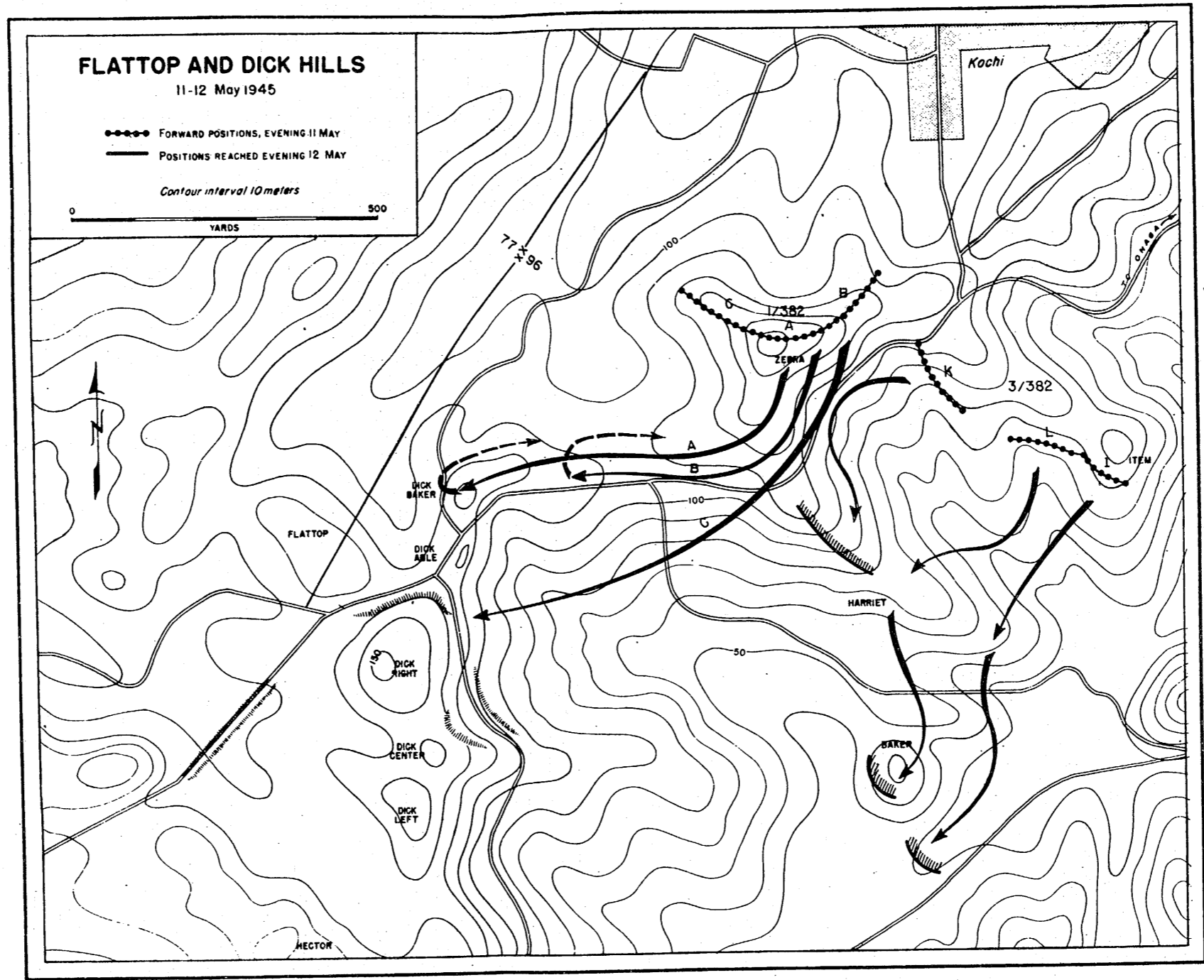
SUGAR LOAF HILL
 6TH MARINE DIVISION
 18 May 1945

◆◆◆◆ FRONT LINES, 17 MAY
 - - - - NIGHT POSITIONS, 18/19 MAY

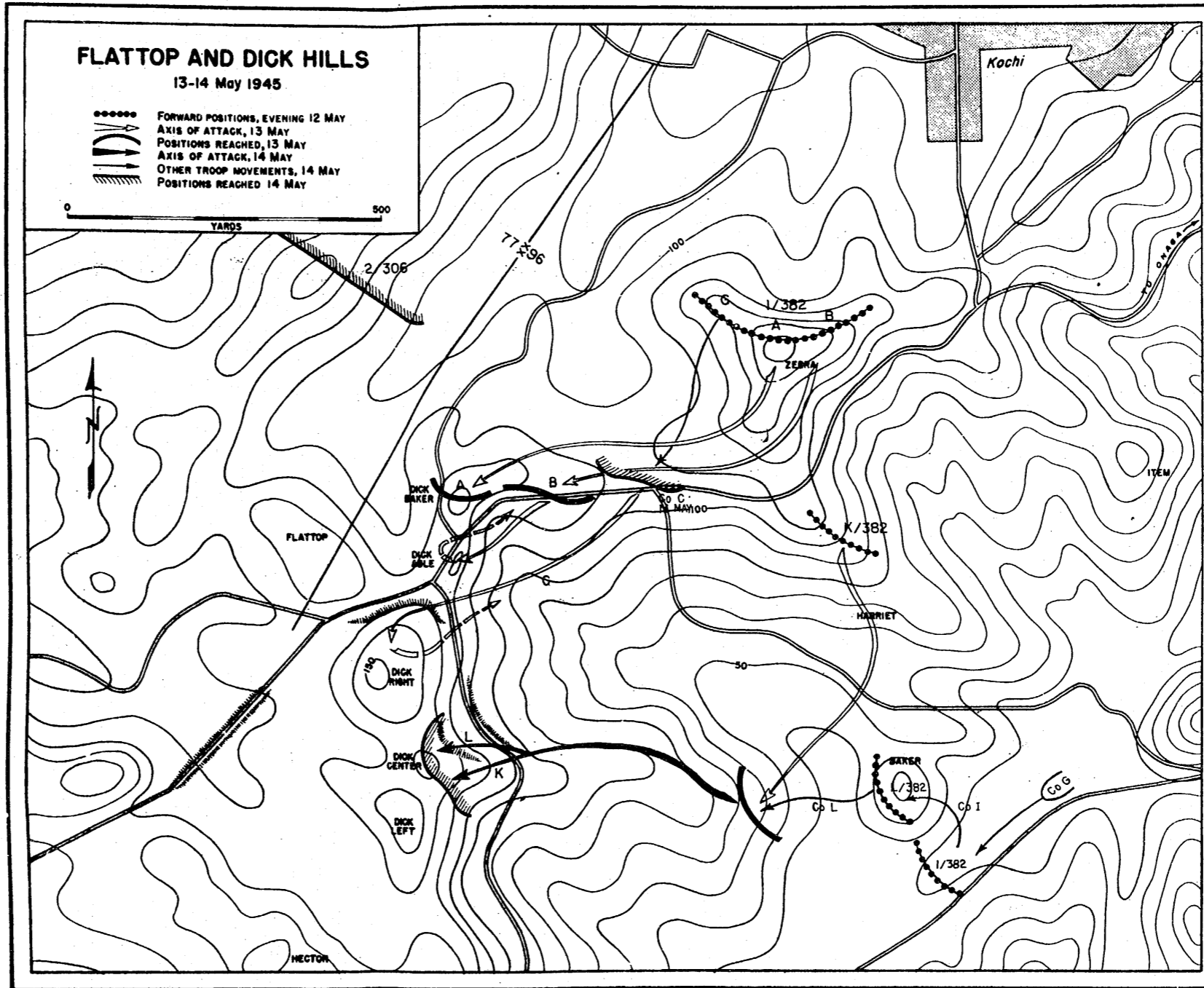
Contour interval 10 feet

100 0 100 200
 YARDS

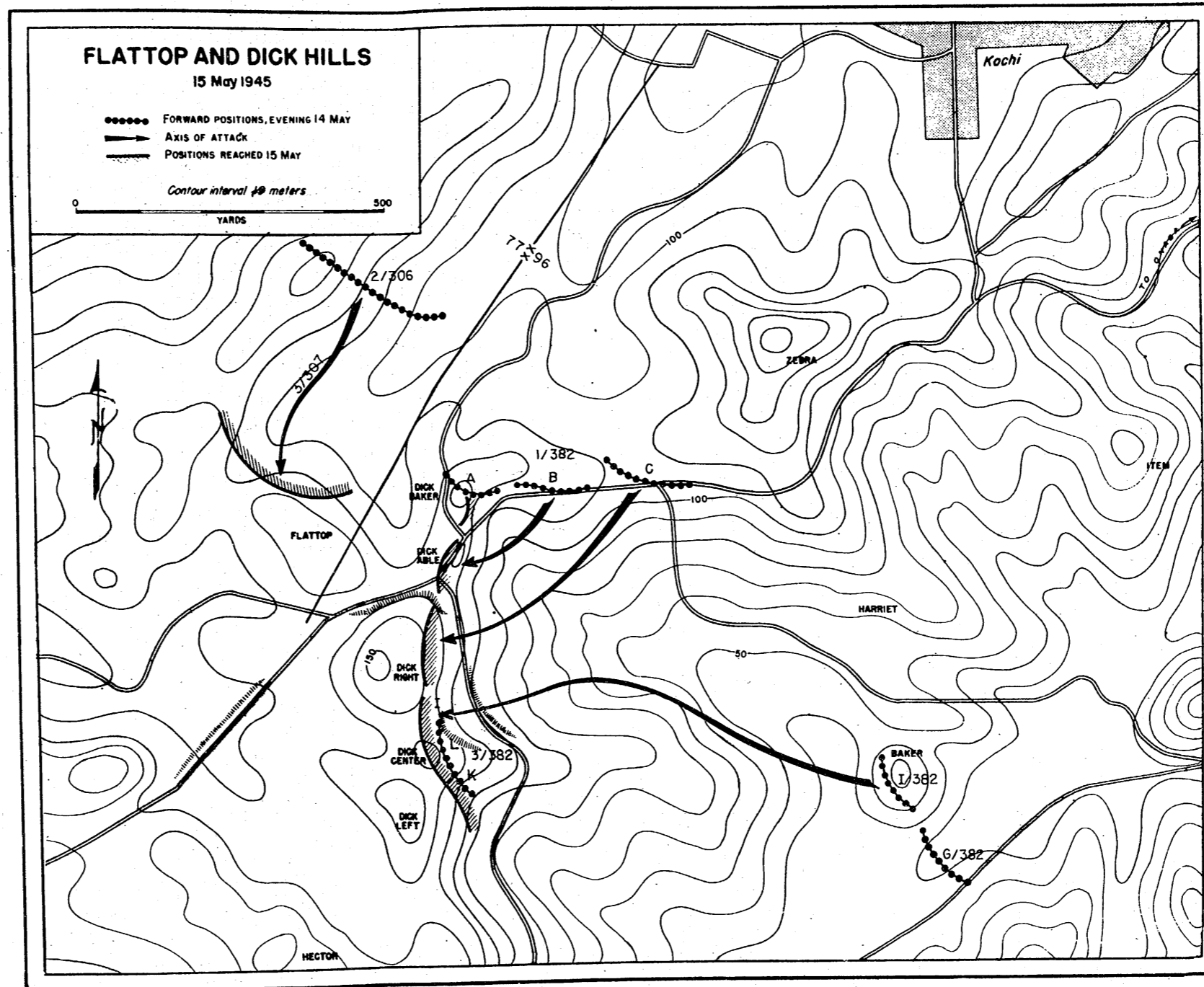
MAP. NO. 34



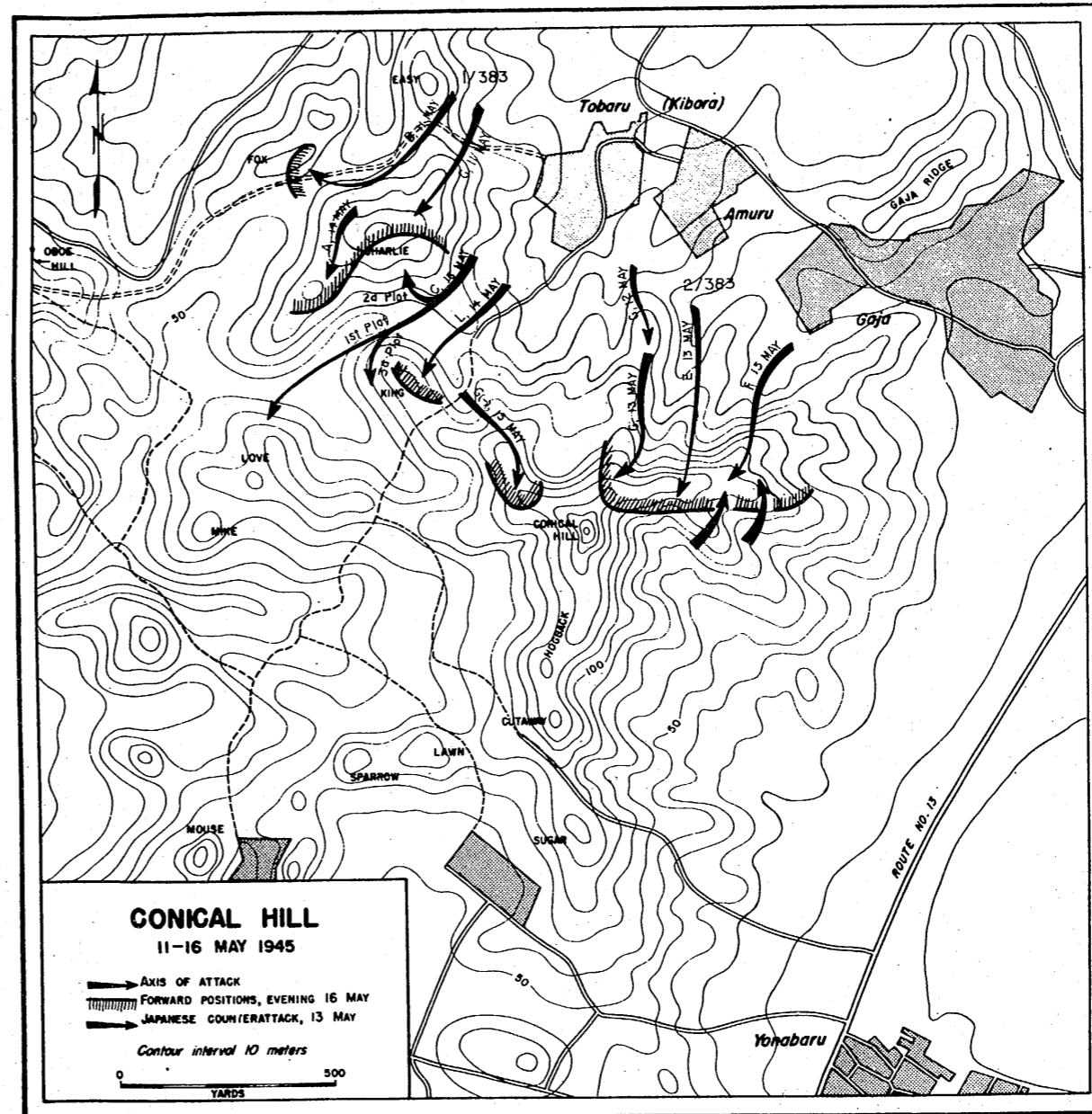
MAP. NO. 35



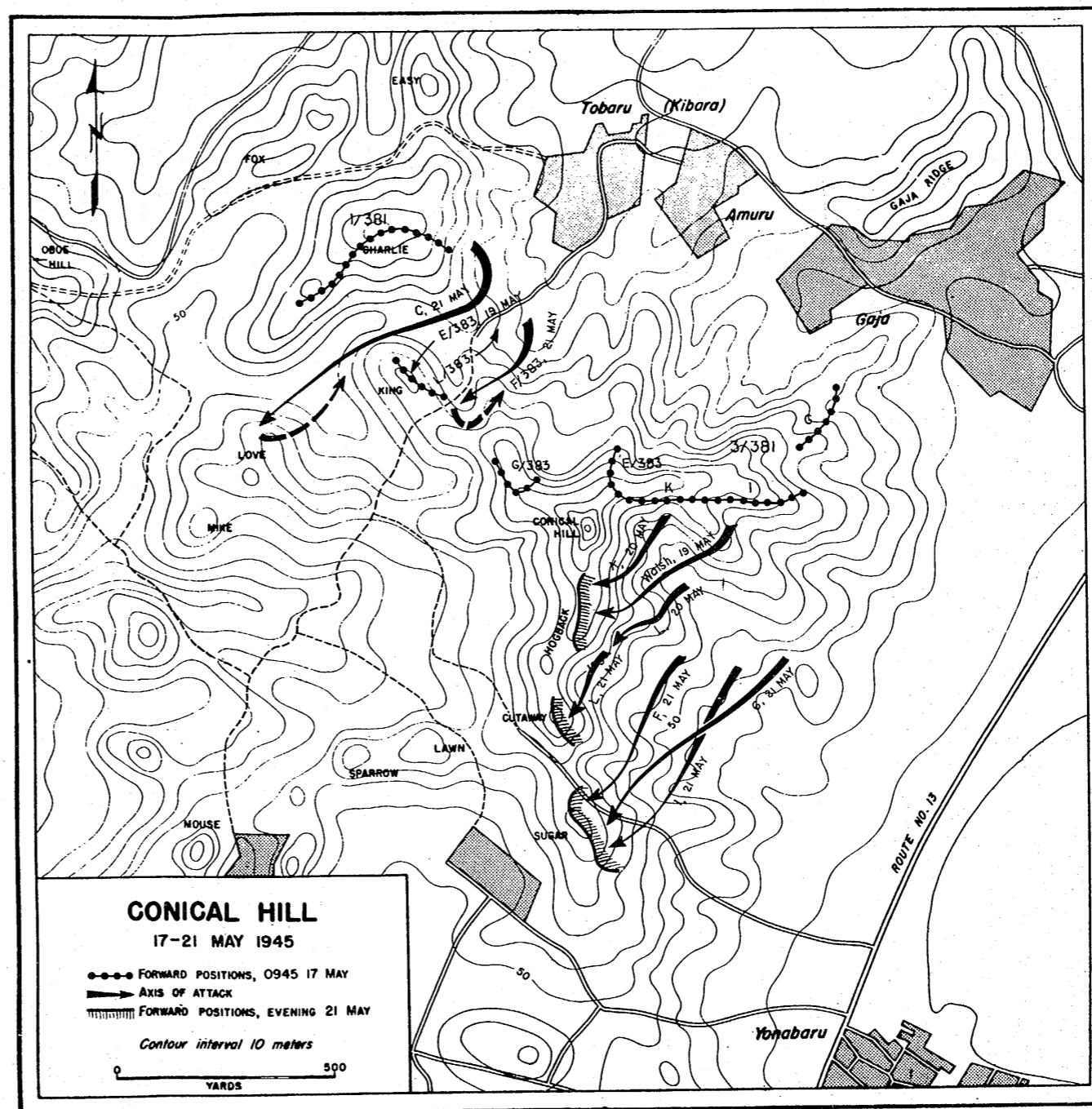
MAP. NO. 36



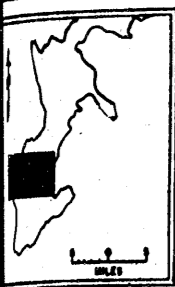
MAP. NO. 37



MAP. NO. 38



MAP. NO. 39



FALL OF SHURI 30-31 MAY 1945

- FRONT LINES, EVENING 29 MAY
- POSITIONS REACHED EVENING 30 MAY
- POSITIONS REACHED EVENING 31 MAY
- CORPS BOUNDARY TO 30 MAY
- MAIN JAPANESE FLANK-PROTECTING POSITIONS

Contour interval 10 meters

0 1000 2000
METERS



