

necessary modifications in regard to machinery and tools and chemical products which are to assume greater importance than in 1937.

The percentages of the net production of various branches of the manufacturing industry to that of the entire Japanese industry in 1930-34 are tabulated in Table No. 35; the same percentages for 1935-40 in Table No. 36. If the 1937 percentages are compared with the average percentages through 1930-34, it will be seen that in the case of the textile industry, the net production fell from 19.7 per cent to 14.1 per cent; and in the case of the food industry likewise from 17.5 per cent to 8.9 per cent; but that in the case of the metal industry it rose from 10.7 per cent to 19.0 per cent, and in the case of the machinery and tool industry from 15.7 per cent to 21.3 per cent. The production percentages of the manufacturing industries in 1953 will have to be so modified as to allow greater shares to such branches as machinery and tools and chemicals.

VII. Restoration of War Damage

The foregoing Chapters have shown the various conditions required in 1953 for restoring the Japanese standard of living to the 1930-34 level. These conditions presuppose that the physical foundation for the national livelihood remains substantially the same as in the base years. In reality, however, Japan has lost in the War about 20 per cent of housing and about 70 per cent of shipping. Enormous damage has been done to industrial plants and equipment, railways, and telegraph and telephone installations, while vast quantities of clothing, household furniture and appliances have been destroyed.

According to an investigation made by the Economic Stabilization Board, the material damage suffered by Japan from

Table No. 37 is a tentative compilation made by taking into account the average figures through 1930-34 and those for 1937. In comparison with the figures for 1937, the percentage of the net production of the textile industry is lowered from 14.1 per cent of the total to 10.4 per cent, while in the case of machinery and tools it is raised from 21.3 per cent to 24.0 per cent, and in the case of chemicals from 18.1 per cent to 26.0 per cent. The net production of each branch of the manufacturing industry based on the above assumptions shows the following percentages as compared to the 1930-34 average.

Textile Industry	73%
Metal Industry	201%
Machinery & Tool Industry	212%
Ceramic Industry	99%
Chemical Industry	195%
Sawmill & Woodwork Industry	74%
Printing & Bookbinding	75%
Food Industry	71%
Other Industries	57%
Gas & Electricity	261%

the War was, as shown in Table No. 38, more than ¥49,600,000,000 in terms of the war-end prices. It is about 20 per cent of the estimated national wealth at the time amounting to ¥260,000,000,000 (excluding land, mines, forests, munitions, etc.). The largest items of damage are buildings and property contained therein, amounting respectively to 34.5 per cent and 35.1 per cent. They are followed by 13.2 per cent of shipping and 9.5 per cent of industrial machinery and tools.

Damage to the industrial production capacity is shown in Table No. 39. The power industry suffered damage as much as 30 to 58 per cent, excepting hydro-electric installations. The machine industry follows with damage ranging from

20 to 50 per cent. On the other hand, damage to the non-ferrous metal industry and textile industry was comparatively slight. However, the present capacity of the textile industry is no more than 30 per cent of the prewar level, owing to the scrapping and conversion to the munitions industry during the War.

It has been shown that an increase of about 20 per cent in the national income is necessary in 1953 in order that 83,640,000 Japanese people may maintain the same standard of living as in 1930-34. Even if there is an increase of 20 per cent in the national income, it will be impossible to maintain the 1930-34 standard of living because of the large war damage to the national wealth which constitutes the foundation for the people's living. The restoration of war damage can be accomplished only at the expense of the national income which will by so much reduce national consumption. Thus the standard of living of the people will be doubly affected in the years to come.

How much funds and materials are needed for the restoration of war damage? Rough estimates made by the Ministry of Foreign Affairs towards the end of 1946 with regard to four items, namely, buildings, railways, communication facilities and shipping, indicate the quantities of steel and wood which are required for the restoration as follows:

	Steel (in 1,000 metric tons)	Wood (in million koku)
Buildings	8,550	342
Railways	1,250	18
Communication	270	—
Shipping	1,700	—
Total	11,770	360

(Note) One koku is approximately 10 cubic feet.

If what are necessary for the repair of the damage to factories, mines, power

plants, roads, harbors, etc. is added to the above, the total will amount to 14 million metric tons of steel and 400 million koku (4,000 million cubic feet) of wood. If buildings are to be restored in 20 years and other property in 10 years, the total amount of material for restoration in the first 10 years will be about 10 million metric tons of steel and 250 million koku (2,500 million cubic feet) of wood. Accordingly, one million metric tons of steel and 25 million koku of wood will be needed annually for such restoration. In order to import them from abroad, it will cost about ¥ 320 million at the 1939 prices, for which exportation amounting to about ¥486 million and the importation of necessary raw materials costing about ¥165 million will be required.

To conclude, if the 1930-34 standard of living is to be restored along with the necessary restoration of war damage, the figures for the national income, the scale of production and foreign trade, will have to be much larger than the estimates such as have been made on the basis of the data examined in the present report.

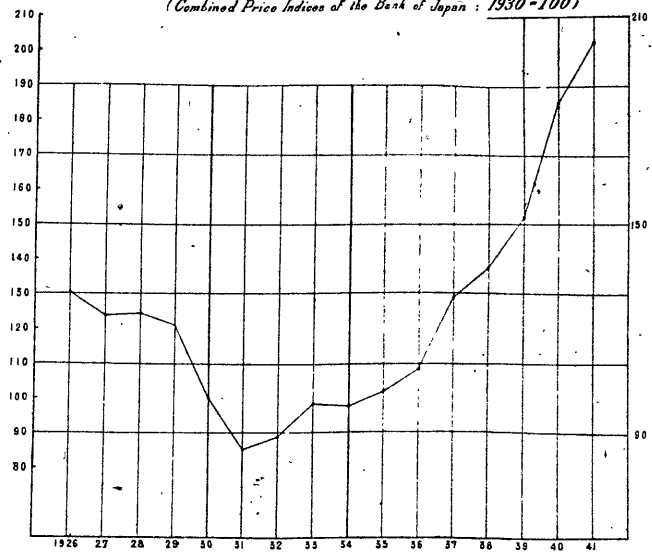
Table No. 1

1926-41 Prices

(Combined Price Indices of the Bank of Japan, 1930=100)

Year	
1926	130.5
1927	123.8
1928	124.2
1929	121.0
1930	100.0
1931	85.0
1932	88.9
1933	98.4
1934	97.8
1935	101.8
1936	108.2
1937	128.9
1938	137.3
1939	152.0
1940	185.3
1941	202.9

Diagram 1. 1926-1941 Price Indices
(Combined Price Indices of the Bank of Japan : 1930=100)



0237

Table No. 2

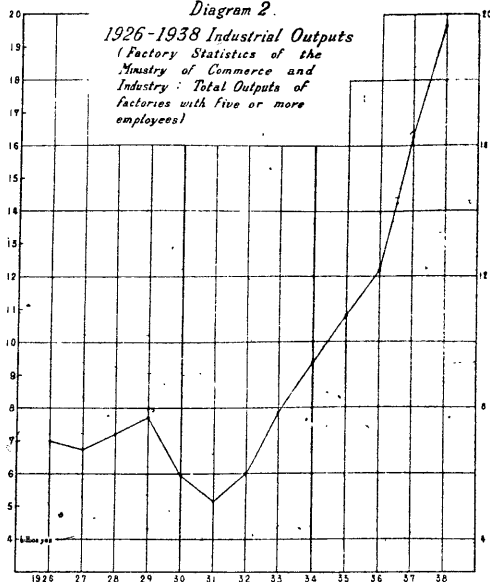
1926-38 Industrial Outputs

(Factory Statistics of the Ministry of Commerce and Industry: Total
Outputs of Factories with 5 or more Employees)

(in million yen)

Year	
1926	7,001
1927	6,746
1928	7,206
1929	7,717
1930	5,963
1931	5,175
1932	5,982
1933	7,871
1934	9,390
1935	10,837
1936	12,258
1937	16,356
1938	19,667

Diagram 2.
1926-1938 Industrial Outputs
(Factory Statistics of the
Ministry of Commerce and
Industry: Total Outputs of
factories with five or more
employees)



0239

Table No. 3

1926-36 Mining Outputs

(Mining Statistics of the Ministry of Commerce and Industry)

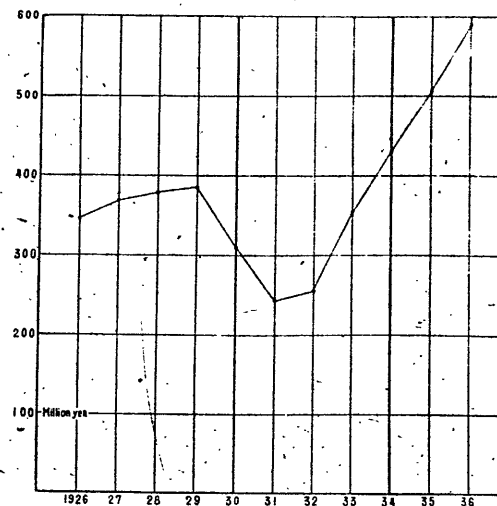
(in million yen)

Year	
1926	347
1927	369
1928	379
1929	385
1930	308
1931	242
1932	255
1933	354
1934	432
1935	504
1936	589

0240

Diagram 3. 1926-1936 Mining Outputs

(Mining Bureau, Ministry of Commerce and Industry)



0241

Table No. 4

1920-44 National Income

(For 1920-39, Estimates of the Statistics Bureau of the Cabinet)

(For 1940-44, Estimates of the Ministry of Finance)

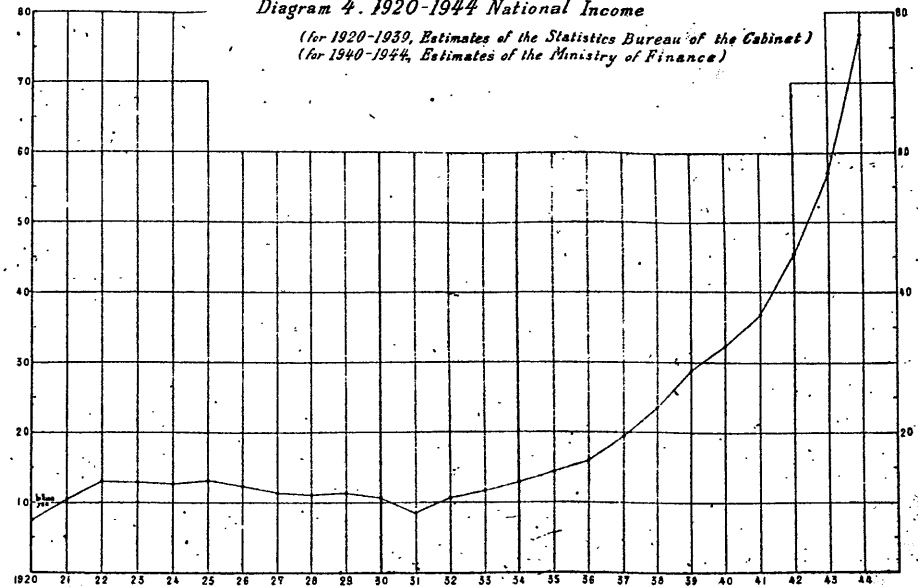
(in million yen)

Year		Year	
1920	7,954	1933	11,929
1921	10,688	1934	13,082
1922	13,391	1935	14,532
1923	13,255	1936	16,188
1924	12,883	1937	19,414
1925	13,382	1938	23,424
1926	12,503	1939	28,987
1927	11,637	1940	32,100
1928	11,434	1941	36,900
1929	11,510	1942	45,400
1930	10,636	1943	56,900
1931	8,716	1944	76,800
1932	10,733		

0242

Diagram 4. 1920-1944 National Income

(for 1920-1939, Estimates of the Statistics Bureau of the Cabinet)
(for 1940-1944, Estimates of the Ministry of Finance)



0243

Table No. 5

Military Appropriations in 1926-44 and their Ratio against the Total Annual Expenditure and National Income

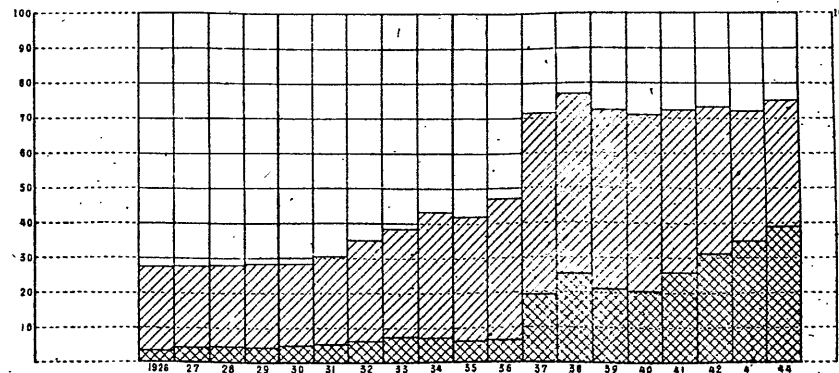
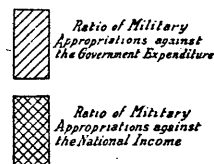
(in million yen)

Year	Military Appropriation(A)	Total Annual Expenditure(B)	National Income (C)	A/B	A/C
1926	434	1,579	12,503	27.49	3.47
1927	492	1,766	11,637	27.86	4.23
1928	507	1,815	11,434	27.93	4.43
1929	495	1,736	11,510	28.51	4.30
1930	443	1,558	10,636	28.43	4.17
1931	455	1,477	8,716	30.81	5.22
1932	686	1,950	10,733	35.18	6.39
1933	873	2,255	11,929	38.71	7.32
1934	942	2,163	13,082	43.55	7.20
1935	933	2,206	14,532	42.29	6.42
1936	1,078	2,282	16,188	47.24	6.66
1937	3,777	5,249	19,414	71.96	19.46
1938	6,017	7,820	23,424	76.94	25.69
1939	6,234	8,564	28,987	72.79	21.51
1940	6,667	9,402	32,100	70.91	20.77
1941	9,575	13,274	36,900	72.13	25.95
1942	14,153	19,375	45,400	73.06	31.17
1943	20,031	27,810	56,900	72.03	35.20
1944	30,029	44,023	76,800	75.03	39.10

(Note) The national income for 1926-39 is estimated by the Statistics Bureau of the Cabinet and that for 1940-44 by the Ministry of Finance.

0244

Diagram 5. Ratio of Military Appropriations against the National Income and Government Expenditure for 1926-1944



0245

Table No. 6
National Income and Estimated Apportionment thereof for 1930-34
(in million yen)

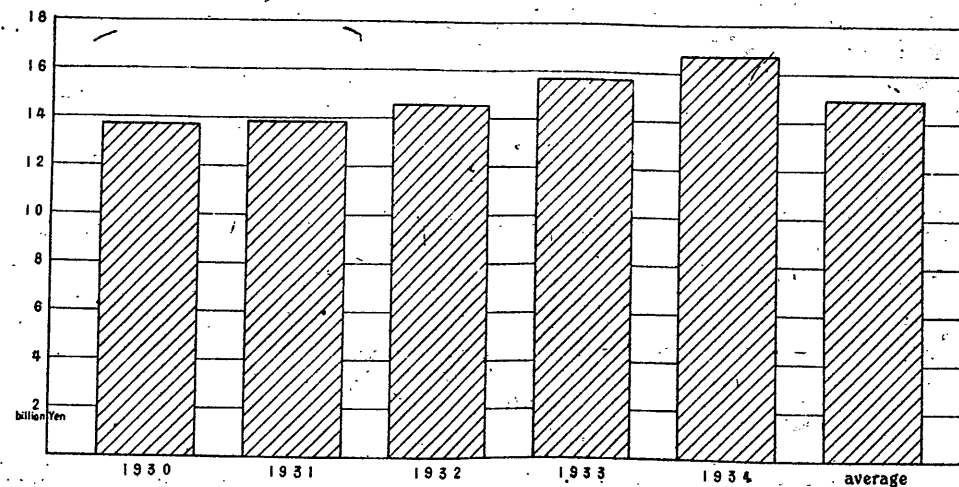
(Researches by the Economic Stabilization Board)

	1930	1931	1932	1933	1934	Average
1 National Income from Production	11,535	10,512	11,620	13,492	14,266	12,285
Agriculture & Forestry	1,883	1,650	2,008	2,443	2,217	2,040
Aquatic Product Industry	190	170	166	195	206	185
Mining	250	195	207	292	352	259
Manufacturing Industry	3,483	3,135	3,700	4,499	5,009	3,965
Transportation & Communication	841	808	808	890	966	863
Commerce	2,436	2,202	2,324	2,641	2,866	2,494
Public Service & Professions	1,317	1,316	1,290	1,353	1,417	1,346
Others	1,105	1,036	1,117	1,174	1,233	1,133
2 Adjustment	2,375	1,417	1,359	1,971	1,907	1,807
Transferred Income	766	709	823	1,419	1,152	774
Indirect Taxes	829	787	747	802	875	808
Depreciation, etc.	335	335	449	777	789	537
Appreciation of Stocks, etc. & Inventory Checking	446	-414	-660	-1,027	-909	-510
3 International Balance (Excess of Payment.....-)	-210	-172	-102	-61	-136	-82
Trade	76	89	21	56	111	71
Non-Trade	15	149	-2	-89	39	22
Total	91	258	19	33	150	93
Net Export of Gold & Silver(-)	-301	-410	-121	-28	-14	-175
Grand Total	13,701	11,757	12,877	15,402	16,310	14,012
Apportionment	1930	1931	1932	1933	1934	Average
1 Public Finance	2,601	2,398	2,992	4,026	3,750	3,153
(A) National Finance	1,482	1,387	1,872	2,183	2,261	1,837
(a) Expenditures for Supplies & Services	1,037	997	1,398	1,648	1,696	1,355
Administrative Expenditure	327	318	370	385	411	362
Military Expenditure	443	455	686	873	942	680
Investment	267	224	342	390	343	313
(b) Transferred Expenditure	445	390	474	535	565	482
(B) Local Finance	1,117	1,011	1,120	1,843	1,489	1,316
(a) Expenditure for Supplies & Services	789	692	771	959	902	824
(b) Transferred Expenditure	321	319	349	884	587	492
2 Formation of Civilian Capital	1,420	1,139	1,051	1,874	2,618	1,621
Equipments, Funds, etc.	1,536	1,109	1,047	1,445	2,256	1,479
Increase of Stocks	-116	30	4	429	362	142
3 National Consumption	9,680	8,220	8,834	9,502	9,942	9,238
(A) Foods & Drinks	3,414	2,738	3,053	3,194	3,561	3,192
(B) Others	6,266	5,482	5,781	6,308	6,381	6,046
Grand Total	13,701	11,757	12,877	15,402	16,310	14,012

(31)

0246

Diagram 6. Real National Income for 1930-1934



0247

Table No. 7

Estimates of Classified National Consumption (in million yen)

	1930		1931		1932		1933		1934		Average	
	million yen	%	million yen	%	million yen	%	million yen	%	million yen	%	million yen	%
Food & Drinks	3,414	37.7	2,738	35.8	3,053	36.6	3,194	35.6	3,561	37.8	3,192	36.7
Luxuries	543	6.0	502	6.6	551	6.6	570	6.3	573	6.1	548	6.3
Dwelling	934	10.3	916	12.0	1,062	12.7	1,109	12.3	1,118	11.9	1,028	11.8
Light & Heat	517	5.7	426	5.6	439	5.3	482	5.4	477	5.1	468	5.4
Clothing	936	10.3	799	10.5	887	10.6	997	11.1	992	10.5	922	10.6
Health & Sanitation	534	6.9	517	6.8	519	6.2	580	6.4	614	6.5	553	6.4
Nursing & Education	226	2.5	143	1.9	168	2.0	193	2.1	205	2.2	187	2.2
Social Expenses	771	8.5	683	8.9	743	8.9	795	8.8	779	8.3	755	8.7
Recreation & Amusement	292	3.2	266	3.5	308	3.7	351	3.9	345	3.7	313	3.6
Others	891	9.8	650	8.5	620	7.4	722	8.0	763	8.0	727	8.4
Total of Household Consumption	9,058	100.	7,639	100.	8,350	100.	8,993	100.	9,417	100.	8,693	100.
Levies	33		44		47		50		49		45	
Imputed Land & House Rent	488		451		350		363		371		405	
Service Expenditures of Banking Institutions	101		86		87		96		105		95	
Grand Total	9,680		8,220		8,834		9,502		9,942		9,138	

(Researches by the Economic Stabilization Board)

0248

Table No. 8

National Food Intake of 1930-34

Item	Consumption for Food (in 1,000 tons)	Net intake (in 1,000 tons)	Daily Per Capita Intake		
			Weight (in grams)	Calorie	Protein (in grams)
Plant Food					
Cereals					
Rice	10,867.6	9,426.4	389.2	1,358	29.0
Barley	527.4	380.7	15.7	56	1.3
Rye	695.7	581.6	24.1	84	2.7
Wheat	1,088.2	787.0	32.5	116	3.9
Oat	114.3	72.6	3.0	12	0.3
Other Cereals	323.7	211.6	8.7	31	0.9
Total	13,616.9	11,459.9	473.2	1,657	39.1
Pulses					
Soya-bean	581.2	554.9	22.9	95	9.1
Other Pulses	306.9	368.9	15.2	47	3.2
Total	988.1	923.8	38.1	142	12.3
Potatoes					
Sweet Potato	2,650.0	2,232.8	91.8	110	1.0
Irish Potato	720.4	557.3	24.3	19	0.5
Total	3,370.4	2,810.1	116.1	129	1.5
Vegetables	6,237.0	5,258.5	217.2	55	2.0
Fruit	1,142.3	862.9	35.6	17	0.4
Sugar	838.6	755.1	31.2	116	—
Oils	101.7	94.2	3.9	36	—
Seaweeds	357.6	311.6	12.9	5	0.5
Sum Total	26,648.6	22,476.1	928.2	2,157	54.8
Animal Food					
Live-stock					
Milk & Dairy Products					
Meat	209.8	188.8	7.8	5	0.2
Eggs	155.9	145.2	6.0	7	1.2
Total	180.9	146.3	6.0	10	0.8
Total	546.6	480.3	19.8	22	2.2
Fish	2,688.6	1,277.4	52.8	54	9.4
Sum Total	3,235.1	1,757.7	72.6	76	11.8
Grand Total	29,883.8	24,233.8	1,000.8	2,233	66.4

(Researches by the General Affairs Bureau, Ministry of Agriculture and Forestry)

0249

Table No. 9

Domestic Consumption of Textiles in 1930-34
(For Civilian and Industrial Use)
(Researches by the Japan Textile
Association) (in 1,000 pounds)

	1930	1931	1932	1933	1934	Average
Cotton Thread	384,142	504,934	323,372	451,611	412,201	415,073
Carded & Spun Wool	64,744	81,935	94,900	124,849	98,508	92,999
Rayon Thread	20,032	21,162	18,513	46,758	63,548	34,001
Staple Fiber	—	—	120	210	1,024	270
Silk Thread	28,578	20,331	15,918	24,593	27,090	23,303
Spun Silk Yarn	7,286	9,608	9,159	8,670	7,295	8,404
Flax & Hemp Thread	7,798	14,597	14,886	15,486	18,971	14,348
Jute & Hemp	61,906	93,613	85,547	103,871	125,435	92,874
Total	571,486	712,277	562,475	773,053	751,078	681,272
Per Capita (in pound)	8.9	11.34	8.48	11.51	11.06	10.258

Table No. 10

Average Total Domestic Consumption and Per Capita
Consumption of Industrial Raw Materials and
Finished Products in 1930-34
(Researches by the Statistics and Research Bureau
of the Ministry of Commerce and Industry)

Material	Domestic Consumption	Per Capita Consumption	Material	Domestic Consumption	Per Capita Consumption
Pig Iron	1,897,280 tons	28.6 kilograms	Chemical Pulp for Paper	261,945 English tons	0.00395 English tons
Ordinary Steel	2,232,472 tons	33.7 kilograms	Mechanical Pulp for Paper	99,601 English tons	0.0015 English tons
Steel Ingot	2,363,474 tons	35.6 kilograms	Foreign-style Paper	1,000 pounds	pounds
Gold	13,143 tons	198 grams	Japanese-style Paper	1,000 pounds	pounds
Silver	183,064 tons	2,759 grams	Cardboard Paper	1,000 pounds	pounds
Copper	68,131 tons	1,027 grams	Timber	16,922,778 cubic meters	0.255 cubic meters
Lead	69,256 tons	1,043 grams	Ammonium Sulphate	585,089 tons	8.82 kilograms
Zinc	56,728 tons	865 grams	Lime	201,346 tons	3.04 kilograms
Tin	4,290 tons	64 grams	Lime Nitrogen	944,998 tons	14.4 kilograms
Mercury	328 tons	5 grams	Phosphate	1,241,000 tons	267 kilograms
Pyrites	767,490 tons	11,568 grams	Salt	106,750 tons	1.609 kilograms
Sulphur	68,056 tons	1,025 grams	Soda	135,497 tons	2.04 kilograms
Coal	33,073,000 tons	499 kilograms	Soda Ash	224,721 tons	3.38 kilograms
Coke	1,738,441 tons	26 kilograms	Carbide	49,477 tons	0.746 kilograms
Elec- tricity	16,811 million KWH	253.4 KWH	Rubber Products	36,304 tons	0.547 kilograms
Gas	1,000 cubic meters	11.7 cubic meters	Hide & Leather	33,688 tons	0.508 kilograms
Gasoline	774,490 kilolitres	11.637 litres	Hardened Oil	6,117 tons	0.0922 kilograms
Lamp Oil	772,032 kilolitres	11.637 litres	Fat Acid	101,116 tons	1.52 kilograms
Light Oil	118,855 kilolitres	1.791 litres	Soap	2,967,000 tons	44 kilograms
Heavy Oil	181,653 kilolitres	2.738 litres	Cement	3,409,051 tons	5.1 square feet
Lubricat- ing Oil	1,383,914 kilolitres	20.861 litres	Plate Glass	100 square feet	5.1 square feet
Rayon Pulp	180,436 kilolitres	2.719 litres	Total of Machi- nery and Tools	726,273 1,000 yen	10.947 yen
	48,526 English tons	0.000,737 English tons			

0250

0251

Table No. 11

Production of Principal Materials in 1930-34

	Unit	1930	1931	1932	1933	1934	Average
Agriculture							
Rice	1,000 koku	59,558	66,876	55,215	60,390	70,829	62,574
Wheat	"	21,619	22,338	22,038	22,318	24,914	22,651
Irish Potato	1,000 kan	276,435	245,913	267,582	266,321	338,698	299,029
Sweet Potato	"	907,281	901,869	925,732	936,460	809,878	896,243
Soya-bean	1,000 koku	2,655	3,034	2,435	2,412	2,808	2,679
Forestry							
Timber	"	42,871	41,180	43,555	51,009	65,069	48,737
Charcoal	1,000 kan	459,758	488,092	503,212	527,386	586,213	512,932
Aquatic Product							
Fresh Fish	"	667,111	758,942	792,485	1,092,893	939,620	850,210
Canned Products	"	16,009	12,315	15,375	19,521	24,751	17,594
Seaweed	"	18,450	13,357	13,685	11,139	18,467	15,120
Mining							
Iron Ore	ton	245,991	208,181	226,722	320,670	431,681	286,649
Gold	kg.	12,068	12,275	12,497	13,729	15,147	13,143
Silver	"	175,064	173,765	163,625	185,610	217,255	183,064
Copper	ton	79,003	75,848	71,877	69,033	67,002	72,559
Lead	"	3,581	4,070	6,415	6,825	7,039	5,585
Zinc	"	24,669	25,407	27,043	30,658	34,146	27,985
Sulphur	"	62,360	61,499	84,530	114,426	135,412	91,645
Pyrites	"	561,398	560,372	726,073	903,129	1,090,484	768,291
Crude Oil	kilo- litre	316,560	305,776	253,646	225,566	283,863	277,082
Gasoline	"	218,715	293,466	373,428	406,426	492,437	356,890
Lamp Oil	"	41,641	61,375	82,405	79,835	91,648	71,381
Light Oil	"	211,132	192,310	221,726	196,880	199,654	204,340

(Continued on Page 43)

(41)

0252

Table No. 11 (Continued from Page 41)

Production of Principal Materials in 1930-34

	Unit	1930	1931	1932	1933	1934	Average
Heavy Oil	kilolitre	35,353	75,895	71,297	127,637	224,701	106,977
Coal	1,000 tons	31,376	27,988	28,053	32,524	35,926	31,173
Manufacturing							
Industry							
Textile Industry							
Cotton Thread	1,000 pounds	1,009,880	1,026,853	1,124,175	1,239,942	1,388,977	1,167,965
Carded & Spun Woolen Yarn	"	58,556	70,808	92,355	130,938	116,047	93,741
Rayon Thread	"	37,149	48,835	69,084	97,997	151,887	81,170
Staple Fiber	"	—	—	550	965	4,720	1,247
Silk	"	91,472	97,113	92,191	93,456	100,289	95,504
Spun Silk Thread	"	12,305	12,900	14,987	14,623	14,412	13,845
Hemp Thread	"	58,728	56,945	57,605	64,115	65,535	60,603
Chemical Industry							
Ammonium Sulphate	ton	265,826	393,237	459,663	471,398	494,350	322,615
Soda Ash	"	57,233	77,805	84,204	110,239	132,852	92,467
Caustic Soda	"	34,738	48,536	75,116	110,953	177,771	89,423
Carbide	"	282,507	170,742	233,892	216,728	254,174	231,609
Rubber Products	"	33,000	38,000	53,000	62,000	74,000	62,000
Hide & Leather	"	11,856	12,348	15,104	15,203	14,499	13,802
Ceramic Industry							
Cement	1,000 tons	3,183	3,107	3,365	4,210	4,321	3,637
Plate Glass	100 square feet	2,267,895	2,355,207	2,397,921	2,964,187	3,163,063	2,629,656
Iron & Steel Industry							
Ordinary Steel	1,000 tons	1,805,372	1,580,287	1,974,383	2,562,677	3,050,259	2,194,596
Pig Iron	"	1,161,894	917,342	1,010,761	1,436,682	1,728,158	1,250,967

(Note) From "Substance of the 1920-34 Standard of Living" by the Ministry of Foreign Affairs

(43)

0253

Table No. 12

Total and Net Amounts of Production of Each Industry in 1930-34
(in million yen)

	1930		1931		1932		
	Total	Net	Total	Net	Total	Net	
Agriculture & Forestry	2,663.5	1,883.1	2,263.9	1,650.3	2,652.8	2,008.1	
Aquatic Industry	341.4	189.6	306.9	170.3	299.4	166.1	
Mining	307.5	249.5	240.1	194.9	254.6	206.9	
Industry	9,261.7	3,482.8	8,058.5	3,134.7	9,160.6	3,697.8	
Manufacture	7,840.5	2,853.9	6,688.0	2,528.1	7,856.2	3,118.9	
Public Utilities	309.2	158.5	295.2	151.8	322.8	165.6	
Electricity	179.0	89.2	175.7	87.6	201.3	100.4	
Gas	95.6	47.6	81.9	40.8	83.8	41.8	
Water-works	34.6	21.5	37.6	23.4	37.7	23.4	
Civil Engineering	1,112.0	470.1	1,075.3	451.8	981.8	415.3	
Communications	—	811.2	—	807.5	—	808.4	
Transportation	—	629.6	—	596.2	—	584.2	
Communications	—	211.6	—	211.3	—	224.2	
Commerce	—	2,436.3	—	2,202.7	—	2,324.3	
Services	—	1,346.6	—	1,316.0	—	1,290.0	
Public Service	—	751.6	—	719.0	—	709.0	
Professions	—	398.8	—	403.0	—	395.0	
Housekeeping	—	196.2	—	194.0	—	186.0	
	1933		1934		Average		Net production of 1934 with that of 1930 taken as 100
	Total	Net	Total	Net	Total	Net	
Agriculture & Forestry	3,265.4	2,442.5	2,988.4	2,214.3	2,766.8	2,040.3	118
Aquatic Industry	350.9	194.7	371.1	205.9	333.9	185.3	108
Mining	354.9	291.6	432.0	351.6	318.4	258.9	141
Industry	11,707.9	4,499.4	13,609.0	5,009.4	10,359.6	3,965.2	144
Manufacture	9,918.2	3,709.4	11,737.2	4,178.4	8,808.0	3,277.7	
Public Utilities	359.7	185.2	438.5	224.8	345.1	177.2	
Electricity	220.4	114.4	267.7	133.5	210.6	105.0	
Gas	82.9	41.3	120.4	60.0	92.9	46.3	
Waterworks	47.4	29.5	50.4	31.3	41.6	25.8	
Civil Engineering	1,430.0	604.8	1,433.3	606.2	1,206.5	510.3	
Communications	—	850.0	—	966.0	—	854.6	115
Transportation	—	608.4	—	708.3	—	625.3	
Communications	—	241.6	—	257.7	—	229.3	
Commerce	—	2,641.0	—	2,866.3	—	2,494.1	118
Services	—	1,358.0	—	1,417.0	—	1,346.0	105
Public Service	—	749.0	—	800.0	—	746.0	
Professions	—	419.0	—	423.0	—	408.0	
Housekeeping	—	190.0	—	194.0	—	192.0	

(Note) From "National Income and Its Apportionment" by the Economic Stabilization Board.

Table No. 13

Total and Net Amounts of Production of the
Manufacturing Industry in 1930-34 (in million yen)

(From "Statistics of Factories with 5 or more
Employees" by the Ministry of Commerce & Industry)

	1930		1931		1932		1933		1934		Average	Net Production of 1934 with that of 1930 taken as 100	
	Total	Net	Total	Net	Total	Net	Total	Net	Total	Net			
Textile	2,028	399	1,803	424	2,028	503	2,696	523	2,918	464	2,295	463	116
Metal	526	194	435	50	591	200	888	293	1,464	468	781	248	241
Machinery & Tool	616	289	443	255	544	302	805	423	1,082	978	698	449	338
Ceramic	159	75	142	67	160	100	212	125	251	144	185	98	192
Chemical	924	297	826	360	957	411	1,300	534	1,515	597	1,104	440	201
Timber & Wood Work	158	35	147	42	153	43	183	29	219	56	172	41	160
Printing & Bookbinding	183	114	167	73	168	79	170	80	193	95	176	88	83
Food	950	410	835	396	886	370	1,018	445	1,014	432	946	411	105
Others	196	76	188	66	233	91	282	110	837	117	347	92	154
Gas & Electricity	101	67	76	45	82	54	86	70	119	94	93	56	140

Table No. 14 Average Supply and Demand of Principal Materials in 1920-34 (Continued on Page 51)

Industry	Unit	Supply				Demand			
		Production	Import from abroad	Import from colonies	Total	Export abroad	Export to colonies	Total	Domestic consumption
Agriculture									
Rice	1,000 <i>koku</i>	62,574	848	10,897	74,319	521	438	959	73,360
Wheat, etc.	"	22,651	4,260	60	27,071	1	258	259	26,812
Irish Potato	1,000 <i>kan</i>	299,029	—	—	299,029	6,977	—	6,977	292,052
Sweet Potato	"	896,243	—	—	896,243	—	50	50	896,193
Soya-bean	1,000 <i>koku</i>	2,679	3,788	1,559	8,026	11	16	27	7,999
Forestry									
Timber	"	48,737	6,768	8,106	63,611	1,567	1,122	2,689	60,922
Charcoal	1,000 <i>kan</i>	512,932	—	—	512,932	—	—	—	512,932
Aquatic Industry									
Fresh Fish	"	850,210	—	15,076	865,286	1,832	—	1,832	863,454
Canned Food	"	17,594	—	627	18,221	8,281	—	8,281	6,482
Seaweed	"	15,120	—	1,690	16,809	8,423	422	8,845	7,964
Mining									
Iron Ore	1,000 tons	286,649	1,732,306	210,349	2,229,304	—	4,615	4,615	2,224,689
Gold	kilograms	13,143	2,438	10,482	26,063	22,673	0	22,673	3,390
Silver	"	183,064	29,048	17,433	229,545	156,355	0	156,355	73,190
Copper	tons	72,559	15,087	2,443	90,088	20,812	1,145	21,957	68,131
Lead	"	5,585	65,685	449	71,720	901	1,564	2,465	69,256
Zinc	"	27,985	28,859	—	56,844	—	116	116	56,728
Sulphur	"	91,645	—	—	91,645	23,589	—	23,589	68,056
Pyrites	"	768,291	—	—	768,291	801	—	801	767,496
Crude Oil	kilolitre	277,082	—	—	277,082	—	—	—	277,082
Gasoline	"	360,388	439,078	10	1,048,483	—	21,200	27,006	772,032
Lamp Oil	"	74,006	73,453	0	147,459	5,774	19,840	28,605	118,855
Light Oil	"	208,277	—	83	208,360	29	22,043	26,707	181,653
Heavy Oil	"	110,065	1,279,474	—	1,389,539	—	—	5,625	1,383,914
Coal	1,000 tons	33,478	3,131	603	37,212	1,542	496	4,139	33,073
Manufacturing Industry									
Textile									
Cotton Yarn	1,000 pounds	1,157,965	23,430	609	1,182,004	667,569	99,362	766,931	415,073

Table No. 14 (Continued from Page 49)

Industry	Unit	Supply				Demand			
		Production	Import from abroad	Import from colonies	Total	Export abroad	Export to colonies	Total	Domestic consumption
Carded & Spun Wool Yarn	1,000 Pounds	93,741	8,406	—	102,147	5,852	3,293	9,148	92,999
Rayon Yarn	"	81,170	591	—	81,761	44,387	3,374	47,761	34,000
Staple Fiber	"	2,078	—	—	2,078	—	—	—	2,078
Silk Yarn	"	95,504	380	2,587	98,471	74,750	418	75,168	23,303
Spun Silk Yarn	"	13,843	—	—	13,843	5,375	67	5,442	8,404
Hemp Yarn	"	60,603	3,254	—	63,857	14,709	13,981	28,690	35,168
Chemical									
Ammonium Sulphate	tons	416,895	256,010	—	672,905	87,816	—	87,816	585,089
Soda Ash	"	92,467	49,909	—	142,376	6,879	—	6,879	135,497
Caustic Soda	"	89,423	25,933	—	115,356	4,110	4,496	8,606	106,750
Carbide	"	231,609	—	unknown	231,609	7,488	unknown	7,488	224,121
Rubber Products	"	52,000	877	—	52,877	3,400	—	3,400	49,477
Hide & Leather	"	13,802	19,595	3,279	36,676	372	—	372	36,304
Ceramic									
Cement	1,000 tons	3,637	10	31	3,678	497	214	711	2,967
Plate Glass	1,000 square feet	2,629,655	989,521	—	3,522,636	95,336	18,249	113,585	3,409,051
Iron & Steel									
Ordinary Steel	1,000 tons	2,194,596	261,692	4,220	2,460,508	90,678	137,357	228,036	2,232,472
Pig Iron	"	1,250,967	500,990	147,026	1,898,983	103	1,600	1,704	1,897,280
Steel Ingot	"	2,362,225	339,640	15,227	2,717,093	162,702	190,917	353,617	2,363,474

(Note) From "Substance of the 1930-34 Standard of Living" by the Ministry of Foreign Affairs

Table No. 16

Item	Import Items in 1930-34					
	(in million yen)					
	1930	1931	1932	1933	1934	Average
Rice	19.58	6.97	12.16	11.52	0.66	10.18
Wheat	41.51	32.93	49.57	44.38	40.75	41.83
Pulses	49.78	37.35	42.07	50.34	51.97	46.30
Seeds for Oil Extraction	19.56	14.12	13.95	22.10	23.80	18.71
Other Cereals & Corn Meal	14.40	10.63	9.01	4.97	8.26	9.45
Sugar	25.97	15.60	3.33	12.79	9.68	13.47
Tobacco	9.81	10.18	5.08	7.10	9.43	8.32
Other Foods & Drinks	46.51	44.45	38.96	42.60	52.76	45.06
Hide & Leather	13.93	11.92	12.59	18.98	22.32	15.95
Mineral Oil	89.55	85.79	98.59	108.86	124.03	101.36
Raw Rubber	18.38	13.52	16.26	30.12	57.82	27.22
Chemicals (1)	44.79	57.66	58.65	65.67	57.31	56.82
Dyes & Paints	14.80	14.88	17.08	16.99	18.57	16.46
Raw Cotton	362.04	296.27	447.40	604.84	731.42	188.39
Hemp, etc.	14.26	11.93	14.93	19.75	24.31	17.00
Wool & Woollen Yarn	87.61	98.23	92.16	167.05	187.98	126.61
Woollen Textiles	10.94	9.57	10.12	7.07	5.02	8.56
Pulp for Paper	12.08	11.84	15.33	27.06	44.26	22.11
Paper & Paper Goods(2)	15.26	15.54	16.31	14.90	17.62	15.93
Coal	34.20	28.27	27.36	36.66	47.17	34.73
Iron Ore	18.95	12.78	11.88	12.84	19.42	15.17
Iron & Steel	93.60	48.03	65.08	136.64	171.56	102.98
Metal Ware	16.06	12.14	7.59	6.53	8.71	10.21
Clocks, Watches & Parts	4.82	2.68	2.99	2.24	2.80	3.11
Automobiles & Parts	20.77	16.33	14.82	13.87	32.30	19.62
Machinery	85.71	50.91	60.57	72.66	98.02	73.57
Timber	53.08	15.38	33.03	40.58	40.18	42.45
Fertilizers (3)	118.89	58.64	43.96	57.09	74.30	70.58
(Ammonium Sulphate)	(29.62)	(0.10)	(0.10)	(0.01)	(13.81)	(8.73)
Other Goods	185.17	159.13	184.63	265.94	294.62	215.91
Total Foreign Imports	1,542.07	1,231.74	1,427.46	1,912.13	2,277.11	1,678.10
Re-imports	3.98	3.94	4.00	5.09	5.49	4.48
(Domestic Products)						
Total Imports	1,546.05	1,235.68	1,431.46	1,917.22	2,282.50	1,682.58

(Note) (1) Excluding such fertilizers as ammonium sulphate, nitric soda, sulphuric potassium, potassium chlorate, etc.

(2) Including books.

(3) Including chemical fertilizers under (1)

Table No. 16

Items	Export Items in 1930-34					
	(in million yen)					
	1930	1931	1932	1933	1934	Average
Rice	6.57	15.88	4.79	2.12	8.42	7.56
Pulses	7.23	5.08	5.91	7.16	9.05	6.89
Flour	14.48	9.52	20.54	34.96	28.45	21.59
Tea	8.39	8.23	8.17	8.45	9.55	8.56
Aquatic Products	18.07	10.15	7.75	10.25	16.45	12.53
Sugar, etc.	27.58	15.88	9.63	17.16	15.80	17.21
Canned & Bottled Foods	21.76	18.73	22.77	46.98	50.30	32.15
Other Cereals & Foods & Drinks(1)	25.06	19.13	25.41	31.45	34.76	27.16
Raw Silk	417.20	355.72	385.38	392.97	291.66	368.59
Silk Textiles	65.78	43.05	50.29	63.54	77.49	60.03
Rayon Thread	3.24	2.24	5.91	9.48	22.40	8.65
Cotton Thread	15.43	8.80	21.81	16.63	24.96	17.53
Cotton Textiles	272.12	198.73	288.71	363.22	492.35	327.03
Woollen Textiles	2.76	1.40	4.48	12.38	29.85	10.17
Coal	21.78	15.01	13.45	14.16	10.38	14.96
Iron & Iron Goods	23.15	17.66	26.47	61.57	88.31	43.43
Copper & Copper Goods	21.44	12.09	10.65	6.59	8.58	11.87
Brass & Brass Ware	4.89	3.48	4.29	6.81	10.08	5.91
Clocks, Watches & Machinery	35.27	29.89	34.70	67.62	124.98	58.49
Fats & Oils & their Products	30.11	13.61	19.76	26.32	32.83	24.53
Medicines & Chemicals	29.30	22.17	29.79	48.20	52.46	36.38
Paper & Paper Goods(2)	33.15	25.50	19.24	26.60	31.33	27.16
Glass & Glass Ware	9.61	6.53	9.28	15.33	19.45	12.04
Porcelain	27.17	19.31	22.94	35.63	41.88	29.39
Cement	10.07	9.09	8.55	7.39	8.04	8.63
Timber	14.62	9.95	11.33	18.64	23.92	15.69
Rayon Textile	34.90	39.70	60.50	77.38	113.48	65.19
Toys	11.70	9.82	15.12	26.37	30.39	18.68
Hats & Caps	9.36	10.53	7.71	13.93	17.86	11.88
Other Sundry Goods	212.45	164.50	210.48	343.03	413.73	288.83
Total Exports of Domestic Products	1,434.64	1,121.58	1,365.81	1,832.32	2,139.19	1,578.71
Re-exports(Foreign Products)	35.21	25.40	44.18	28.73	32.73	33.25
(Ginned Cotton)	(22.22)	(15.79)	(34.11)	(18.14)	(20.04)	(22.06)
Total Exports	1,469.85	1,146.98	1,409.99	1,861.05	2,171.92	1,611.96

(Note) (1) Including tobacco

(2) Including books

Table No. 17 Principal Items of Export from Japan Proper to Japanese Colonies in 1930-34 (in 1,000 yen)

Item	1930	1931	1932	1933	1934	Annual Average
Rice	13,903	6,896	9,861	9,545	13,635	10,768
Wheat, etc.	1,198	509	1,178	1,660	794	1,084
Flour	8,224	5,803	6,483	5,422	8,819	6,950
Sugar, etc.	5,432	5,962	8,372	5,643	6,047	6,291
Fish	7,973	6,220	6,871	7,839	9,220	7,625
Wines, etc.	9,376	7,970	8,538	9,755	9,553	8,918
Vegetables	2,160	1,555	2,151	2,310	509	1,737
Canned & Bottled Foods & Drinks	2,952	2,456	2,819	3,030	2,110	2,669
Other Foodstuffs	7,861	7,563	10,190	11,036	8,628	9,066
Tobacco	4,403	3,272	2,653	4,152	4,671	3,830
Hide & Leather	1,286	1,227	1,387	1,130	5	1,007
Vegetable & Mineral Oil	9,200	9,254	10,189	12,160	17,312	11,629
Cotton, Silk & Staple Fiber	44,123	26,457	42,290	55,209	86,361	52,888
Woolen Textile	4,284	4,038	5,853	7,503	12,176	6,771
Gunny Bags	2,073	2,130	2,936	3,591	3,198	2,786
Cotton Underwear	4,787	4,691	5,792	8,826	11,363	7,092
Japanese & Foreign Clothing	3,483	3,266	4,191	5,927	7,698	4,914
Medicines, Chemicals, Paints & Dyes	3,077	2,546	2,743	3,098	1,991	2,691
Whipped & Ginned Cotton	5,427	4,587	6,974	8,858	12,344	7,638
Cotton Thread	8,411	6,353	8,433	9,316	12,916	9,086
Rubber Shoes	5,372	2,748	3,580	3,043	5,182	3,985
Paper & Pulp	6,879	6,599	6,432	9,022	8,603	7,507
Coal	4,570	3,073	3,841	4,549	6,003	4,407
Cement	4,480	3,171	3,857	5,651	7,857	5,003
Porcelain & Clay Ware	3,482	3,038	3,666	4,441	5,507	4,020
Minerals & Metals	26,066	20,547	24,439	32,083	38,758	28,379
Mails	2,300	1,868	2,075	3,052	3,742	2,607
Automobiles & Parts	3,749	3,492	3,267	4,785	9,010	4,859
Bicycles & Parts	4,039	3,543	4,390	4,967	6,651	4,718
Machinery	6,089	4,331	4,791	7,474	19,729	8,483
Agricultural Implements	1,307	1,230	1,248	1,600	317	1,140
Timber	11,360	7,110	8,669	11,899	16,619	11,131
Fertilizer	18,629	9,295	12,668	19,019	39,668	19,856
Raw Rubber, its Products	975	727	1,034	2,049	4,371	1,831
Total, including Other Items	442,110	366,512	427,498	529,710	666,378	486,442

(Note) From "Monthly Foreign Trade Report" of the Ministry of Finance.

(57)

0260

Table No. 18 Principal Items of Import to Japan Proper from the Japanese Colonies in 1930-34 (in 1,000 yen)

Item	1930	1931	1932	1933	1934	Annual Average
Animals & Plants	2,893	2,789	3,242	4,247	5	2,635
Rice	148,202	179,535	207,874	217,321	222,339	195,054
Wheat, etc.	45	15	1,453	1,748	181	688
Pulses	18,312	14,378	22,145	20,660	18,914	18,882
Fruits	9,678	10,729	9,105	10,352	10,854	10,144
Sugar, etc.	142,406	120,813	122,172	119,472	122,532	125,479
Aquatic Products, Fishes	18,428	17,060	18,723	20,745	7,548	16,501
Salt	836	1,118	959	1,063	998	995
Canned & Bottled Foods & Drinks	4,647	5,385	5,851	5,641	5,680	5,441
Cow-hide	1,289	1,230	1,382	1,353	1,403	1,381
Camphor	1,256	766	964	1,174	2,196	1,271
Camphor Oil	2,422	1,825	2,062	1,555	821	1,737
Alcohol	2,592	3,054	2,976	5,455	6,950	4,205
Fish Oil	3,325	1,930	1,548	1,448	1,770	2,004
Ginned Cotton	7,546	2,609	3,504	6,488	8,137	5,657
Coroosus	2,121	1,267	1,267	1,762	785	1,440
Raw Silk	16,834	12,015	11,666	14,009	11,474	13,200
Yamamai Silk	7,067	6,385	7,763	9,176	6,543	7,507
Cotton & Staple Fiber Textile	833	1,319	606	734	1,187	936
Paper & Pulp	52,524	48,463	37,094	42,859	58,302	47,848
Hats	2,981	4,718	2,208	2,574	3,937	3,284
Coal	2,727	3,714	4,711	7,213	9,804	6,650
Graphite	911	632	635	957	1,228	879
Cement	1,605	1,110	453	404	134	741
Ores	7,357	6,899	7,430	9,934	12,764	8,878
Gold, Silver & Gold & Silver Ware	6,713	4,787	9,176	11,643	23,349	11,184
Timber	22,026	22,019	23,057	26,187	28,418	24,341
Seaweed	917	1,159	912	1,178	1,035	1,040
Fertilizers	9,573	8,346	18,434	18,750	25,189	16,058
Total, including Other Items	549,982	534,499	582,186	638,213	800,213	621,018

(Note) From "Monthly Foreign Trade Report" of the Ministry of Finance.

(59)

0261

Table No. 19.

The 1926-47 Population of Japan Proper
(in 1,000 persons)
(By the Statistics Bureau of
the Cabinet)

Year		Year	
1926	60,522	1937	71,253
1927	61,317	1938	72,223
1928	62,122	1939	72,876
1929	62,938	1940	73,113
1930	64,450	1941	74,167
1931	65,367	1942	75,114
1932	66,296	1943	76,464
1933	67,239	1944	73,456
1934	68,195	1945	71,996
1935	69,254	1946	73,114
1936	70,258	1947	73,090

Table No. 20

Estimate of Japan's Population (1950-55)
(Estimate of the Population Institute
of the Ministry of Welfare)
(in 1,000 persons)

1950	81,618
1951	82,324
1952	83,003
1953	83,647
1954	84,255
1955	84,821

(Note) The above estimate, made in 1947, seems too conservative at present, and the Population Institute is working on a revised estimate. The tentative figures, reached in August, 1948, are as follows:

1950	83,772
1951	85,125
1952	86,403
1953	87,663
1954	88,919
1955	90,169

(61)

0262

Table No. 21

Food Imports Required in 1953

(in the 1939 value)

Item	Total Consump- tion (in 1,000 kilo- grams)	Produc- tion ("")	Importation		
			Quantity ("")	Unit Price (yen/metric ton)	Value in Money(1,000 yen)
Rice, Wheat, etc.					
Rice	10,056	10,056	—	—	—
Barley	853	853	—	—	—
Rye	888	888	—	—	—
Wheat	7,049	1,401	5,648	126	711,648
Oat	175	175	—	—	—
Total	19,021	13,373	5,648	126	711,648
Miscellaneous Cereals	555	555	—	—	—
Soya-bean					
Soya-bean	420	340	80	145	11,600
Soya-bean Cake	—	—	—	—	—
Total	420	340	80	145	11,600
Potatoes					
Sweet Potato	5,804	5,804	—	—	—
Irish Potato	3,106	3,106	—	—	—
Total	8,910	8,910	—	—	—
Vegetables	7,823	7,823	—	—	—
Fruits	953	953	—	—	—
Sugar	977	48	929	171	158,859
Fats & Oils					
Imports as Raw Materials					
Soya-bean	361	—	361	145	52,345
Rice-bran	70	70	—	—	—
Rape-seed	25	25	—	—	—
Linseed	24	3	21	213	4,473
Paulownia	1	1	—	—	—
Copra	137	—	137	203	27,811
Cotton-seed	45	—	45	89	4,005
Sesame	9	—	9	418	3,762
Peanut	7	—	7	225	1,575
Castor-seed	44	—	44	187	8,228
Others	1	1	—	—	—
Total	724	100	624	164	102,199
Imports as Finished Products					
Paulownia Oil (Tung Oil)	1	—	1	1,119	1,119
Palm Oil	18	—	18	363	6,534
Cattle Fat	4	—	4	293	1,172
Whale Oil	15	15	—	—	—

(Continued on Page 65)

(63)

0263

Table No. 21 (Continued from Page 63)

Fish Oil	4	4	—	—	—
Cocoon Oil	0	0	—	—	—
Total	42	19	23	384	8,825
Total in terms of Finished Products	231	38	193	575	111,024
Seaweeds	1,188	1,188	—	—	—
Total of Vegetable Foodstuffs	40,078	33,228	6,850	154	993,131
Live Stock	525	525	—	—	—
Milk & Dairy Products	525	525	—	—	—
Meats	115	115	—	—	—
Eggs	76	76	—	—	—
Total	716	716	—	—	—
Fishes	4,875	4,875	—	—	—
Total of Animal Foodstuffs	5,591	5,591	—	—	—
Salt	2,538	650	1,888	22	41,536
Grand Total	48,207	39,419	8,738	125	1,034,667

(Note) (1) Figures under Production are estimates for 1952 by the Economic Stabilization Board.

(2) The total consumption is computed on the basis of the average calorie intake for 1930-34 as a whole. However, the intake in respect of each item does not necessarily coincide with that in 1930-34 except fats and oils.

(3) Salt includes industrial salt.

0264

(65)

Table No. 22

Per Capita Daily Food Intake in 1953
(Comparison with 1930-34)

	1930-34 - Average			1953		
	Weight (gram)	Calorie	Protein (gram)	Weight (gram)	Calorie	Protein (gram)
Rice, Wheat, etc.						
Rice	389.2	1,358	29.0	286.4	1,010	21.6
Barley	15.7	56	1.3	16.7	59	1.4
Rye	24.1	84	2.7	20.0	70	2.3
Wheat	32.5	116	3.9	145.3	517	17.7
Oat	3.0	12	0.3	0.4	2	0.1
Total	464.5	1,626	0.9	468.8	1,658	43.1
Miscellaneous						
Cereals	8.7	31	38.1	2.9	10	0.3
Soya-bean						
Soya-bean	22.9	95	9.1	9.6	41	3.9
Soya-bean Cake	15.2	47	3.2	10.2	34	5.2
Total	38.1	142	12.3	19.8	75	9.1
Potatoes						
Sweet Potato	91.8	110	1.0	111.0	134	1.2
Irish Potato	24.3	19	0.5	56.4	44	1.1
Total	116.1	129	1.5	167.4	178	2.3
Vegetables	217.2	55	2.0	216.0	54	2.0
Fruits	35.6	17	0.4	22.6	11	0.2
Sugar	31.2	116	—	31.2	116	—
Fats & Oils	3.9	36	—	3.9	36	—
Seaweeds	12.9	5	0.5	24.5	10	0.8
Total of Vegetable Foodstuffs	928.2	2,157	54.8	957.1	2,148	57.8
Livestock						
Milk & Dairy Products	7.8	5	0.2	17.2	12	0.6
Meats	6.0	7	1.2	3.8	7	0.8
Eggs	6.0	10	0.8	2.5	4	0.3
Total	19.8	22	2.2	23.5	23	1.7
Fish	52.8	54	9.4	61.3	62	11.1
Total of Animal Foodstuffs	72.6	76	11.8	84.8	85	12.8
Grand Total	1,000.8	2,233	66.4	1,041.9	2,233	70.6

(67)

0265

Table No. 23

Textile and Fiber Imports Required in 1953
(in the 1939 value)

Item	Average Per Capita Consumption through 1930-31 (in pounds)	Total Consumption in 1953 (in 1,000 pounds)	Estimated Production from Domestic Raw Materials in 1953 (in 1,000 rials)	Required Importation in 1953		
				Quantity (in 1,000 metric tons)	Unit Price (yen/1,000 pounds)	Value in Money (in 1,000 yen)
Cotton Thread	6,262	623,798	0	Raw Cotton 623,568	347	216,378
Carded & Spun Wool	1,396	116,771	10,327	Wool 133,814	684	91,529
Rayon Thread	0,513	42,911				
Staple Fiber Thread	0,018	1,505				
Jute Thread	0,314	26,265	0	Jute 30,900	185	5,717
Hemp Products	1,086	93,841	0	Manila Hemp 95,622	126	12,048
Total						325,672

(Note) (1) The total consumption is computed by multiplying the average per capita consumption through 1930-31 by 83,417,000 the estimated population in 1953.

(2) Pulp and wood as raw materials of rayon and staple fiber are included in Table No. 24 and industrial salt as a raw material for the same is included in Table No. 21.

0266

(69)

Table No. 24.

Required Imports relating to Mining and Manufacturing Industries in 1953
(in the 1939 value)

Item	Average Total Domestic Consumption through 1930-31 (in 1,000 metric tons)	Multipli- cation Factor as of 1953	Total Domestic Consumption in 1953 (in '000 metric tons)	Estimated Production from Domestic Raw Materials in 1953 (in 1,000 metric tons)	Required Importation		
					Quantity (in 1,000 metric tons)	Unit Price (metric ton/yen)	Value in Money (in 1,000 yen)
Steel	2,232.5	1.39	3,103				
Iron Ore		1.39	7,612	1,200	6,412	13.5 36,562	
Scrap Iron		1.39	3,630	1,378	2,252	74 166,648	
Copper	68.1	1.39	94.7	65	29.7	679 30,166	
Lead	69.3	1.39	96.3	15	81.3	278 22,601	
Zinc	66.7	1.39	79.8	40	39.8	266 10,537	
Tin	4.3	1.39	6	0	6	3,265 19,597	
Machinery		1.39				220,000	
Chemical Pulp for Paper	(English tons) 261.9	1.39	(1,000 English tons) 364			88,000	
Mechanical Pulp for Paper	99.6	1.39	138.4	timber (1,000 koku) 11,000		8 88,000	
Pulp for Rayon		1.39	27.5				
Wood		1.35	(1,000 koku) 82,810	(7) 70,000	12,810	8 102,480	
Crude Rubber	(metric tons) 49.5	1.39	(1,000 metric tons) 68.8	(1,000 metric tons) 0	68.8	1,364 94,187	
Leather & Hide	36.3	1.39	50.5	10	40.5	1,004 40,602	
Dyes & Pigments		1.39				33,229	
Chemicals		1.39				111,254	
Fertilizers		1.26				155,289	
Kerosene, etc.	(1,000 kilolitres) 2,636.9	1.35	(1,000 kilolitres) 3,560	(1,000 kilolitres) 324	3,236	46 148,856	
Others		1.35				407,155	
Total						1,726,206	

(Note) (1) The multiplication factor as of 1953 is 1.39 in the case of production materials; 1.26 in the case of materials considered to be for consumption; and 1.35 in the case of materials which are midway between the two, on the assumption that 70% of them is used for production and 30% for consumption.

(2) Steel is assumed to be produced entirely within the country.

(3) Estimated figures for machinery, dyes and pigments, chemicals, fertilizers and others are worked out through multiplying the 1930-31 average import value by the respective multiplication factor.

(71)

0267

Table No. 25 Estimated Amount of Exportation of Products from Domestic Raw Materials in 1953 (in the 1939 value)

Item	Unit	Average Ex- portation through 1935-39	Adjustment- by the Ex- portation Plan for 1952 of E.S.B.	Value in Money (in 1,000 yen)	Percentage
Agricultural Products				30,239	7.1%
Oranges	100kin	650,000		5,200	
Apples	"	65,000		845	
Pears	"	43,000		516	
Loquats	"	57,000		741	
Chestnuts	"	4,000		104	
Tea	"	300,000		1,800	
Lily-bulbs	1,000pieces	35,000	6,600	528	
Seeds	100kin	8,000		480	
Dried Shiitake	"	13,000	15,000	3,825	
Aquatic Products				25,740	6.0%
Dried Oyster	100kin	4,000		260	
Agar-agar	"	25,000	18,900	9,100	
Shark's Fins	"	9,000		675	
Dried Cuttlefish	"	45,000		4,185	
Dried Abalone	"	4,000		1,220	
Dried Beche-de-mer	"	20,000		4,500	
Fish meal, liver	"	40,000		5,800	
Furs				2,070	0.5%
Rabbit	100kin	450,000		900	
Squirrel	"	5,000		120	
Badger	"				
Fox	"				
Sable	"	30,000		1,050	
Wiesel	"				
Fats & Oils, Wax				12,193.5	2.8%
Peppermint Oil	100kin	5,500		2,568.5	
Whale Oil	"	25,000		500	
Shark Oil	"	75,000		1,275	
Vegetable Wax	"	50,000		2,450	
Hardened Fish Oil	"	450,000		5,400	
Medicines & Chemicals				29,296	6.9%
Pyrethrum	100kin	100,000		11,200	
Acetic Acid	"	35,000		875	
Sulphuric Acid	"	100,000		500	
Sulphate of Copper	"	7,000		182	
Nitric Acid	"	25,000		375	
Yellow Prussiate of Potash	1,000			54	
Heliotropin	100kin	15,000		60	
Artificial Spices	"	175,000		525	
Formic Acid	"	6,500		2,275	
Arsenious Acid	"	20,000		180	

(Continued on Page 75)

(73)

0268

Table No. 25 (Continued from Page 73)

Oxalic Acid	100 kin	1,500		78	
Lead Arsenate	"	15,000		450	
Alum	"	80,000		560	
Lime Arsenate	"	14,000		224	
Menthol	"	500,000	120,000	1,446	
Mint Ball	"	160,000		160	
Ammonium Sulphate	1,000tin	100,000	203,160	10,158	
Dyes				2,362	0.5%
Sulphate Dyes	100kin	8,000		360	
Direct Dyes	"	1,800		252	
Coal-Tar Pitch	"	250,000		1,000	
Varnish	"	15,000		750	
Textiles				224,350	53.1%
Silk Fabrics					
1,000 square yards	100,000			80,000	
Ribbon Lace	100kin	8,000		1,600	
Handkerchiefs	"	23,000		3,450	
Socks & Stockings	"	2,000		2,400	
Shawls	"	10,000		5,600	
Raw Silk	"	480,000	100,000	131,300	
Mining Products & Manufactures thereof				23,164	5.4%
Coal	1,000tons	9,000	1,250	17,500	
Cement	1,000kin	1,000,000	566,780	5,064	
Porcelain				29,687	7.0%
Table Utensils & Tea Sets					
1,000dozens	110,000			22,776	
Vases	"	1,000		155	
Smoking Sets	1,000sets	6,000		4,800	
Others	1,000kin	3,000		1,962	
Glass & Manufactures thereof				31,790	7.5%
Window-Panes	1,000square feet	23,000		7,840	
Plate Glass	"	3,000		270	
Table Utensils	1,000 dozens	1,600		1,600	
Table Glasses	"	7,000		4,200	
Bottles	"	27,000		11,880	
Mirrors	1,000 pieces	70,000		4,200	
Eye-glasses	"	20,000		1,800	
Sundry Goods				11,547.3	2.7%
Japanese Paper	100kin	28,000		3,024	
Bamboo	1,000kin	30,000		1,050	
Sponge-gourd	100kin	4,500		742.5	
Straw plait	1,000kin	3,000	6,600	3,517.8	
Fountain-Pens	1,000pieces	10,000	12,000	2,844	
Fans	"	13,000		369	
Total				422,438.8	100.0%

(Note) (1) The amount of exportation in 1953 is, as a matter of principle, based on the average amount of exportation through 1935-39; when it is considered inappropriate, the estimated amount of exportation in 1952 by the Economic Stabilisation Board is adopted.

(2) Prices are computed on the basis of the 1939 export prices.

(3) 1 kin is about 0.6 kilogram.

(75)

0269

Table No. 26

Amount of Exportation of Products from Imported Raw Materials in 1939 and Estimated Amount of Importation of such Raw Materials
(in the 1939 value)(in 1,000 yen)

Item	Exportation	Its Percentage	Estimated Percentage of Importation of Necessary Raw Materials	Estimated Amount of Importation of Raw Materials	Raw Materials required to be imported
Cotton Goods	577,928	25.6	55	317,860	Raw Cotton; Salt; Tannin Materials; Paraffin; Soap; etc.
Woolen Goods	98,179	4.4	60	58,907	Wool; Salt; Hydrosulphite; Soap
Rayon Goods	177,469	7.9	15	26,620	Rayon Pulp; Cotton Linter; Salt; Illuminite; Tannin Materials; Soap; Glue; etc.
Staple Fiber Goods	63,876	2.8	15	9,581	Rayon Pulp; Salt; Tannin Materials; etc.
Hemp Goods	27,706	1.2	20	5,541	Manila Hemp; Hemp Fiber; Cerophane; Salt; Sulphite Pulp; Paraffin
Machinery & Tools	360,453	16.0	10	36,045	Silicon Steel; Lead; Tin; Crude Rubber; Mica; Heavy Oil; Nickel; Paraffin; Casein; Glue; Lacquer; Machine Oil; etc.

(Continued on Page 79)

(77)

0270

Table No. 26 (Continued from Page 77)

Metal Goods	161,334	7.2	20	32,267	Bauxite; Iron Ore; Coal; Pitch Coke; Antimony; Cobalt Oxide; Borax; Salt; etc.
Fats, Oils, & Manufactures	39,860	1.8	70	27,902	Copra; Cotton-seeds; Animal Fats; Salt; Silica; etc.
Chemicals & Medicines	68,775	3.0	30	20,633	Salt; Benzol; Crude Tartar; Aceton; Citric Acid; Liquorice; Gambier; etc.
Dyes & Paints	10,755	0.5	50	5,378	Linseed-oil; Benzol
Paper & Paper Goods	122,207	5.4	50	61,104	Wood, Salt, Manila hemp; Casein
Rubber Goods	36,050	1.6	20	7,210	Crude Rubber; Gasoline; Carbon-black; Latex; Paraffin; Benzol; etc.
Leather, Hide & Manufactures	6,510	0.3	80	5,208	Hides, Tannin Materials; Dyes
Sundry Goods	505,220	22.4	30	151,566	
Total	2,256,322	100.0	34	765,822	

(Note)

Sundry goods include all products from imported raw materials which are not specified, e.g. plywoods, small electric bulbs, celluloid goods, buttons, pencils, ivory, matches, brushes, coral goods, toys, refined sugar, candies, beer, etc.

0271

(79)

Table No. 27

Exportation of Products from Imported Raw Materials and
Importation of Raw Materials Necessary therefor in 1953
(in the 1939 value) (in million yen)

Item	Exporta- tion in 1952 ac- cording to E. S. B. Plan	Percen- tage	Adjusted Percen- tage	Exporta- tion in 1953 ac- cording to Adjusted Percentage	Percen- tage of Importa- tion of Raw Ma- terials required in 1953	Imports Raw Ma- terials required in 1953	Highest Amount of Expor- tation in the Past	Year
Cotton Goods	969.6	35.2	33.0	1,332	55	733	1,024	1937
Woolen Goods	175.3	6.4	6.4	258	60	155	126	"
Rayon Goods	342.0	12.4	10.0	404	15	61	278	"
Staple Fiber Goods	85.2	3.1	2.0	81	15	12	64	1939
Hemp Goods	45.1	1.6	1.0	40	20	8	28	"
Machinery & Tools	667.5	24.2	26.5	1,070	10	107	459	1940
Metal Goods	33.2	1.2	4.0	161	20	32	253	1939
Fats, Oils & Products thereof	74.6	2.7	2.0	81	70	57	68	1936
Chemicals & Medicines	118.4	4.3	5.0	202	30	61	69	1939
Dyes & Paints	10.0	0.5	0.5	20	50	10	14	1935
Paper & Paper Goods	91.4	3.3	2.5	101	50	50	122	1939
Rubber Goods	39.4	1.4	2.4	97	20	19	60	1936
Leather, Hide & Products thereof	10.0	0.5	0.6	24	80	19	35	1935
Sundry Goods	88.8	3.2	4.1	165	30	50		
Total	2,751.6	100.0	100.0	4,036		1,374		

(Note) "Sundry Goods" include celluloid goods, toys, electric bulb, brushes, refined mineral oil,
refined sugar, flour, plywoods, buttons, and others.

0272

Table No. 28

Imports in 1930-39
(in 1,000 yen)

Year	Amount	Value in terms of the 1939 Price
1930	1,542,070	2,904,090
1931	1,231,740	2,767,960
1932	1,427,460	2,734,600
1933	1,912,130	2,955,380
1934	2,277,110	3,481,820
(Average through 1930-34)	(1,678,100)	(2,711,810)
1935	2,465,600	3,658,500
1936	2,753,300	3,955,900
1937	3,785,200	4,098,800
1938	2,663,300	2,671,300
1939	2,917,700	2,917,700

Table No. 29

Exports in 1930-39
(in 1,000 yen)

Year	Amount	Value in terms of the 1939 Price
1930	1,434,640	2,482,090
1931	1,121,580	2,331,770
1932	1,365,810	2,577,000
1933	1,832,320	2,885,540
1934	2,139,190	3,352,960
(Average through 1930-34)	(1,578,710)	(2,551,195)
1935	2,460,300	3,820,400
1936	2,641,500	3,948,400
1937	3,131,500	4,077,500
1938	2,678,500	3,223,200
1939	3,564,300	3,564,300

0273

Table No 30

Ordinary Non-Trade Account for 1936
(in million yen) (- indicates excess of payment)
(By The Ministry of Finance)

	Receipt	1939 Value	Payment	1939 Value	Balance	1939 Value
Interests & Dividends	34.4	48.2	121.1	169.5	-86.7	-121.3
Profits from Overseas Enterprises & Services	212.4	297.4	15.3	21.4	197.1	276.0
Marine Transportation Account	334.6	468.4	140.8	197.1	193.8	271.3
Insurance Account	137.5	192.5	122.0	170.8	15.5	21.7
Foreigners' Consumption in Japan & Japanese Consumption abroad	107.7	150.8	70.5	98.7	37.2	52.1
Overseas Receipt & Payment of Government	34.9	48.9	164.5	230.3	-129.6	-181.4
Others	26.6	37.2	21.0	29.4	5.6	7.8
Total	888.1	1,243.3	655.2	917.3	232.9	326.0

Table No. 31

1930-40 Output of Each Branch of the Manufacturing Industry
(Factories employing 5 or more workers.) (By the Ministry of Commerce and Industry)

	Textile Industry	Metal Industry	Machinery & Tool Industry	Ceramic Industry	Chemical Industry	Sawmill & Woodwork	Printing & Bookbinding	Food Industry	Other Industries	Gas & Electricity	Total
1930	2,027,940 (34.3)	526,454 (9.0)	615,683 (10.6)	158,947 (2.7)	924,018 (15.9)	157,550 (2.7)	182,640 (3.1)	949,929 (16.3)	195,977 (3.3)	100,621 (1.7)	5,839,259 (100)
1931	1,802,997 (35.6)	434,870 (8.6)	443,341 (8.6)	142,316 (2.8)	825,520 (16.3)	146,907 (2.9)	167,310 (3.3)	834,687 (16.5)	187,515 (3.7)	75,895 (1.5)	5,061,358 (100)
1932	2,028,170 (35.0)	591,128 (10.2)	543,842 (9.4)	159,547 (2.7)	952,022 (18.5)	152,557 (2.6)	167,709 (2.9)	886,272 (15.3)	232,917 (4.0)	82,141 (1.4)	5,801,305 (100)
1933	2,696,080 (35.3)	887,728 (11.6)	805,115 (10.5)	212,454 (2.8)	1,300,336 (17.0)	183,360 (2.4)	169,551 (2.2)	1,017,581 (13.3)	282,142 (3.7)	85,623 (1.2)	7,639,970 (100)
1934	2,917,633 (31.9)	1,463,618 (16.0)	1,082,073 (11.8)	250,859 (2.7)	1,514,886 (16.6)	218,724 (2.4)	192,742 (2.1)	1,040,682 (11.4)	337,282 (3.7)	118,653 (1.4)	9,137,152 (100)
1930-34 Average	2,294,564 (34.4)	780,760 (11.6)	698,011 (10.4)	184,827 (2.8)	1,104,356 (16.3)	171,820 (2.6)	175,990 (2.7)	945,830 (14.1)	247,167 (3.7)	92,587 (1.4)	6,695,912 (100)
1935	3,078,082 (27.8)	1,817,097 (16.4)	1,380,583 (12.5)	282,743 (2.6)	1,877,578 (17.0)	240,617 (2.2)	210,664 (1.9)	1,159,492 (10.5)	379,530 (3.4)	632,863 (5.7)	11,059,251 (100)
1936	3,654,888 (28.2)	2,208,867 (17.1)	1,711,352 (13.3)	329,316 (2.5)	2,110,915 (16.3)	280,237 (2.2)	234,988 (1.8)	1,259,660 (9.7)	440,662 (3.4)	704,599 (5.5)	12,940,484 (100)
1937	4,242,258 (24.8)	3,488,037 (20.4)	2,557,202 (14.9)	406,288 (2.4)	2,917,030 (17.0)	379,474 (2.2)	273,254 (1.6)	1,524,940 (6.9)	596,555 (3.5)	725,428 (4.2)	17,109,467 (100)
1938	3,656,819 (18.4)	4,463,368 (22.5)	3,588,650 (18.1)	420,651 (2.1)	3,657,419 (18.5)	449,733 (2.3)	264,836 (1.3)	1,752,659 (8.9)	689,293 (3.5)	857,517 (4.2)	19,800,941 (100)
1939	4,426,490 (17.7)	5,226,795 (20.9)	5,184,553 (20.7)	591,754 (2.4)	4,593,074 (18.4)	719,551 (2.9)	330,868 (1.3)	2,294,097 (9.2)	552,092 (2.2)	1,069,815 (4.3)	24,989,089 (100)
1940	4,198,146 (16.6)	5,124,342 (18.9)	6,188,443 (22.8)	694,873 (2.6)	5,046,849 (18.6)	989,132 (3.6)	323,341 (1.2)	2,429,779 (9.0)	605,455 (2.2)	1,231,389 (4.5)	27,131,749 (100)

0274

0275

Table No. 32

Amounts in Money and Percentages of Exports made from
Imported Raw Materials in 1935, 1937, 1939 and 1953
(in the 1939 Price) (in 1,000 yen)

	1935		1937		1939		Estimate for 1953	
	Amount	%	Amount	%	Amount	%	Amount	%
Cotton Goods	1,021,442	41.5	1,024,151	36.3	577,928	25.5	1,332,000	33.0
Woollen Goods	89,686	3.6	126,182	4.5	98,179	4.4	258,000	6.4
Rayon Goods	240,531	9.8	278,170	9.9	177,469	7.9	404,000	10.0
Staple Fiber Goods	—	—	28,967	1.0	63,876	2.8	81,000	2.0
Hemp Goods	17,092	0.6	13,893	0.5	27,706	1.2	40,000	1.0
Machinery & Tools	204,189	8.3	280,211	9.9	360,453	16.0	1,070,000	26.5
Metal Goods	239,188	9.7	157,247	5.6	161,334	7.2	161,000	4.0
Fats, Oils & Products thereof	64,144	2.6	49,184	1.7	39,860	1.8	81,000	2.0
Chemical Products	53,766	2.2	45,568	1.6	68,775	3.0	202,000	5.0
Dyes & Paints	14,127	0.6	10,518	0.4	10,755	0.5	20,000	0.5
Paper & Paper Goods	60,719	2.5	82,567	2.9	122,207	5.4	101,000	2.5
Rubber Goods	38,299	1.6	65,736	2.3	36,050	1.6	97,000	2.4
Hide, Leather & Products thereof	35,228	1.4	12,697	0.5	6,510	0.3	24,000	0.6
Sundry Goods	382,916	15.6	644,444	22.9	505,220	22.4	165,000	4.1
Total	2,461,327	100.0	2,819,535	100.0	2,256,322	100.0	4,036,000	100.0
Total of Exportation	3,835,837		4,089,900		3,526,323		4,458,439	

0276

Table No. 33

Percentage of the Net Production of Each Branch of the
Manufacturing Industry to its Total Output in 1930-34
(Factories employing 5 or more workers) (By the Ministry
of Commerce and Industry) (in million yen)

		1930	1931	1932	1933	1934	Average
		Net Production	Net Production	Net Production	Net Production	Net Production	Net Production
Textile Industry	Total Output	2,027.9	1,803.0	2,028.2	2,696.1	2,917.6	
	Net Production	398.8	423.5	503.1	523.4	463.9	
	%	19.7	23.5	24.8	19.4	15.9	20.7
Metal Industry	Total Output	526.5	434.9	591.1	887.7	1,463.6	
	Net Production	194.2	50.2	199.6	295.9	467.5	
	%	36.9	11.5	33.8	33.3	31.9	29.5
Machinery & Tool Industry	Total Output	615.7	443.3	543.8	805.1	1,082.1	
	Net Production	289.4	254.7	302.0	422.7	578.0	
	%	47.0	57.5	55.5	52.5	53.5	53.2
Ceramic Industry	Total Output	158.9	142.3	169.5	212.5	260.9	
	Net Production	75.3	67.3	100.1	125.2	144.4	
	%	47.4	47.3	62.8	59.0	57.6	54.8
Chemical Industry	Total Output	924.0	825.5	957.0	1,300.3	1,514.9	
	Net Production	296.7	360.1	411.3	534.2	597.5	
	%	32.1	43.6	43.3	41.1	39.4	39.9
Sawmill & Woodwork Industry	Total Output	157.6	146.9	162.6	183.4	218.7	
	Net Production	35.5	41.7	43.2	29.3	56.4	
	%	22.5	28.4	28.3	16.0	25.8	24.2
Printing & Bookbinding	Total Output	182.6	167.3	167.7	169.6	192.7	
	Net Production	113.8	72.5	78.6	79.7	95.4	
	%	62.3	43.3	46.9	47.0	49.5	49.8
Food Industry	Total Output	949.9	834.7	886.3	1,017.6	1,040.7	
	Net Production	410.4	395.6	370.2	445.3	431.7	
	%	41.3	47.4	41.8	43.8	41.5	43.8
Other Industries	Total Output	196.0	187.5	232.9	282.1	337.3	
	Net Production	76.2	65.9	91.3	110.0	117.5	
	%	38.9	35.1	39.2	38.3	34.8	37.3
Gas & Electricity	Total Output	100.6	75.4	82.1	85.6	118.7	
	Net Production	66.8	44.8	54.1	69.6	94.5	
	%	66.4	59.4	65.9	81.3	80.0	70.6
Total	Total Output	5,839.3	5,060.8	5,701.2	8,430.0	9,137.2	
	Net Production	1,957.1	1,776.3	2,253.5	2,635.3	3,046.8	
	%	33.5	35.1	39.5	31.3	33.3	

Table No. 34

1930-34 Total of the Net Production of the Manufac-
turing Industry (in million yen in the 1930 price)
(Factories employing 5 or more workers) (By the
Ministry of Commerce and Industry)

Year	Net Production	Price Index	In terms of the 1930 Price
1930	1,957.1	100.0	1,957.1
1931	1,776.3	85.0	2,089.8
1932	2,253.5	88.9	2,534.9
1933	2,635.3	98.4	2,678.2
1934	3,046.8	97.8	3,115.3
Average	2,333.4		2,475.1

(Note) Price indices are according to the combined price
indices worked out by the Bank of Japan.

0277