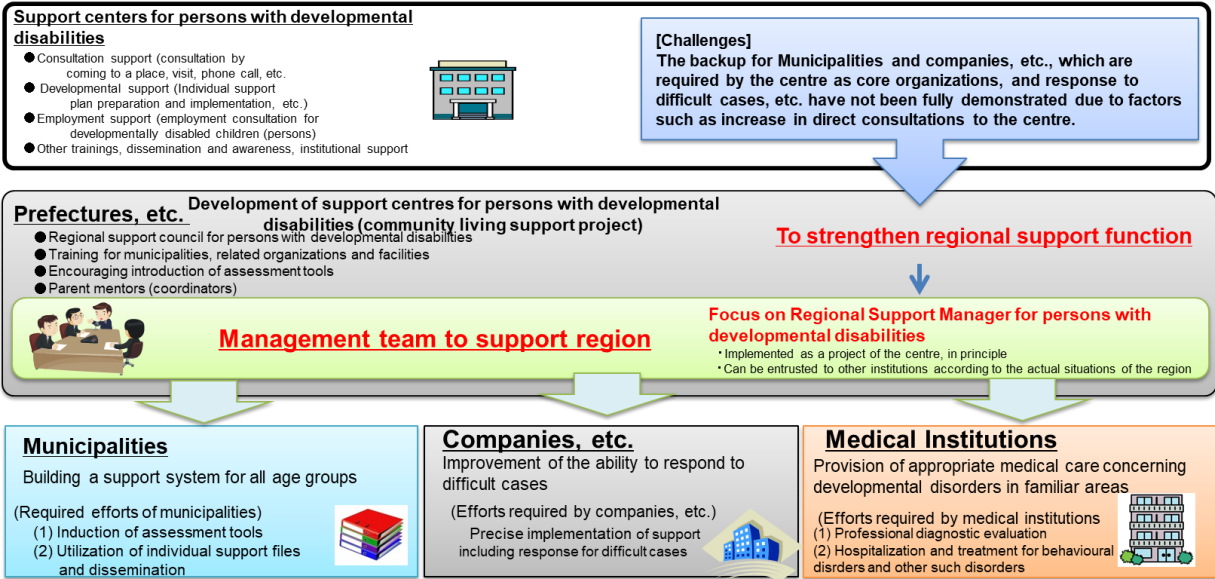


■ Fig. 2-17

**Strengthening of Regional Support Function of the Support Centres for Persons with Developmental Disabilities**

There is an urgent need for the establishment of support system in each region since the know-hows regarding support for developmental disability has not been adequately disseminated. Therefore, regarding support with municipalities, companies, etc., collaboration with medical institutions and response to difficult cases, the support system shall be developed by strengthening of the regional support function of the support centres for developmentally disabled persons, which form the core of a region.

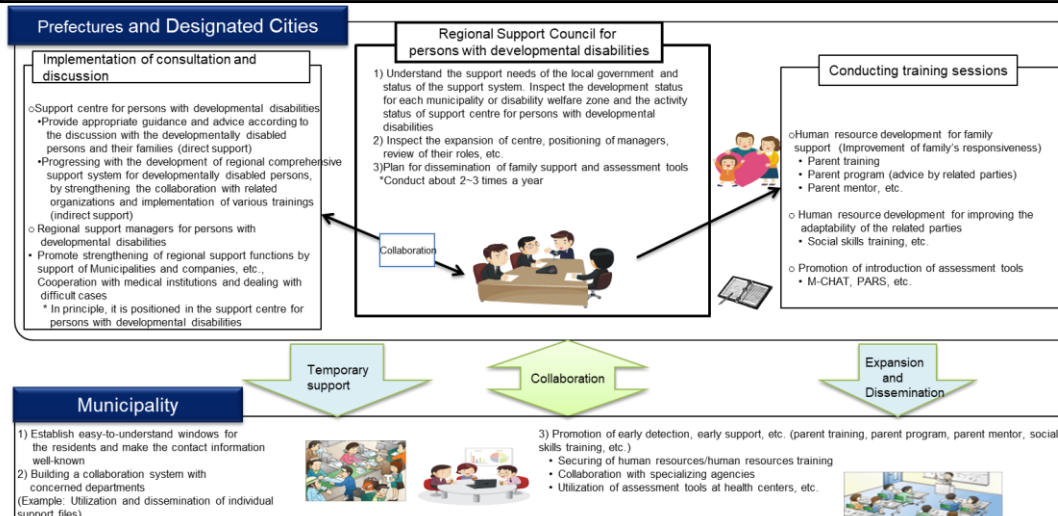


■ Fig. 2-18

**Regional Support Council for Persons with Developmental Disabilities (Image)**

○ **Organization of Regional Support Council for persons with developmental disabilities (established in Prefectures and designated cities) (Act on Support for Persons with Developmental Disabilities Article 19-2 Paragraph 1)**  
To maintain the support system for persons with developmental disabilities, Prefectures can establish Regional Support Council for persons with developmental disabilities, comprising of developmentally disabled persons and their families, academic experts and other related parties, related organizations for carrying out the duties related to medical treatment, health care, welfare, education, labour, etc., private organizations and parties engaged in the same.

○ **Function of Regional Support Council for persons with developmental disabilities (Act on Support for Persons with Developmental Disabilities, Article 19-2, Paragraph 2)**  
The Regional Support Council for persons with developmental disabilities set forth in the preceding paragraph, shall share information about the issues in a region related to the support system of persons with developmental disabilities, by means of communication among the related parties, aim for a closer communication of the related parties and discuss the development of the system according to the actual circumstances of the region.



■ Fig. 2-19

Progress Status of Support Measures for Persons with Developmental Disabilities

